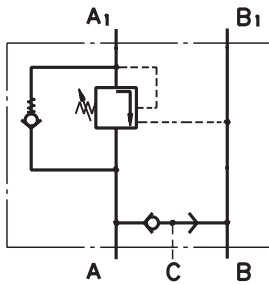


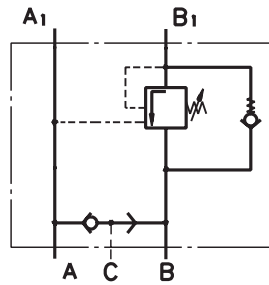
SENKBREMSVENTILE MIT BREMSENSTEUERUNG OVERCENTER VALVES WITH BRAKE CONTROL

SCHALTZEICHEN GRAPHIC SYMBOL

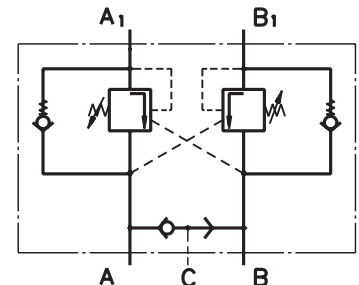
■ KPB ... AE



■ KPB ... BE



■ KPB ... D



TECHNISCHE DATEN TECHNICAL DATA

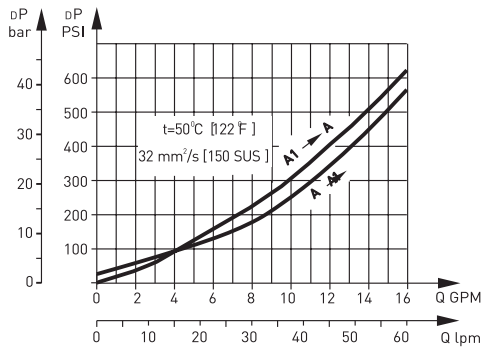
Typ Type	KPBR ... E	KPBS ... E	KPBR ... D	KPBS ... D	KPBW ... E	KPBW ... D
Für Motortyp For motor type	EPM, EPRM, EPMH	EPMS	EPM, EPRM, EPMH	EPMS	EPRM-W, HW	EPRM-W, HW
Max. Ölstrom Max. Oil flow	60 [15.85]					
Nenndruck * Rated pressure *	60 - 280 [870 - 4060]					
Aufsteuerverhältnis Pilot ratio	4,25 : 1					
Gewicht Weight	3,02 [6.658]	2,90 [6.390]	3,06 [6.746]	2,92 [6.437]	3,05 [7.724]	3,14 [6.923]

Typ Type	KPBHR ... E	KPBHR ... D	KPBT ... E	KPBT ... D	KPBV ... E	KPBV ... D
Für Motortyp For motor type	HP, HR	HP, HR	EPMT	EPMT	EPMV	EPMV
Max. Ölstrom Max. Oil flow	60 [15.85]		100 [26.40]		200 [52.80]	
Nenndruck * Rated pressure *	70 - 250 [1015 - 3625]					
Aufsteuerverhältnis Pilot ratio	4,25 : 1					
Gewicht Weight	2,30 [5.071]	2,40 [5.291]	5,40 [11.905]	5,80 [12.787]	9,20 [20.283]	9,75 [21.495]

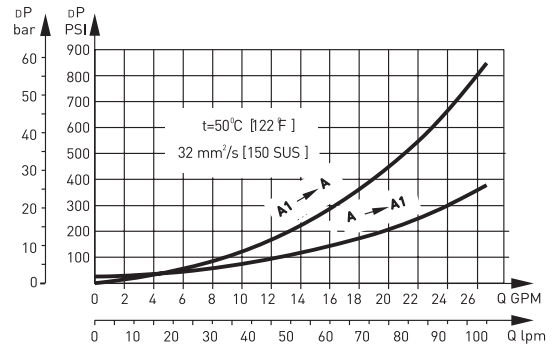
* Druckeinstellungen bei 5 l/min [1.3 GPM] und einer Viskosität von 32 mm²/s [150 SUS] bei 50 °C [122 °F]
Pressure settings are at flow rate of 5 lpm [1.3 GPM] and viscosity 32 mm²/s [150 SUS] at 50 °C [122 °F]

DRUCKVERLUST PRESSURE LOSSES

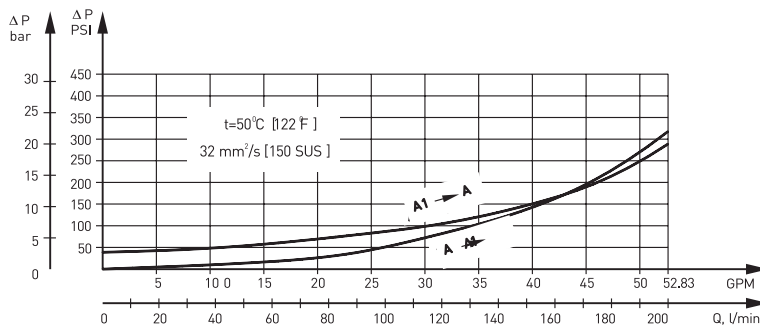
■ KPBR ..., KPBS ..., KPBW ..., KPBHR ...



■ KPBT ...



■ KPBV ...



BESTELLCODE ORDER CODE

KPB	1	-	2	/	3	/	4	5	6	7
-----	---	---	---	---	---	---	---	---	---	---

1.	Gehäusetyp Housing type
R	Ventilblock für Motorentypen EPM, EPRM und EPMH Valve block for motor types EPM, EPRM and EPMH
S	Ventilblock für Motorentyp EPMS Valve block for motor type EPMS
W	Ventilblock für Motorentypen EPRM-W und HW Valve block for motor types EPRM-W and HW
T	Ventilblock für Motorentyp EPMT Valve block for motor type EPMT
V	Ventilblock für Motorentyp EPMV Valve block for motor type EPMV
HR	Ventilblock für Motorentypen HP und HR Valve block for motor types HP and HR

2.	Druckbereich, bar [PSI] Pressure range, bar [PSI]
250	60 - 250 [870 - 3625], Standardeinstellung: 250 [3625] 60 - 250 [870 - 3625], standard setting: 250 [3625]

3.	Aufsteuerverhältnis Pilot ration
1	4,25 : 1

4.	Anzahl Ventile Number of valves
D	Zwei - Doppelwirkend Two - Double acting

E	Eins - Einfachwirkend (nur für KPBR und KPBS) One - Single acting (only for KPBR and KPBS)
AE	Eins in Leitung A - Einfachwirkend (nur für KPBW, KPBT, KPBV und KPBHR) One in line A - Single acting (only for KPBW, KPBT, KPBV and KPBHR)
BE	Eins in Leitung B - Einfachwirkend (nur für KPBW, KPBT, KPBV und KPBHR) One in line B - Single acting (only for KPBW, KPBT, KPBV and KPBHR)

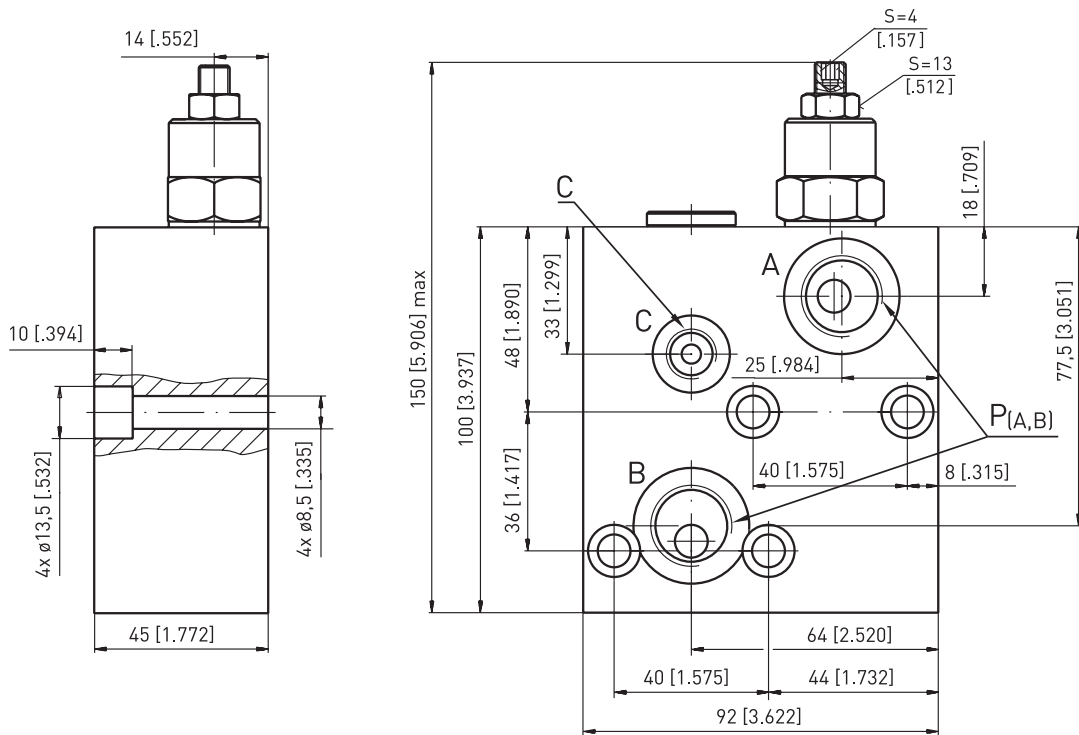
5.	Anschlüsse Ports
frei omit	BSPP (ISO295)
M	Metrisch (ISO262) Metric (ISO 262)
A	SAE (ANSI B 1.1 -1982)

6.	Lackierung Paint
P	Lackiert (Farbe auf Anfrage) Paint (colour on request)
PC	Korrosionsschutzfarbe (Farbe auf Anfrage) Corrosion protected paint (colour on request)

5.	Design Serie Design series
frei omit	Betriebsspezifisch Factory specified

EINBAUMASS DIMENSION

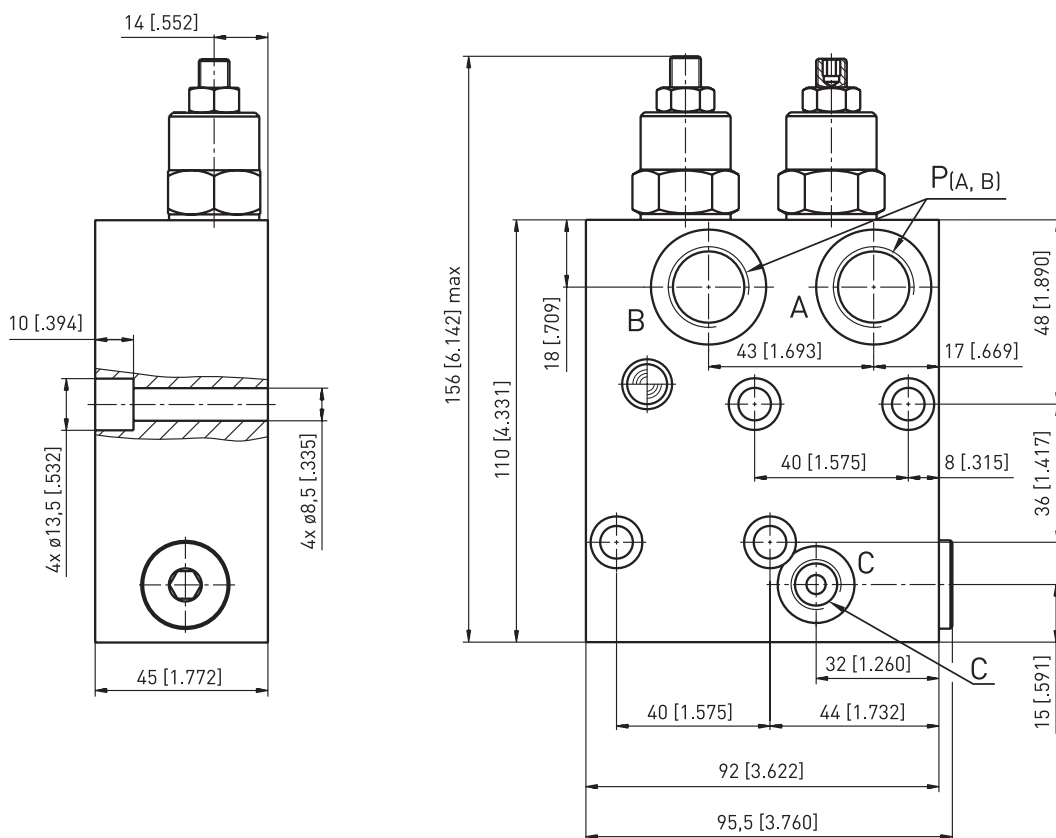
■ KPBR-250/1E ...



■ Anschlussmaß Port dimension

	Anschluss Port	
	P(A,B)	C
-	G1/2"	G1/4"
M	M22x1,5	M14x1,5
A	7/8-14 UNF	7/16-20 UNF

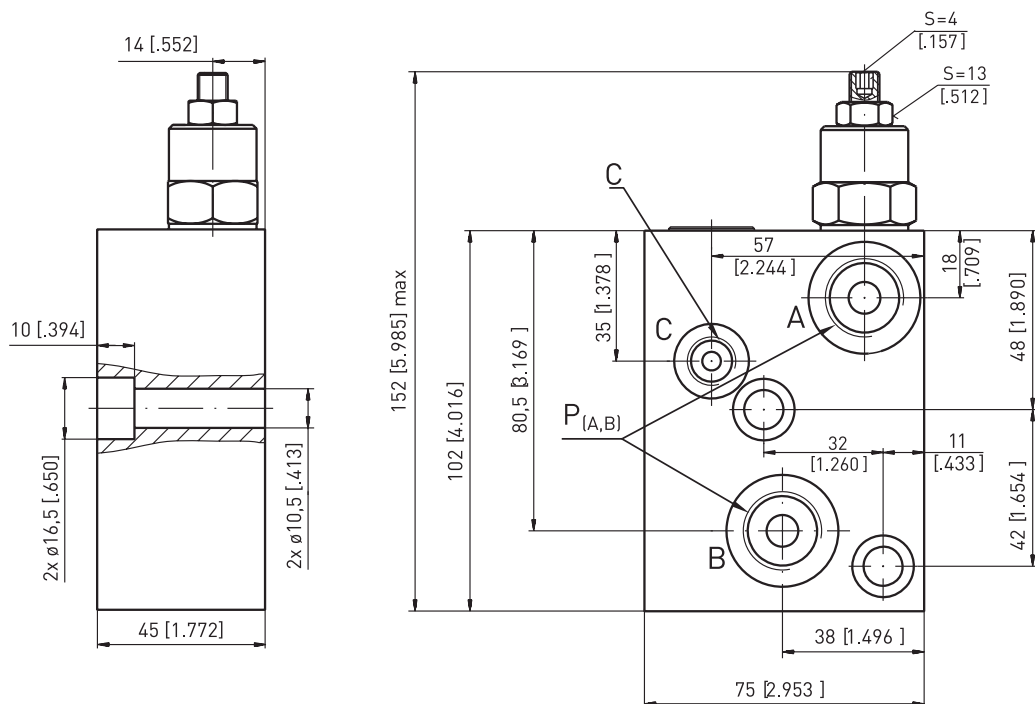
■ KPBR-250/1D ...



■ Montage Mounting

KPBR Ventile werden direkt auf den entsprechenden Motor mit vier Schrauben M8x45 - 8.8 DIN 912 bzw. 5/16-18 UNC montiert. Anzugsmoment: 20⁺⁵ Nm [177⁺⁴⁴ lb-in]
 KPBR valves are installed directly on the corresponding motor with four screws M8x45 - 8.8 DIN 912 or 5/16-18 UNC. Tightening torque: 20⁺⁵ Nm [177⁺⁴⁴ lb-in]

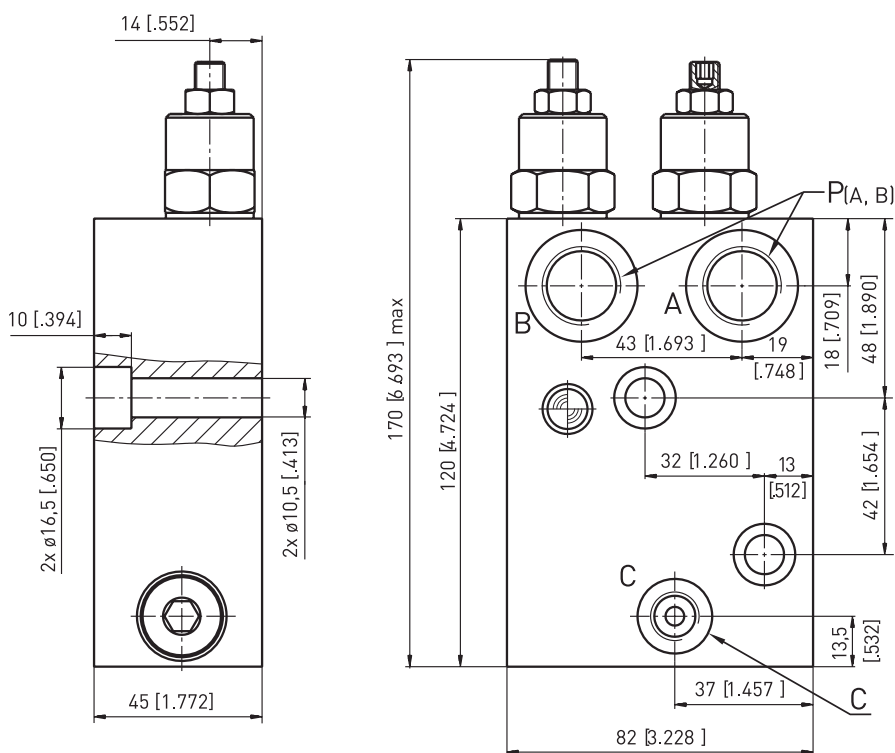
■ KPBS-250/1E ...



■ Anschlussmaß Port dimension

	Anschluss Port	
	P(A,B)	C
-	G1/2"	G1/4"
M	M22x1,5	M14x1,5
A	7/8-14 UNF	7/16-20 UNF

■ KPBS-250/1D ...

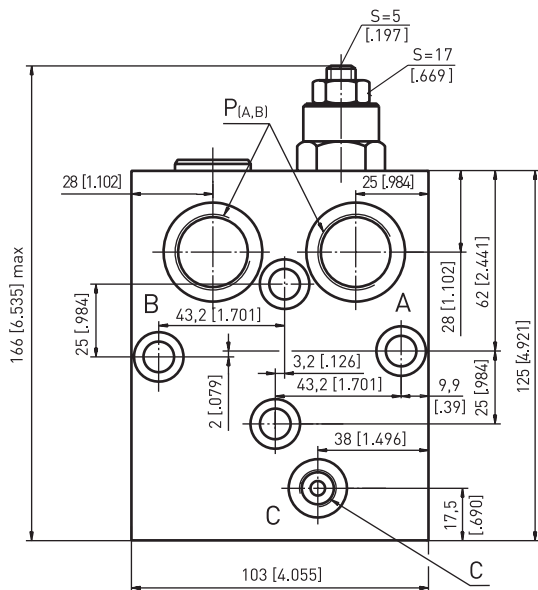


■ Montage Mounting

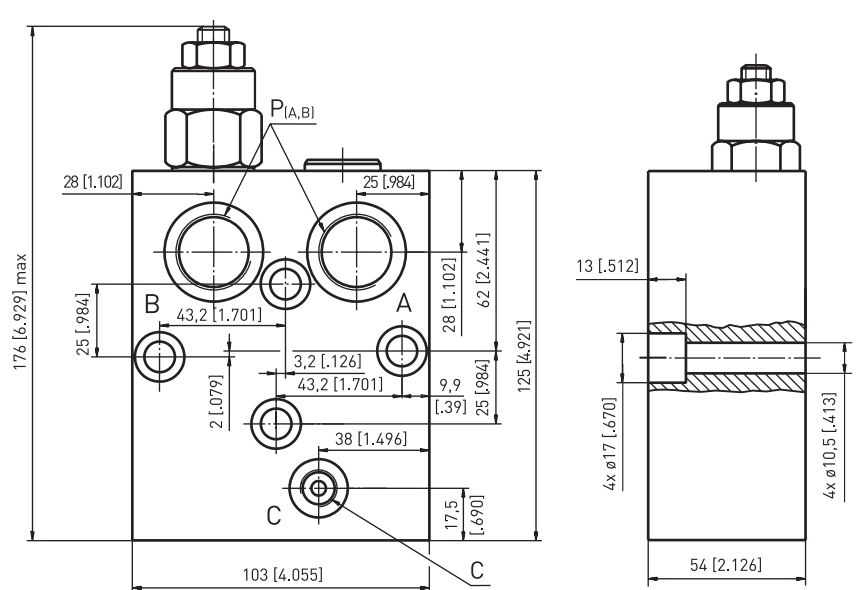
KPBS Ventile werden direkt auf den entsprechenden Motor mit zwei Schrauben M10x45 - 8.8 DIN 912 bzw. 3/8-16 UNC x 1 3/4" montiert.
Anzugsmoment: 35 Nm [310 lb-in]

KPBS valves are installed directly on the corresponding motor with two screws M10x45 - 8.8 DIN 912 or 3/8-16 UNC x 1 3/4".
Tightening torque: 35 Nm [310 lb-in]

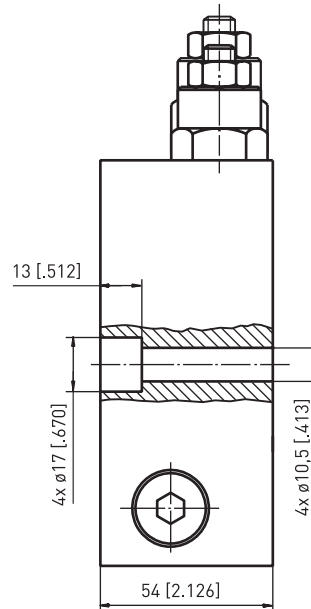
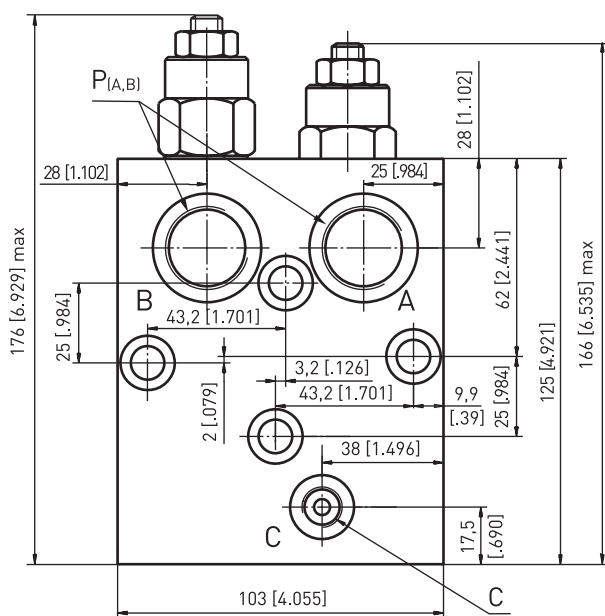
■ KPBT-250/1AE ...



■ KPBT-250/1BE ...



■ KPBT-250/1D ...



■ Montage Mounting

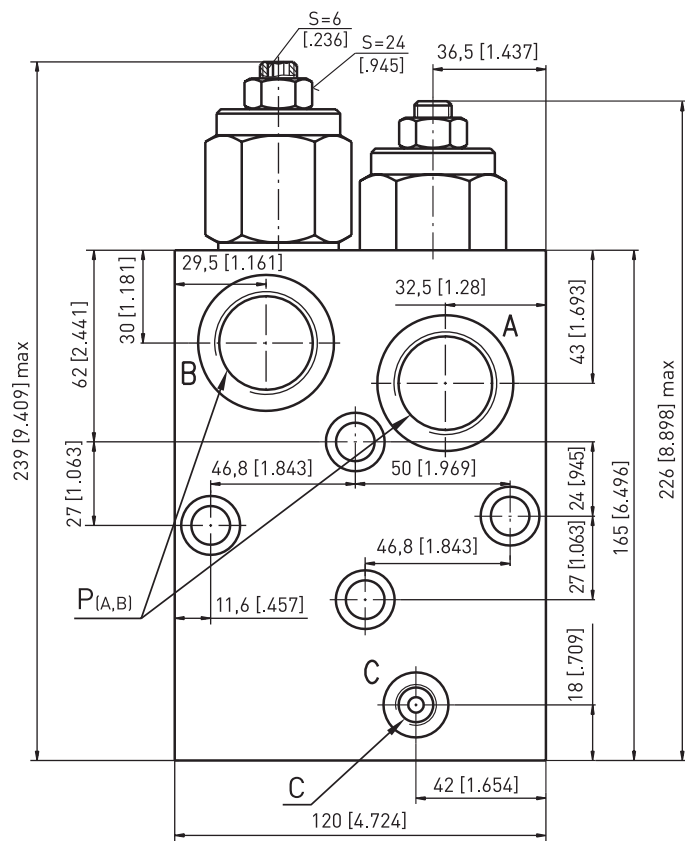
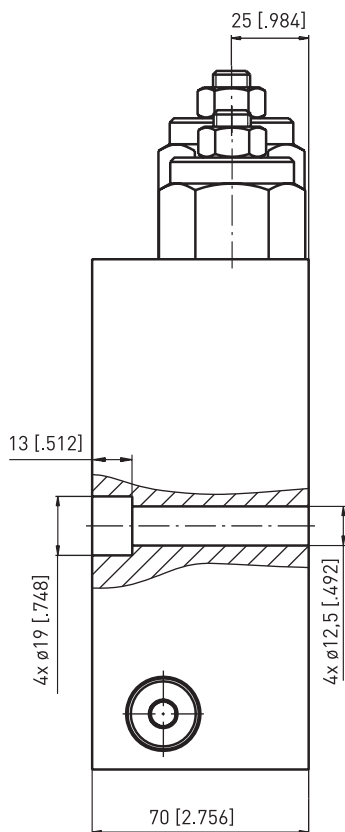
KPBT Ventile werden direkt auf den entsprechenden Motor mit vier Schrauben M10x50 - 8.8 DIN 912 montiert.
Anzugsmoment: 35 Nm [310 lb-in]

KPBT valves are installed directly on the corresponding motor with four screws M10x50 - 8.8 DIN 912.
Tightening torque: 35 Nm [310 lb-in]

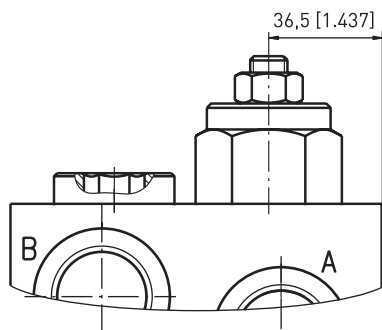
■ Anschlussmaß Port dimension

	Anschluss Port	
	P(A,B)	C
-	G3/4"	G1/4"
M	M27x2	M14x1,5
A	1 1/16-12 UN	7/16-20 UNF

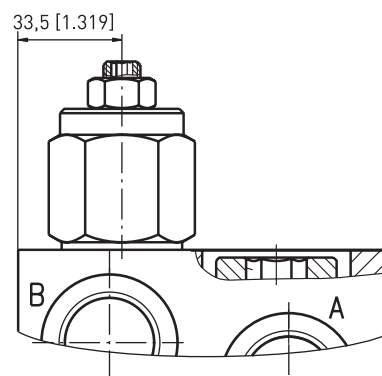
■ KPBV-250/1D ...



■ KPBV-250/1AE ...



■ KPBV-250/1BE ...



■ Montage Mounting

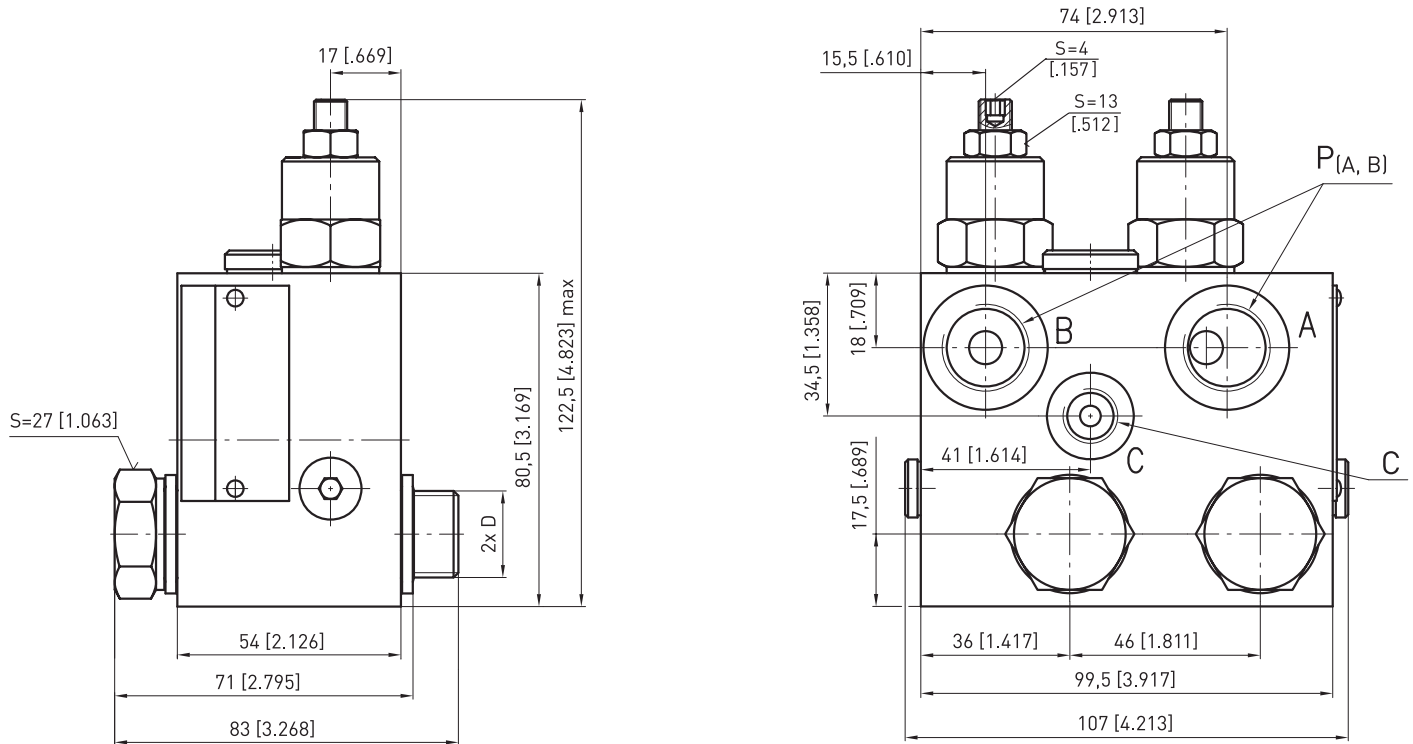
KPBV Ventile werden direkt auf den entsprechenden Motor mit vier Schrauben M12x70 - 8.8 DIN 912 montiert.
Anzugsmoment: 65 Nm [575 lb-in]

KPBV valves are installed directly on the corresponding motor with two screws M12x70 - 8.8 DIN 912.
Tightening torque: 65 Nm [575 lb-in]

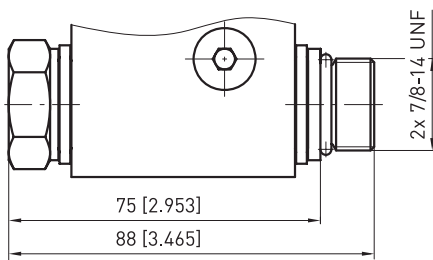
■ Anschlussmaß Port dimension

	Anschluss Port	
	P(A,B)	C
-	G1"	G1/4"
M	M33x2	M14x1,5
A	1 5/16 - 12 UN	7/16-20 UNF

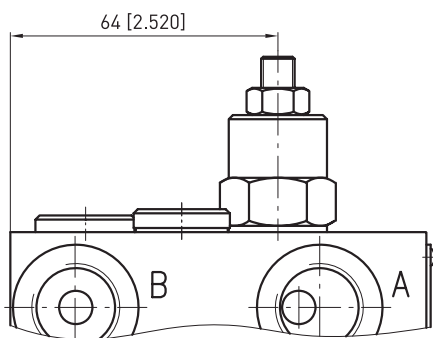
■ KPBW-250/1D ...



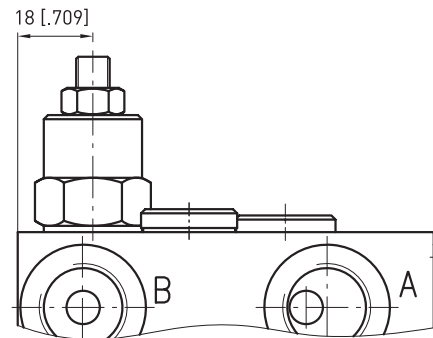
■ KPBW- ... A



■ KPBW-250/1AE ...



■ KPBW-250/1BE ...



Montage Mounting

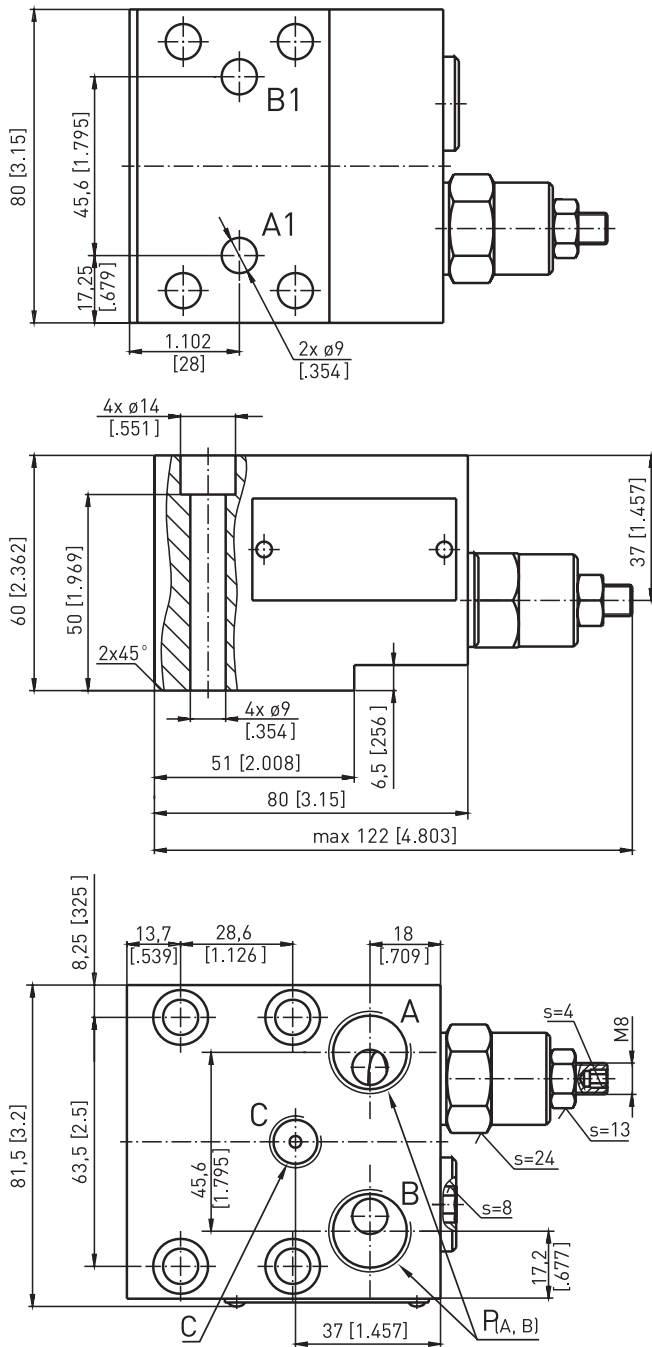
KPBV Ventile werden direkt auf den entsprechenden Motor mit zwei dem beiliegenden Schrauben (D) montiert.
Anzugsmoment: 80 Nm [710 lb-in]

KPBV valves are installed directly on the corresponding motor with two screws (D) included not.
Tightening torque: 80 Nm [710 lb-in]

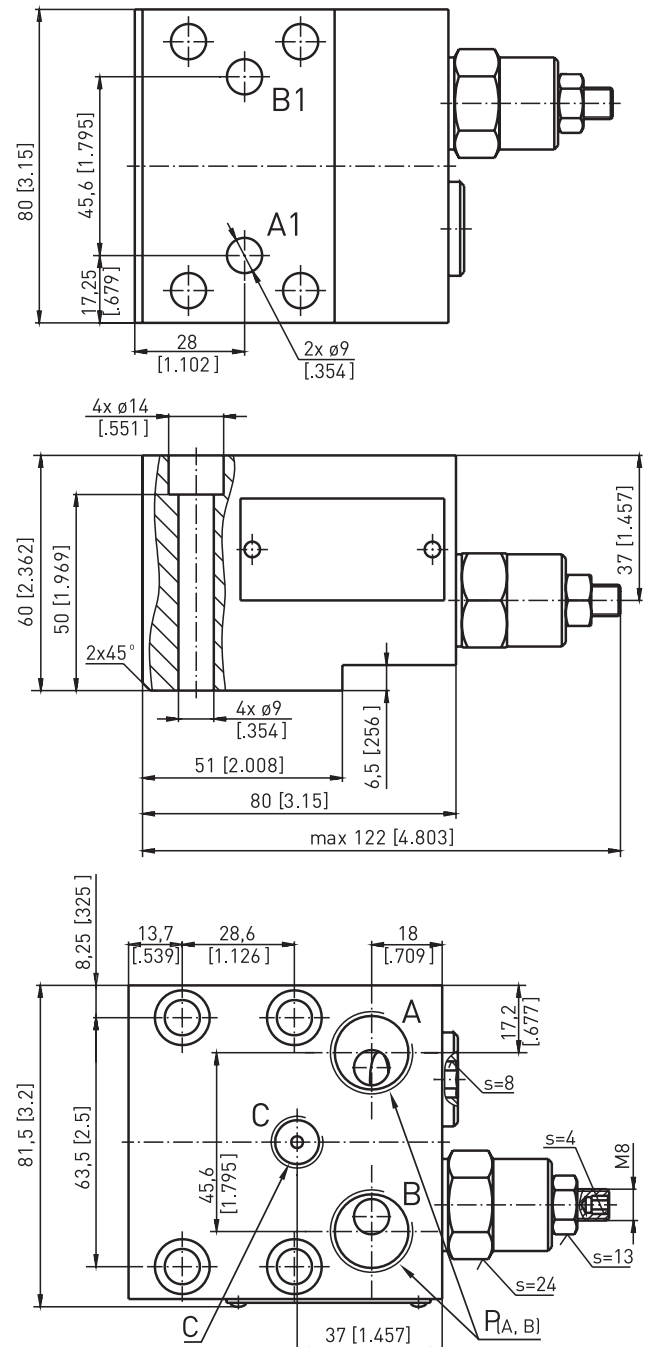
Anschlussmaß Port dimension

	Anschluss Port		
	P(A,B)	C	D
-	G1/2"	G1/4"	G1/2"
M	M22x1,5	M14x1,5	M22x1,5
A	7/18-14 UNF	7/16-20 UNF	7/18-14 UNF

■ KPBHR-250/1AE ...



■ KPBHR-250/1BE ...



Montage Mounting

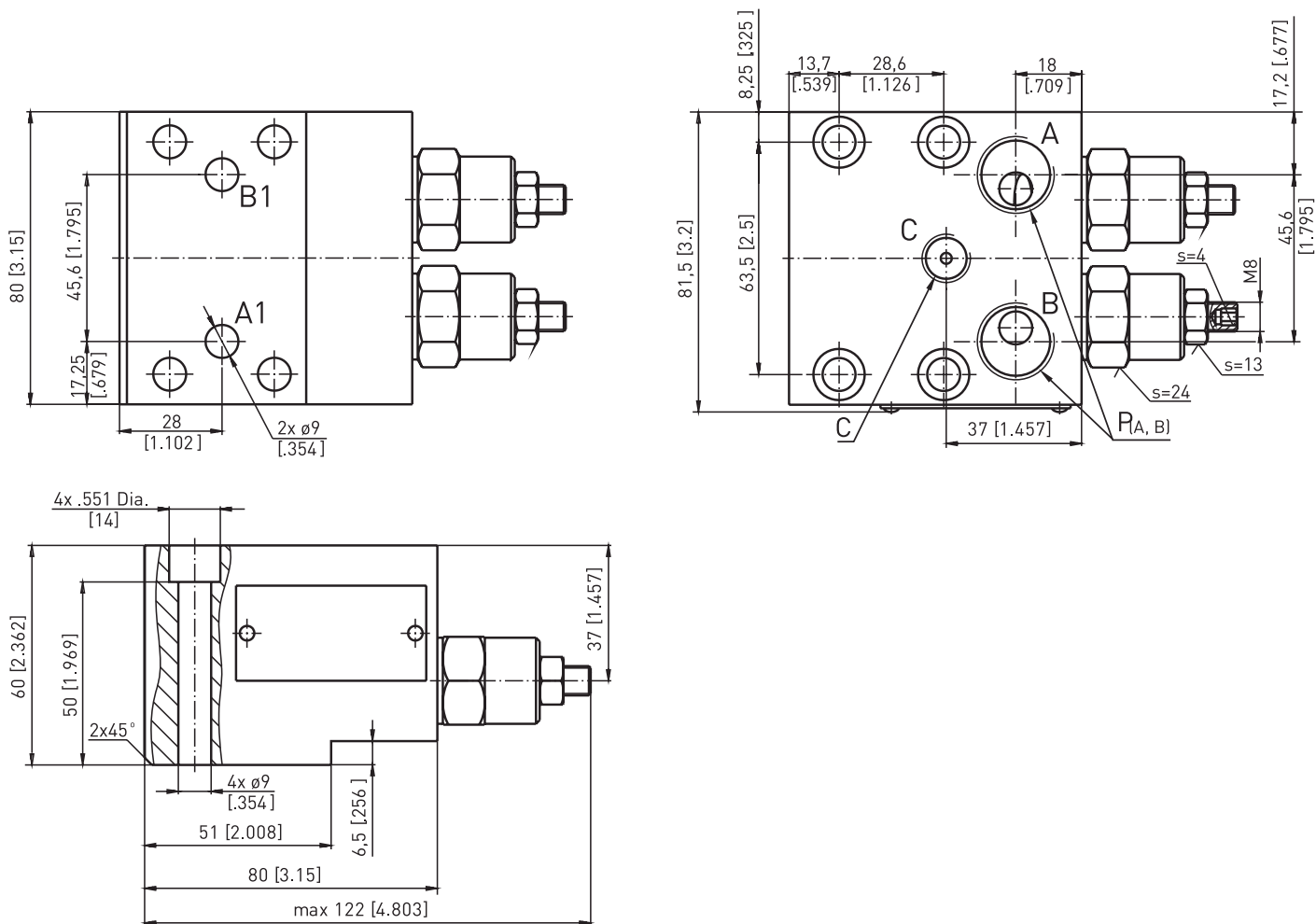
KPBHR Ventile werden direkt auf den entsprechenden Motor mit vier Schrauben M8x60 - 8.8 DIN 912 oder 5/16-18 UNC x 2 1/2" montiert. Anzugsmoment: 20⁺⁵ Nm [177⁺⁴⁴ lb-in]

KPBHR valves are installed directly on the corresponding motor with four screws M8x60 - 8.8 DIN 912 or 5/16-18 UNC x 2 1/2". Tightening torque: 20⁺⁵ Nm [177⁺⁴⁴ lb-in]

Anschlussmaß Port dimension

	Anschluss Port	
	P _(A,B)	C
-	G1/2"	G1/4"
M	M22x1,5	M14x1,5
A	7/8-14 UNF	7/16-20 UNF

■ KPBHR-250/1D ...



Montage

Mounting

KPBHR Ventile werden direkt auf den entsprechenden Motor mit vier Schrauben M8x60 - 8.8 DIN 912 oder 5/16-18 UNC x 2 1/2" montiert. Anzugsmoment: 20⁺⁵ Nm [177⁺⁴⁴ lb-in]

KPBHR valves are installed directly on the corresponding motor with four screws M8x60 - 8.8 DIN 912 or 5/16-18 UNC x 2 1/2". Tightening torque: 20⁺⁵ Nm [177⁺⁴⁴ lb-in]

Anschlussmaß

Port dimension

	Anschluss Port	
	P(A,B)	C
-	G1/2"	G1/4"
M	M22x1,5	M14x1,5
A	7/8-14 UNF	7/16-20 UNF