

HYDRAULISCHE LAMELLENBREMSE ELB 288

HYDRAULIC DISC BRAKE ELB 288

ANWENDUNG

Für EPM, EPRM und EPMS Planetenmotoren

APPLICATION

For EPM, EPRM and EPMS Orbital motors

TECHNISCHE DATEN

TECHNICAL DATA

Typ Type ELB 288 ...		7	14	21	32	43	63
Statisches Moment* Min. static torque*	daNm [lb-in]	6 - 8 [531 - 708]	13 - 15 [1150 - 1327]	20 - 22 [1770 - 1947]	31 - 34 [2743 - 3009]	41 - 45 [3628 - 3982]	61 - 64 [5399 - 5665]
Min. Entlastungsdruck Min. release pressure	bar [PSI]	4 - 5 [58 - 73]	8 - 9 [116 - 130]	12 - 13 [174 - 188]	18 - 20 [260 - 290]	24 - 26 [348 - 377]	38 - 39 [550 - 565]
Max. Öffnungsdruck Max. opening pressure	bar [PSI]	300 [4350]					
Min. Ölmenge für Bremsenlüftung Min. oil quantity for brake releasing	cm³ [in³]	7 - 8 [.427 - .488]					
Ölmenge Oil volume	cm³ [in³]	50 - 120 [3.50 - 7.35]					
Max. Druck im Leckölbereich Max. pressure in drain space	bar [PSI]	0,5 [7.25]					
Gewicht Weight	kg [lb]	9,0 [19.8]					

* Das statische Moment wird bei einem Betriebsdruck von 0 bar [0 PSI] erreicht.
Static torque is obtained at working pressure 0 bar [0 PSI].

BESTELLCODE

ORDER CODE

ELB 288	-	1	-	2	-	3	4	5
---------	---	---	---	---	---	---	---	---

1.	Eingangswelle Input shaft hole
C, CO, SH, CB, SB	

2.	Statisches Moment Static torque
7, 14, 21, 32, 43, 63	

3.	Abtriebswelle [Zul. Momentabgabe darf nicht überschritten werden] Shaft [Permissible output torque should not be exceeded]
C	Zylindrisch Ø25, Passfeder 8x7x32 DIN6885 Straight Ø25, parallel key 8x7x32 DIN6885
CO	Zylindrisch Ø1", Passfeder 1/4"x1/4"x1 1/4" BS246 Straight Ø1", parallel key 1/4"x1/4"x1 1/4" BS246
CB	Zylindrisch Ø32, Passfeder 10x8x45 DIN6885 Straight Ø32, parallel key 10x8x45 DIN6885
SH	Verzahnt Ø25,32 BS2059 [SAE 6 B] Splined Ø25,32, BS2059 [SAE 6 B]

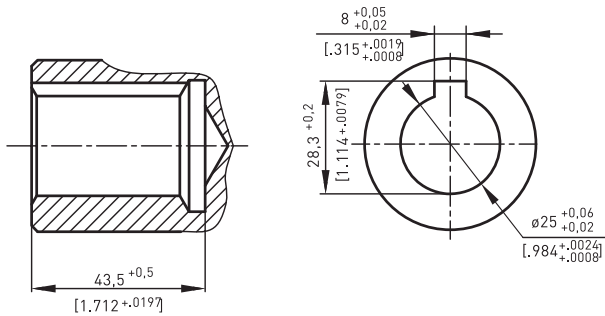
SA	Verzahnt Ø24,5 B25x22 DIN5482 Splined Ø24,5 B25x22 DIN5482
KB	Konisch 1:10, Ø35, Passfeder B6x6x20 DIN6885 Tapered 1:10, Ø35, parallel key B6x6x20 DIN6885

4.	Sonderausführungen Special features
P	Lackiert (Farbe auf Anfrage) Paint (colour on request)
PC	Korrosionsschutzfarbe (Farbe auf Anfrage) Corrosion protected paint (colour on request)

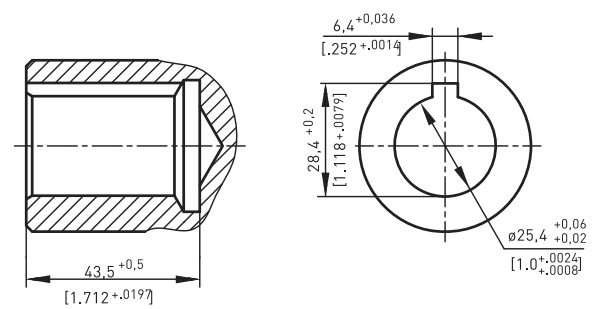
5.	Design Serie Design series
frei omit	Betriebsspezifisch Factory specified

1. EINGANGSWELLE 1. INPUT SHAFT

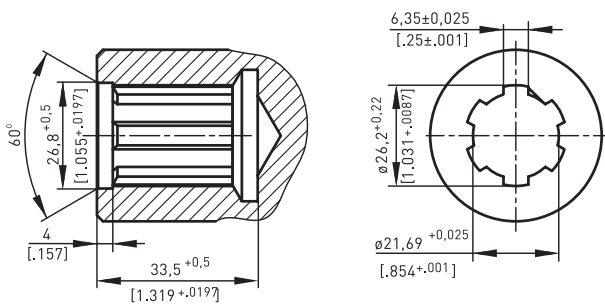
Option C



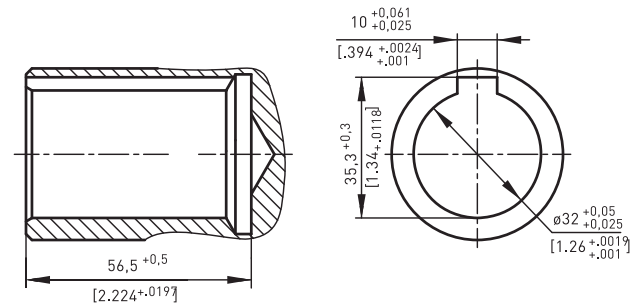
Option C0



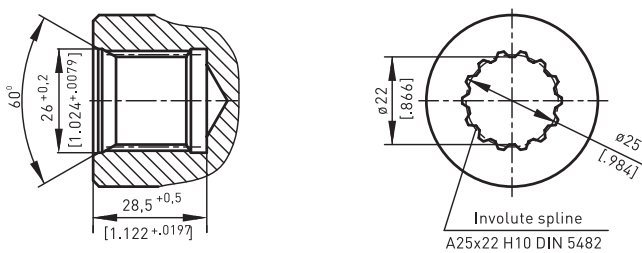
Option SH



Option CB

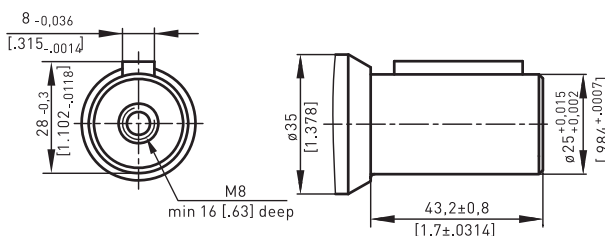


Option SB

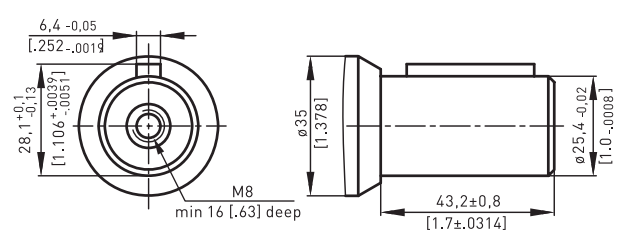


3. ABTRIEBSWELLE 3. SHAFT

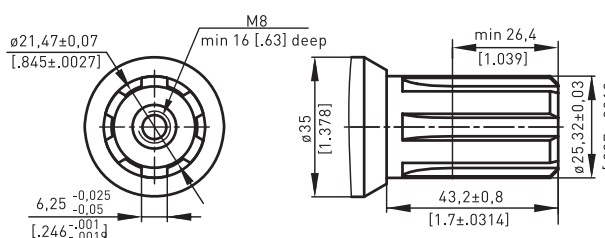
Option C: Zylindrisch $\varnothing 25$ mm Option C: Straight $\varnothing 25$ mm



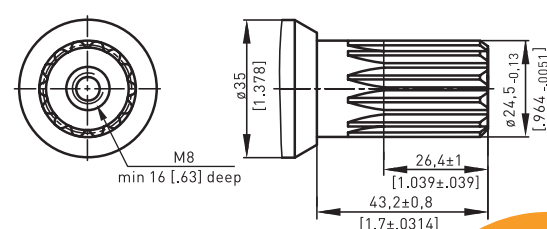
Option C0: Zylindrisch $\varnothing 1"$ Option C0: Straight $\varnothing 1"$



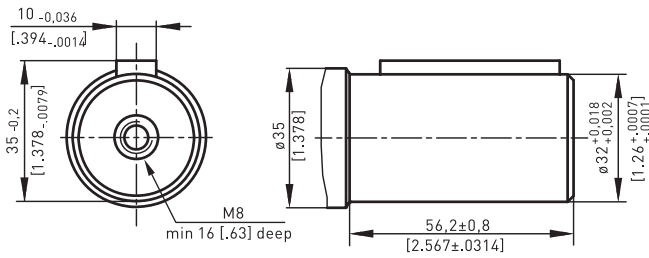
Option SH: Verzahnt SAE 6 B Option SH: Splined SAE 6 B



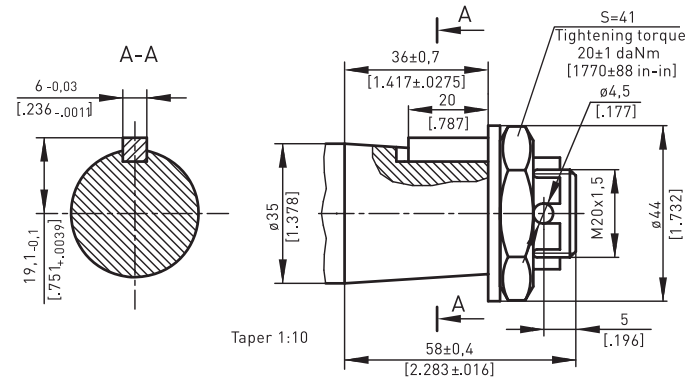
Option SA: Verzahnt B25x22h9 Option SA: Splined B25x22h9



Option CB: Zylindrisch Ø32 mm
 Option CB: Straight Ø 32 mm



Option KB: Konisch 1:10, Ø35 mm
 Option KB: Tapered 1:10, Ø35 mm

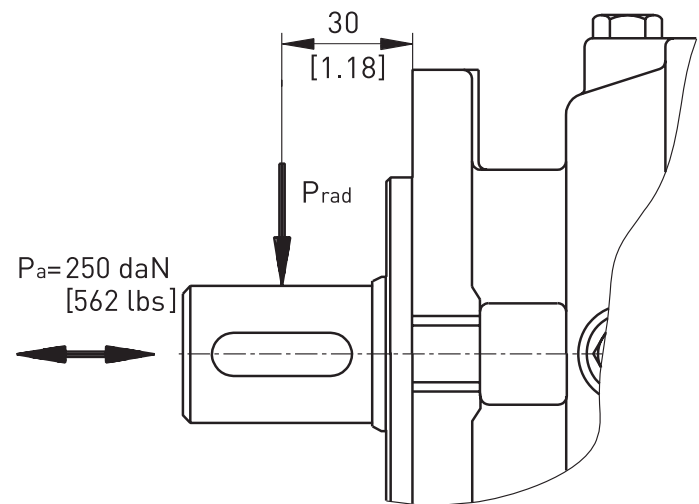
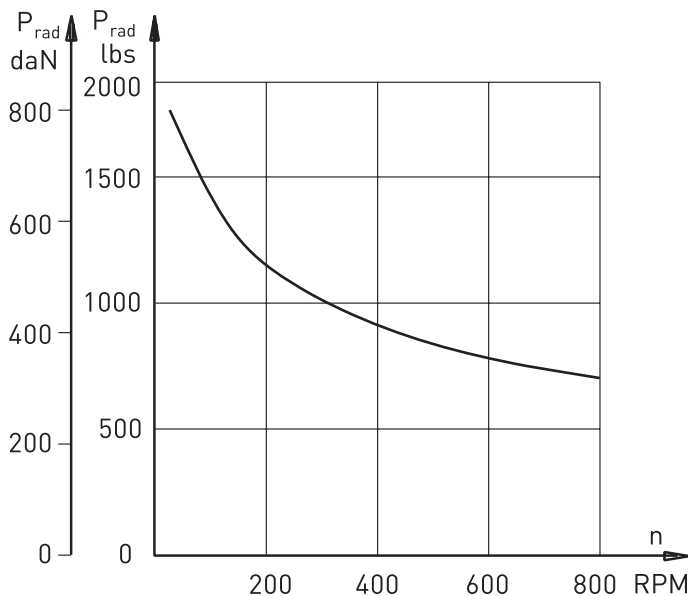


Zulässige Drehmomentabgabe
 Permissible output torque

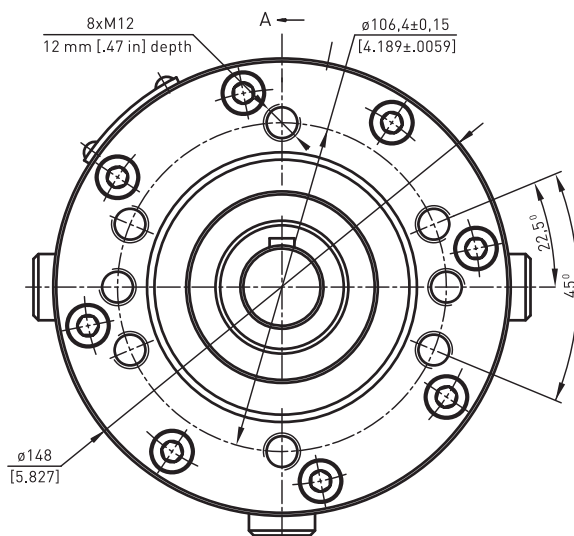
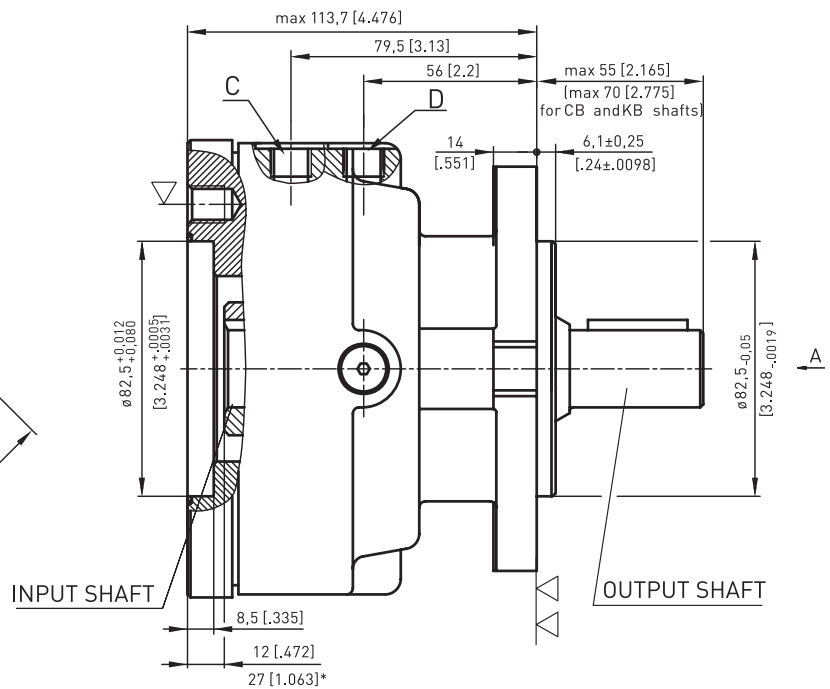
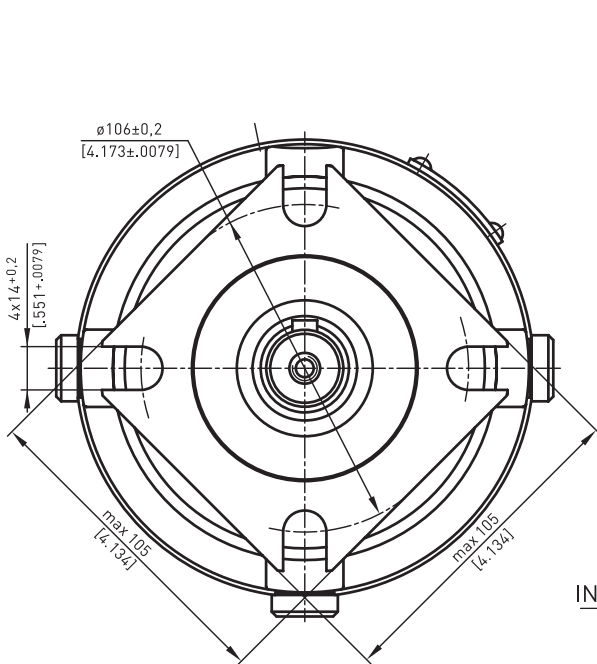
Zulässige Drehmomentabgabe je nach Wellentyp Permissible output torque based on shaft type daNm [lb-in]					
C	CO	SH	SA	CB	KB
34 [3010]	34 [3010]	40 [3540]	40 [3540]	77 [6815]	95 [8400]

WEITERE TECHNISCHE INFORMATIONEN FURTHER TECHNICAL INFORMATION

Zulässige Wellenbelastung ELB 288
 Permissible shaft load ELB 288



EINBAUMAß DIMENSION



- ▽ Anbaufläche (Anzugsmoment für Schraube M12x30 - 8.8 DIN 912 - 7 daNm)
Place for attachment (tightening torque for screw M12x30 - 8.8 DIN 912 - 7 daNm)
- ▽▽ Anbaufläche
Place for attachment
- C Bremsenlüftanschluss: G1/4", 9mm tief
Brake release port: G1/4", 9mm deep
- D Entlüftungsanschluss: G1/4", 9mm tief
Drainage tap: G1/4", 9mm deep