

LENKUNGSEINHEIT HKUS ... /3, 4, 8

STEERING UNIT HKUS ... /3, 4, 8

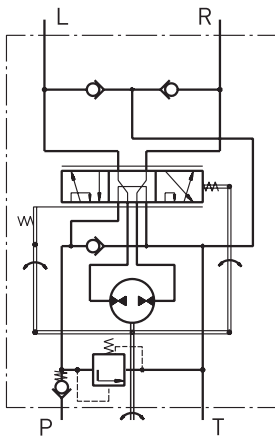
HKUS Lenkungseinheiten basieren auf HKU Lenkungseinheiten. Sie haben jedoch eingebaute Druckbegrenzungs- und Schockventile. HKUS ist eine sehr kompakte Lenkungseinheit, die den Bedarf an zusätzlichen Hydraulikkomponenten im System reduziert.

HKUS steering units are based on HKU steering units. They've got integrated pressure relief and shock valves. HKUS is a very compact steering unit that reduces the need for additional hydraulic components in the system.

SCHALTZEICHEN GRAPHIC SYMBOL

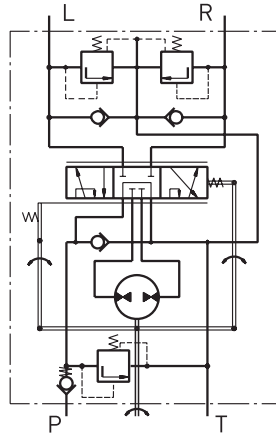
HKUS .../3

Open Center - Load Reaction



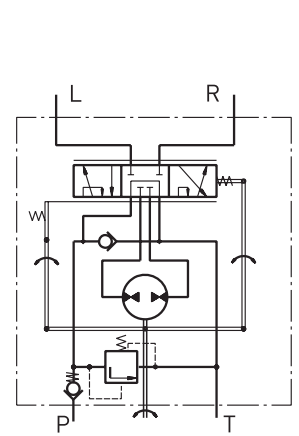
HKUS .../4

Open Center - Non Load Reaction



HKUS .../8

Open Center - Non Load Reaction



TECHNISCHE DATEN TECHNICAL DATA

Typ Type	HKUS 40	HKUS 50	HKUS 63	HKUS 80	HKUS 100	HKUS 125	HKUS 160	HKUS 200	HKUS 250	HKUS 320	HKUS 400	HKUS 500
Schluckvolumen Displacement	39,6 [2.42]	49,5 [3.00]	65,6 [4.00]	79,2 [4.83]	99,0 [6.04]	123,8 [7.56]	158,4 [9.67]	198,0 [12.1]	247,5 [15.1]	316,8 [19.3]	396,0 [24.2]	495,0 [30.2]
Nennförderstrom * Rated flow*	4 [1.1]	5 [1.3]	6 [1.6]	8 [2.1]	10 [2.6]	13 [3.4]	16 [4.2]	20 [5.3]	25 [6.6]	32 [8.4]	40 [10.6]	50 [13.2]
Nenndruck Rated pressure	140 [2030]		170 [2465]									
Druckeinstellung Druckbegrenzungsventil** Relief valve pressure setting**	80 / 100 / 125 / 150 / 170 [1160] / [1450] / [1810] / [2175] / [2465]											
Druckeinstellung Schockventile*** Shock valve pressure setting***	140 / 160 / 180 / 200 / 220 [2030] / [2320] / [2610] / [2900] / [3190]											
Max.Konstantdruck in Leitung T Max. cont. pressure in line T - Standard - Option H	25 [363] [50 [725] HKUS .../8] 40 [580]											
Max.Drehmoment bei Servoverstärkung Max. torque at servoamplifying - Standard - Option LT	3,0 Nm [26 lb-in] 1,8 Nm [15 lb-in]						3,0 Nm [26 lb-in] -					
Max.Drehmoment ohne Servoverstärkung Max. torque without servoamplifying	120 Nm [1065 lb-in]											
Gewicht Weight	5,3 [11.7]	5,4 [11.9]	5,5 [12.2]	5,6 [12.4]	5,7 [12.6]	5,8 [12.8]	6,0 [13.2]	6,3 [13.9]	6,5 [14.3]	7,0 [15.4]	7,4 [16.3]	8,0 [17.6]

- * Bei 100 U/min
- ** Bei 100 U/min und Viskosität von 21 mm²/s [105 SUS] und 50° C [122 °F]
- *** Bei 2 lpm [.53 GPM] und Viskosität 21 mm²/s [105 SUS] und 50° C [122 °F]
- * At 100 rev-min
- ** At 100 rev/min and viscosity 21 mm²/s [105 SUS] and 50° C [122 °F]
- *** At 2 lpm [.53 GPM] and viscosity 21 mm²/s [105 SUS] and 50° C [122 °F]

BESTELLCODE ORDER CODE

HKUS	1	/	2	-	3	4	5	6	7	8	9
------	---	---	---	---	---	---	---	---	---	---	---

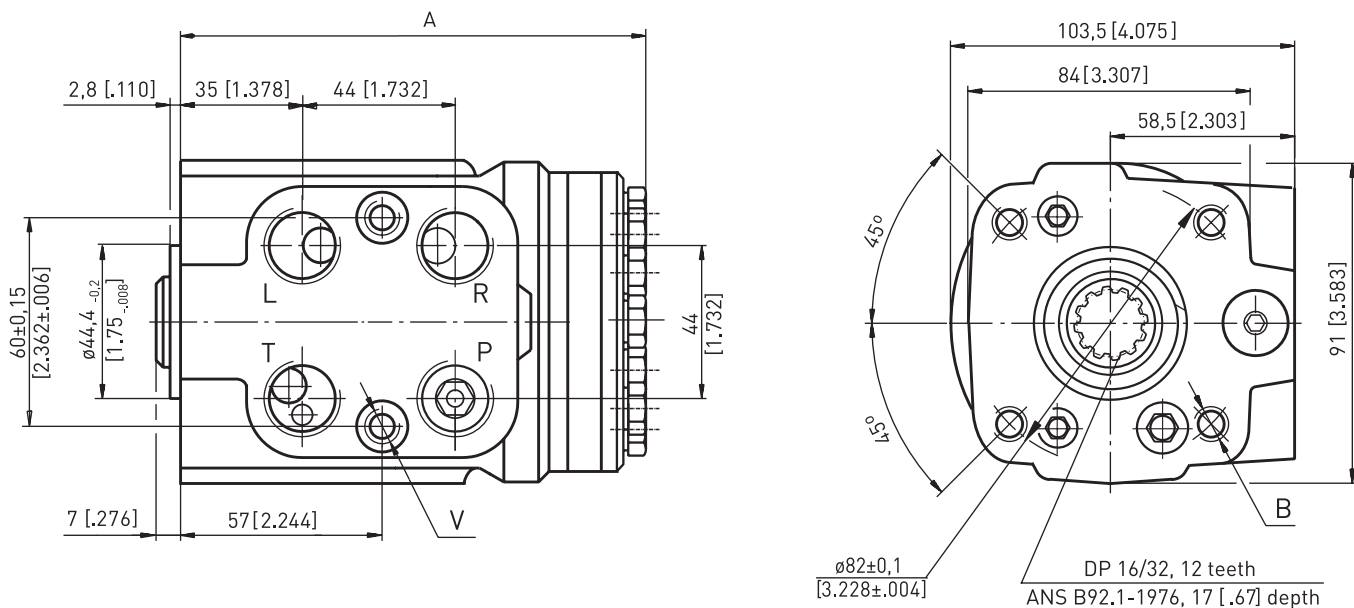
1.	Schluckvolumen Displacement
40	39,6 cm ³ /U ccm/rev [2.42 in ³ /rev]
50	49,5 cm ³ /U ccm/rev [3.00 in ³ /rev]
63	65,6 cm ³ /U ccm/rev [4.00 in ³ /rev]
80	79,2 cm ³ /U ccm/rev [4.83 in ³ /rev]
100	99,0 cm ³ /U ccm/rev [6.04 in ³ /rev]
125	123,8 cm ³ /U ccm/rev [7.56 in ³ /rev]
160	158,4 cm ³ /U ccm/rev [9.67 in ³ /rev]
200	198,0 cm ³ /U ccm/rev [12.10 in ³ /rev]
250	247,5 cm ³ /U ccm/rev [15.10 in ³ /rev]
320	316,8 cm ³ /U ccm/rev [19.30 in ³ /rev]
400	396,0 cm ³ /U ccm/rev [24.20 in ³ /rev]
500	495,0 cm ³ /U ccm/rev [30.20 in ³ /rev]
2.	Ausführung Version
3	Open Center - Load Reaction
4	Open Center - Non Load Reaction
8	Open Center - Non Load Reaction
3.	Druckeinstellung Druckbegrenzungsventil Relief valve pressure setting
80 / 100 / 125 / 150 / 170	
4.	Anschlüsse und Bohrungen Ports and holes
frei omit	BSPP (ISO 228)

M	Metrisch (ISO 262) Metric (ISO 262)
A	SAE (ANSI B 1.1 - 1982)
5.	Max. Konstantdruck in Leitung T Max. continuous pressure in line T
frei omit	Standard Standard
H	Hochdruck High pressure
6.	Drehmoment Eingang Input torque
frei omit	Standard Standard
LT*	Niedrig Low
7.	Geräuschpegel Noise level
frei omit	Standard Standard
LN*	Niedrig Low
8.	Lackierung Paint
frei omit	Keine Lackierung Low
P	Lackiert (Farbe auf Anfrage) Paint (colour on request)
PC	Korrosionsschutzfarbe (Farbe auf Anfrage) Corrosion protected paint (colour on request)
PS	Speziallackierung (Anschlussflächen blank / Farbe auf Anfrage) Paint (non painted feeding surfaces / colour on request)
PCS	Korr. Schutzfarbe Spezial (Anschlussflächen blank / Farbe auf Anfrage) Corrosion prot. paint special (non painted feeding surfaces / on request)
9.	Design Serie Design series
frei omit	Betriebsspezifisch Factory specified

* Nur für HKU .../4 erhältlich
* Only available for HKU .../4

EINBAUMAß DIMENSION

HKUS .../3, 4, 8



	HKU 40	HKU 50	HKU 63	HKU 80	HKU 100	HKU 125	HKU 160	HKU 200	HKU 250	HKU 320	HKU 400	HKU 500
Maß A Dimension A mm [in]	130,8 [5.10]	132,2 [5.20]	133,9 [5.27]	136,2 [5.36]	138,8 [5.60]	142,2 [5.60]	146,8 [5.78]	152,2 [5.99]	158,8 [6.25]	168,2 [6.62]	178,8 [7.04]	192,00 [7.56]

4. ANSCHLÜSSE UND BOHRUNGEN 4. PORTS AND HOLES

Option Option	Anschlüsse Ports P*, T, R, L	Montagebohrung Mounting hole B	Montagebohrung Mounting hole V
-	G1/2" 17 [.67] tief deep	4x M10 18 [.71] tief deep	2x M10x1 16 [.63] tief deep
M	M22x1,5 17 [.67] tief deep	4x M10 18 [.71] tief deep	2x M10x1 16 [.63] tief deep
A	3/4-16 UNF O-Ring 17 [.67] tief deep	4x 3/8-16 UNC 15,7 [.62] tief deep	2x 3/8-24 UNF 14,2 [.56] tief deep

* Anschluss P: min. 15 [.59] tief für Verrohrung

* Port P: min. 15 [.59] depth for pipe mounting

Übersicht der eingebauten Venile Overview of installed valves

Version Version	Manuelles Servolenkung Schockventil Manual steering check valve	Druckbegrenzungsventil Relief valve	Ansaugrückschlagventil Inlet check valve	Zylinder Druckbegrenzungsventil Cylinder relief valve	Antikavitationsventil Anti cavitation valve
3	○	○	○		○
4	○	○	○	○	○
8	○	○	○		

○ Eingebaut
Built-in