

# LENKUNGSEINHEIT HKU ... /3, 4

## STEERING UNIT HKU ... /3, 4

### ANWENDUNG

Unsere Lenkeinheiten werden in langsam fahrenden Fahrzeugen verwendet deren Höchstgeschwindigkeit 60 km/h nicht übersteigt.

Zum Beispiel:

- o Baumaschinen
- o Gabelstapler
- o Forstmaschinen
- o Geländegängige Fahrzeuge
- o usw.

Die Lenkungseinheit HKU arbeitet mit radialer Verteilung und zwei Drehschieber-Steuerventile im Gehäuse die den Ölstrom regeln.

### APPLICATION

Our steering units are used in low-speed vehicles which driving speed does not exceed 60 km/h.

For example:

- o Building machines
- o Fork-lift trucks
- o Harvesting machines
- o Off-highway equipment
- o Etc.

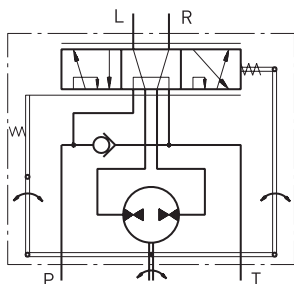
Steering unit HKU works with radial distribution and two rotary tracing valves in the housing which controls the oil flow.

## SCHALTZEICHEN

### GRAPHIC SYMBOL

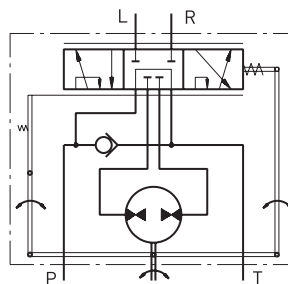
#### HKU .../3

Open Center - Load Reaction



#### HKU .../4

Open Center - Non Load Reaction



## TECHNISCHE DATEN

### TECHNICAL DATA

Typ Type	HKU 40/3	HKU 50/3	HKU 63/3	HKU 80/3	HKU 100/3	HKU 125/3	HKU 160/3	HKU 200/3	HKU 250/3	HKU 320/3	HKU 400/3					
	HKU 40/4	HKU 50/4	HKU 63/4	HKU 80/4	HKU 100/4	HKU 125/4	HKU 160/4	HKU 200/4	HKU 250/4	HKU 320/4	HKU 400/4	HKU 500/4	HKU 630/4	HKU 800/4	HKU 1000/4	
Schluckvolumen Displacement	39,6 [2.42]	49,5 [3.00]	65,6 [4.00]	79,2 [4.83]	99,0 [6.04]	123,8 [7.56]	158,4 [9.67]	198,0 [12.1]	247,5 [15.1]	316,8 [19.3]	396,0 [24.2]	495,0 [30.2]	623,6 [38.1]	793,0 [48.4]	990,0 [60.4]	
Nennförderstrom* Rated flow*	4 [1.1]	5 [1.3]	6 [1.6]	8 [2.1]	10 [2.6]	13 [3.4]	16 [4.2]	20 [5.3]	25 [6.6]	32 [8.4]	40 [10.6]	50 [13.2]	63 [16.6]	70 [15.51]		
Neendruck Rated pressure	140 [2030]		170 [2465]									140 [2030]		100 [1450]		
Max. Konstantdruck in Leitung T Max. continuous pressure in line T	25 bar [363 PSI] 40 bar [480 PSI]															
Max. Drehmoment bei Servoverstärkung Max. torque at servoamplifying	3,0 Nm [26 lb-in] 1,8 Nm [15 lb-in]											3,0 Nm [26 lb-in] -				
Max. Drehmoment ohne Servoverstärkung Max. torque without servoamplifying	120 Nm [1065 lb-in]															
Gewicht Weight	5,3 [11.7]	5,4 [11.9]	5,5 [12.2]	5,6 [12.4]	5,7 [12.6]	5,8 [12.8]	6,0 [13.2]	6,3 [13.9]	6,5 [14.3]	7,0 [15.4]	7,4 [16.3]	8,0 [17.6]	8,7 [19.2]	9,6 [21.2]	10,6 [23.4]	

\* Ölstrom bei dem die maximale Drehzahl erreicht wird:

- o 100 U/min bei HKU40 - HKU630
- o 87 U/min bei HKU 800
- o 70 U/min bei HKU 1000

\* Inlet flow providing maximum speed of rotation:

- o 100 rpm bei HKU40 - HKU630
- o 87 rpm bei HKU 800
- o 70 rpm bei HKU 1000

# BESTELLCODE ORDER CODE

HKU	1	/	2	-	3	4	5	6	7	8
-----	---	---	---	---	---	---	---	---	---	---

1.	Schluckvolumen Displacement
40	39,6 cm <sup>3</sup> /U ccm/rev [2.42 in <sup>3</sup> /rev]
50	49,5 cm <sup>3</sup> /U ccm/rev [3.00 in <sup>3</sup> /rev]
63	65,6 cm <sup>3</sup> /U ccm/rev [4.00 in <sup>3</sup> /rev]
80	79,2 cm <sup>3</sup> /U ccm/rev [4.83 in <sup>3</sup> /rev]
100	99,0 cm <sup>3</sup> /U ccm/rev [6.04 in <sup>3</sup> /rev]
125	123,8 cm <sup>3</sup> /U ccm/rev [7.56 in <sup>3</sup> /rev]
160	158,4 cm <sup>3</sup> /U ccm/rev [9.67 in <sup>3</sup> /rev]
200	198,0 cm <sup>3</sup> /U ccm/rev [12.10 in <sup>3</sup> /rev]
250	247,5 cm <sup>3</sup> /U ccm/rev [15.10 in <sup>3</sup> /rev]
320	316,8 cm <sup>3</sup> /U ccm/rev [19.30 in <sup>3</sup> /rev]
400	396,0 cm <sup>3</sup> /U ccm/rev [24.20 in <sup>3</sup> /rev]
500*	495,0 cm <sup>3</sup> /U ccm/rev [30.20 in <sup>3</sup> /rev]
630*	623,6 cm <sup>3</sup> /U ccm/rev [38.05 in <sup>3</sup> /rev]
800*	793,0 cm <sup>3</sup> /U ccm/rev [48.40 in <sup>3</sup> /rev]
1000*	999,0 cm <sup>3</sup> /U ccm/rev [60.40 in <sup>3</sup> /rev]

2.	Ausführung Version
3	Open Center - Load Reaction
4	Open Center - Non Load Reaction

3.	Anschlüsse und Bohrungen Ports and holes
frei omit	BSPP (ISO 228)
M	Metrisch (ISO 262) Metric (ISO 262)
A	SAE (ANSI B 1.1 - 1982)
BA**	SAE (ANSI B 1.1 - 1982)

4.	Max. Konstantdruck in Leitung T Max. continuous pressure in line T
frei omit	Standard Standard
H	Hochdruck High pressure

5.	Drehmoment Eingang Input torque
frei omit	Standard Standard
LT**	Niedrig Low

6.	Geräuschpegel Noise level
frei omit	Standard Standard
LN**	Niedrig Low

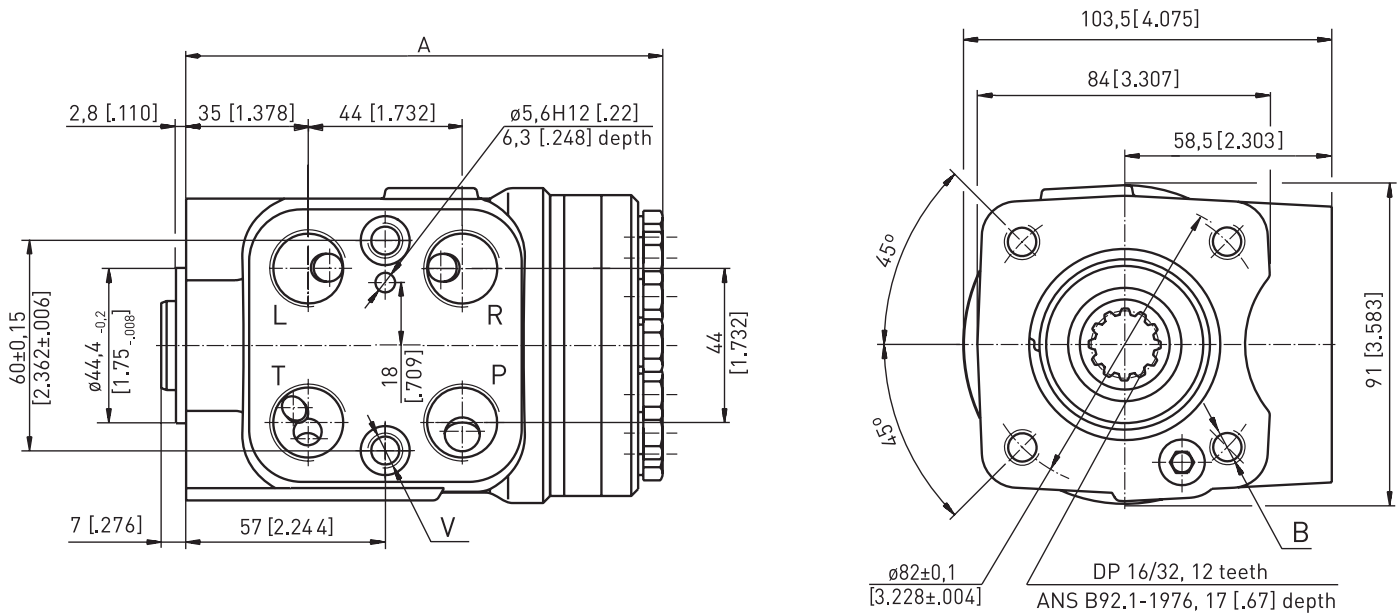
7.	Lackierung Paint
frei omit	Keine Lackierung Low
P	Lackiert (Farbe auf Anfrage) Paint (colour on request)
PC	Korrosionsschutzfarbe (Farbe auf Anfrage) Corrosion protected paint (colour on request)
PS	Speziellackierung (Anschlussflächen blank / Farbe auf Anfrage) Paint (non painted feeding surfaces / colour on request)
PCS	Korr. Schutzfarbe Spezial (Anschlussflächen blank / Farbe auf Anfrage) Corrosion prot. paint special (non painted feeding surfaces / on request)

8.	Design Serie Design series
frei omit	Betriebsspezifisch Factory specified

\* Nur für HKU ... /4 erhältlich  
Only available for HKU .../4  
\*\* Nur für HKU40 - HKU200 erhältlich  
Only available for HKU40 - HKU200

# EINBAUMAß DIMENSION

## HKU .../3, 4



	HKU 40	HKU 50	HKU 63	HKU 80	HKU 100	HKU 125	HKU 160	HKU 200	HKU 250	HKU 320	HKU 400	HKU 500	HKU 630	HKU 800	HKU 1000
Maß A Dimension A mm [in]	130,85 [5.10]	132,20 [5.20]	133,90 [5.27]	136,20 [5.36]	138,80 [5.60]	142,20 [5.60]	146,80 [5.78]	152,20 [5.99]	158,80 [6.25]	168,20 [6.62]	178,80 [7.04]	192,00 [7.56]	209,30 [8.24]	232,20 [9.14]	258,60 [10.18]

## 3. ANSCHLÜSSE UND BOHRUNGEN 3. PORTS AND HOLES

Option Option	Anschlüsse Ports P, T, R, L	Montagebohrung Mounting hole B	Montagebohrung Mounting hole V
-	G1/2" 17 [.67] tief deep	4x M10 18 [.71] tief deep	2x M10x1 16 [.63] tief deep
M	M22x1,5 17 [.67] tief deep	4x M10 18 [.71] tief deep	2x M10x1 16 [.63] tief deep
A	3/4-16 UNF O-Ring 17 [.67] tief deep	4x 3/8-16 UNC 15,7 [.62] tief deep	2x 3/8-24 UNF 14,2 [.56] tief deep
BA *	9/16-18 UNF O-Ring 17 [.67] tief deep	4x 3/8-16 UNC 15,7 [.62] tief deep	2x 3/8-24 UNF 14,2 [.56] tief deep

\* Nur für HKU40 - HKU200 erhältlich  
\* Only available for HKU40 - HKU200