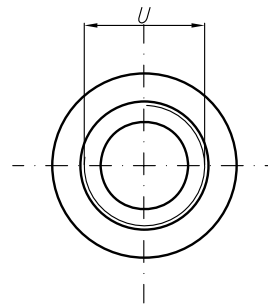
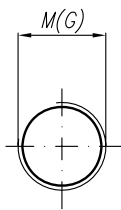


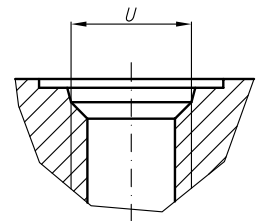
V
Variants for ports – M;G;U

Designations:

- ...X167 – Normal version (flanges);
- ...X167M – Metric threads;
- ...X167G – GAS threads;
- ...X167U – SAE threads;



SAE J475 (ISO R725)



Type	Displacement cm ³ /rev	Flow		Pressure P _{nom} bar	max Speed n rpm	Dimension														
		at 1500 rpm l/min	at max rpm l/min			A mm	B mm	Inlet						Outlet						
								E	F	d	M	G	U	E	F	d	M	G	U	
20A(C)4,5X167...	4,5	6,14	14,33	250	3500	42,1	86,8													
20A(C)6,3X167...	6,3	8,69	20,29	250	3500	42,1	86,8	30,2	13,1	M6-6H		G1/2			13,1					
20A(C)8,2X167...	8,2	11,32	26,40	250	3500	42,1	86,8													
20A(C)10X167...	10	13,95	32,55	250	3500	46,6	95,8													
20A(C)11X167...	11,3	15,76	36,78	250	3500	47,6	97,9													
20A(C)12X167...	12	16,92	39,48	250	3500	48,2	99,1													
20A(C)14X167...	14	19,95	46,55	250	3500	49,6	102,1													
20A(C)15X167...	15	21,60	36,00	250	2500	50,6	103,7	39,7	19	M8-6H	M20x1,5	G3/4	1	1/16"-12UNF						
20A(C)16X167...	16	23,04	38,40	250	2500	51,6	105,3							30,2						
20A(C)19X167...	19	27,36	45,60	200	2500	53,6	110,3								14,2		M6-6H			
20A(C)22X167...	22	31,68	42,24	180	2000	56,6	115,3													
20A(C)25X167...	25	36,00	48,00	160	2000	58,8	120,2							39,7	19	M8	M20x1,5			

