

Inhaltsverzeichnis

Index

Typ <i>Type</i>	Seite <i>Page</i>
KPB	3-1
KPW	3-2
KP ... R / KP ... S	3-3
KP ... W	3-4
KP ... T	3-5
KP ... V	3-6
Flanschbare Ventile <i>Flangeable valves</i>	3-7
Rohrleitungsventile <i>Pipe mounted valves</i>	3-8

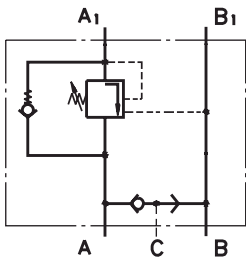
Senkbremseventile mit Bremssteuerung

Overcenter valves with brake control

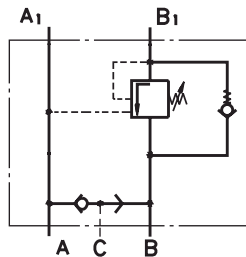


Schaltzeichen

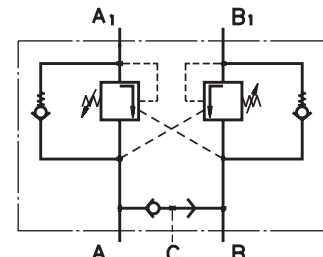
Graphic symbol



Einfachwirkendes Senkbremseventil
Single overcenter valve
Typ Type
KPB ... AE



Einfachwirkendes Senkbremseventil
Single overcenter valve
Typ Type
KPB ... BE



Doppeltwirkendes Senkbremseventil
Dual overcenter valve
Typ Type
KPB ... D

Bestellcode KPB...

Ordercode KPB...

KPB	1	-	2	/	1	3	4	5	6
-----	---	---	---	---	---	---	---	---	---

Pos. 1	Gehäuse Typ Housing type
R	Ventilblock für EPM, EPRM und EPMH Motoren Valve block for EPM, EPRM and EPMH motors
S	Ventilblock für EPMS Motoren Valve block for EPMS motors
W	Ventilblock für EPRM-W und HW Motoren Valve block for EPRM-W and HW motors
T	Ventilblock für EPMT Motoren Valve block for EPMT motors
V	Ventilblock für EPMV Motoren Valve block for EPMV motors

Pos. 2	Druckeinstellbereich, bar [PSI] Pressure range, bar [PSI]
250	70 -250 [1015-3625] Standardeinstellung 250 bar @ 5 l/min 70 -250 [1015-3625] Standard setting 250 bar @ 5 lpm

Pos. 3	Anzahl Ventile Number of valves
D	Zwei - Doppeltwirkend Two - Dual
E	Eins - Einfachwirkend (nur für R und S) One - Single (for R and S only)
AE	Eins in Leitung A - Einfachwirkend (nur für T, V und W) One in line A - Single (for T, V and W only)
BE	Eins in Leitung B - Einfachwirkend (nur für T, V und W) One in line B - Single (for T, V and W only)

Pos. 4	Anschlüsse Ports
frei omit	BSPP (ISO 228)
M	Metrisch metric (ISO 262)
A	SAE (ANSI B 1.1 - 1982)

Pos. 5	Lackierung Paint
frei omit	Nicht lackiert No paint
P	Lackiert (Farbe auf Anfrage) Paint (Colour on request)
PC	Korrosionsschutzfarbe (Farbe auf Anfrage) Corrosion protected paint (Colour on request)

Pos. 6	Design Serie Design series
frei omit	Betriebsspezifisch Factory specified

Technische Daten

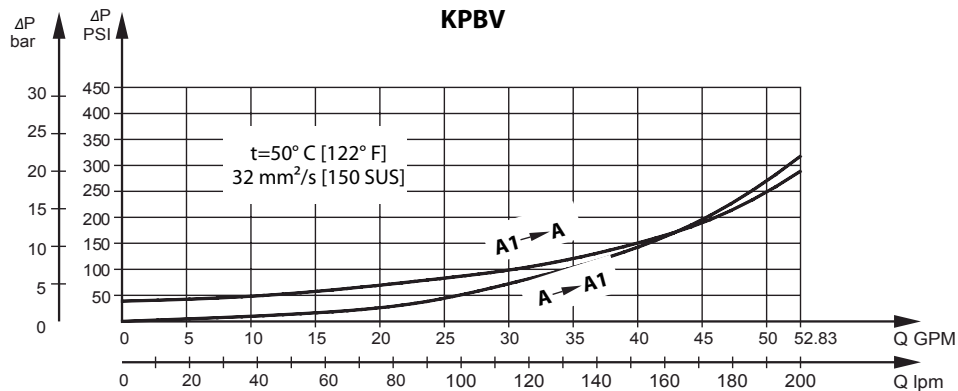
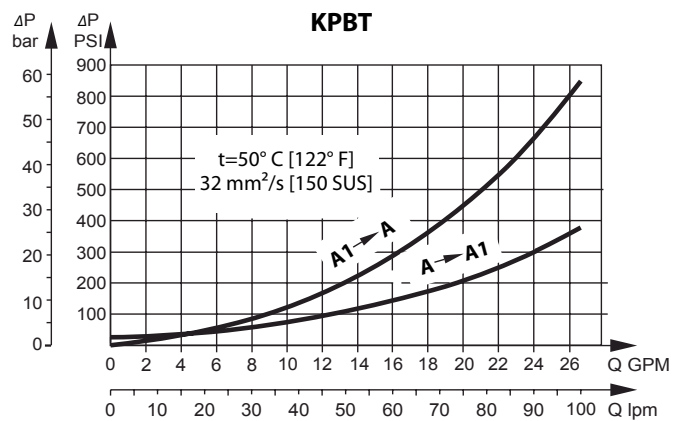
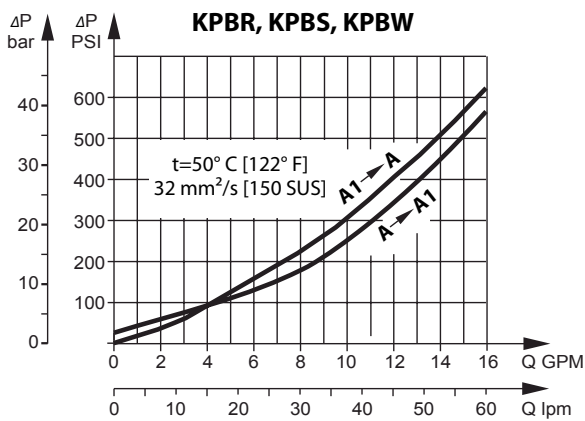
Technical datas

Parameter Parameters	Typ Type									
	KPBR...E	KPBS...E	KPBW...E	KPBR...D	KPBS...D	KPBW...D	KPBT...E	KPBT...D	KPBV...E	KPBV...D
Max. Ölstrom Flow rate l/min lpm [GPM]	60 [15.85]						100 [26.4]		200 [52.8]	
Nenndruck * Rated pressure * bar [PSI]	60 - 280 [870 - 4060]						70 - 250 [1015 - 3625]			
Verhältnis zwischen Einstell- und Steuerdruck des Ventils Pilot ratio for the valve	4,25 : 1									
Gewicht Weight kg [lb]	3,02 [6.658]	2,90 [6.393]	3,35 [7.385]	3,06 [6.746]	2,92 [6.437]	3,40 [7.496]	5,40 [11.905]	5,80 [12.787]	9,20 [20.283]	9,75 [21.495]

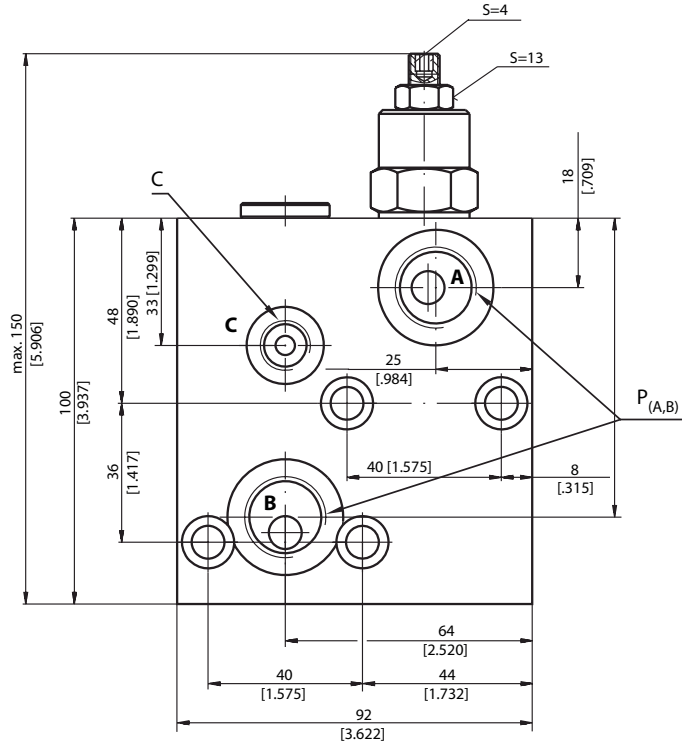
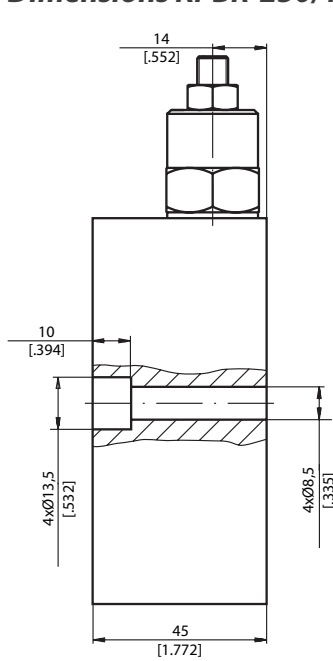
* Druckeinstellung bei 5 l/min [1.3 GPM] und einer Viskosität von 32 mm²/s [150 SUS] bei 50° C [122° F].
 * Pressure setting at 5 lpm [1.3 GPM] and viscosity 32 mm²/s [150 SUS] at 50° C [122° F].

Druckverluste

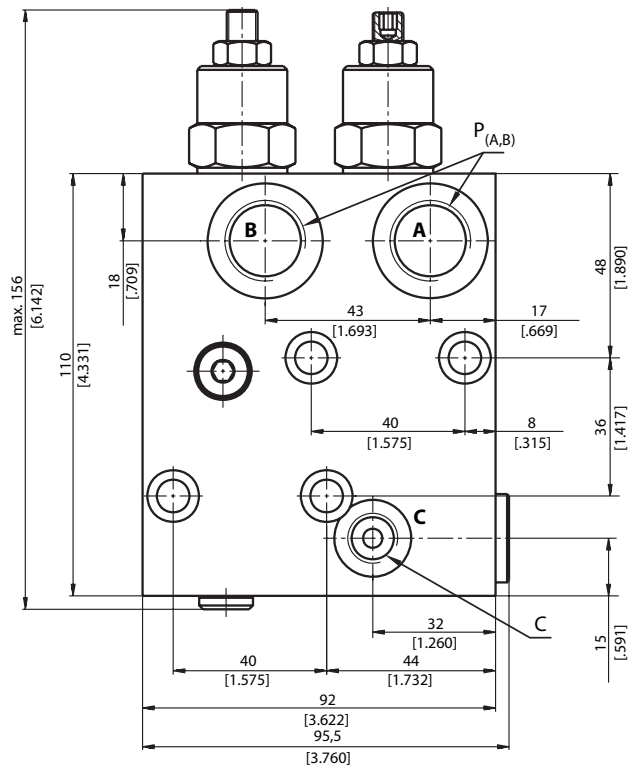
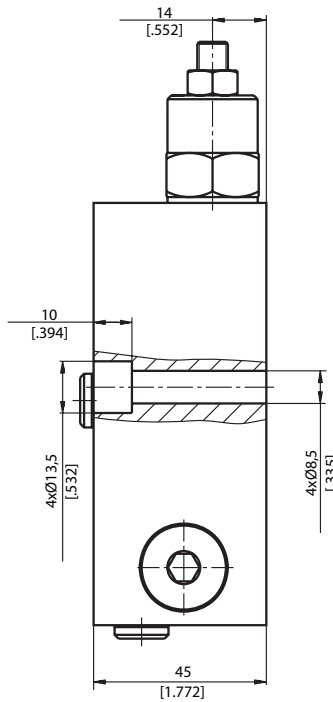
Pressure losses



Einbaumaße KPBR-250/1/E...
Dimensions KPBR-250/1/E...



Einbaumaße KPBR-250/1/D...
Dimensions KPBR-250/1/D...



Anschlüsse Ports

Option	P _(A,B)	C
-	G1/2" 16 [63] tief deep	G1/4" 12 [47] tief deep
M	M22x1,5 16 [63] tief deep	M14x1,5 12 [47] tief deep
A	7/8-14 UNF O-Ring 16 [63] tief deep	7/16-20 UNF O-Ring 12,7 [50] tief deep

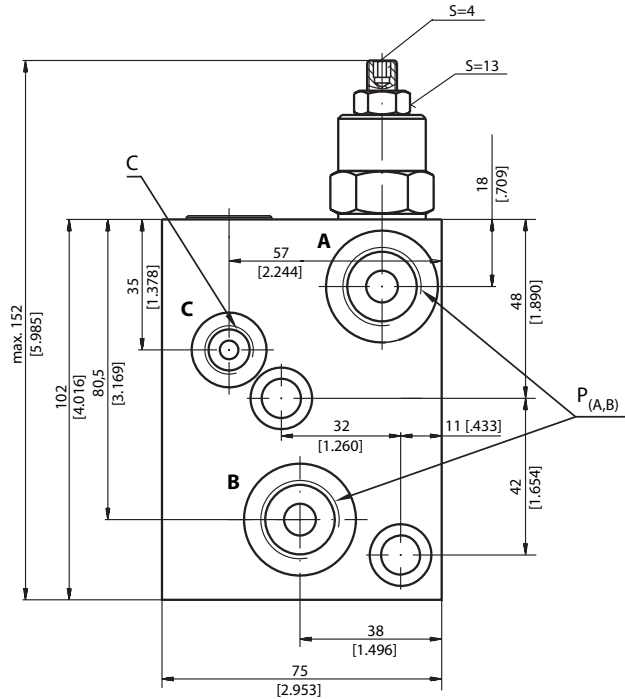
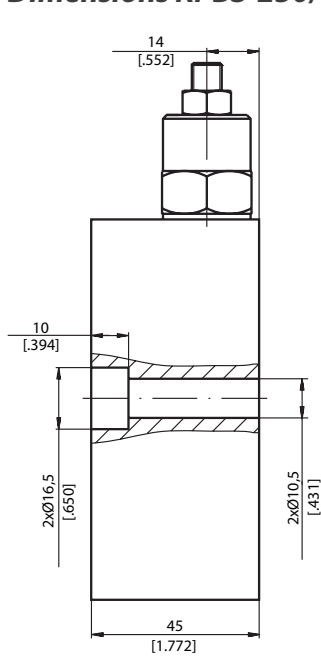
Die Ventilblöcke werden direkt auf den Motor aufgeflanscht.
 Befestigungsschrauben: M8x45 - 8.8 DIN 912 oder 5/16-18 UNC, 1.75 lang

Anzugsmoment: 1,8 daNm [160 lb-in]

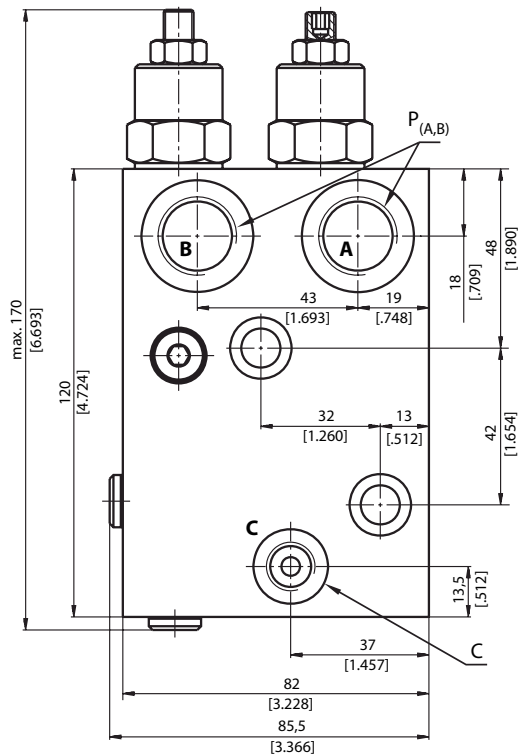
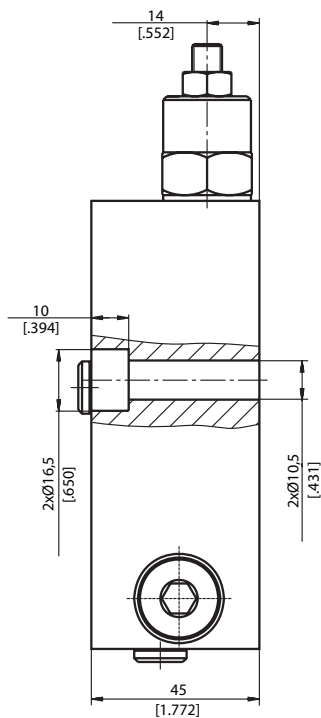
The valve blocks are installed directly on the motor.
 Fastening screw: M8x45 - 8.8 DIN 912 or 5/16-18 UNC, 1.75 long
 Tightening torque: 1.8 daNm [160 lb-in]



Einbaumaße KPBS-250/1/E...
Dimensions KPBS-250/1/E...



Einbaumaße KPBS-250/1/D...
Dimensions KPBS-250/1/D...



Anschlüsse Ports

Option	P (A,B)	C
-	G1/2" 16 [0.63] tief deep	G1/4" 12 [0.47] tief deep
M	M22x1,5 16 [0.63] tief deep	M14x1,5 12 [0.47] tief deep
A	7/8-14 UNF O-Ring 16 [0.63] tief deep	7/16-20 UNF O-Ring 12,7 [0.50] tief deep

Die Ventilblöcke werden direkt auf den Motor aufgeflanscht.
 Befestigungsschrauben: M10x45 - 8.8 DIN 912 oder 3/8-16 UNC, 1.75 lang

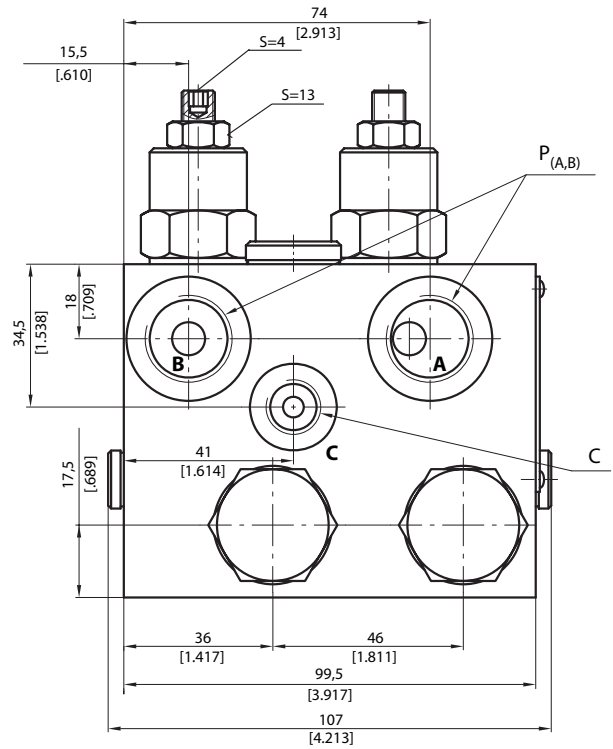
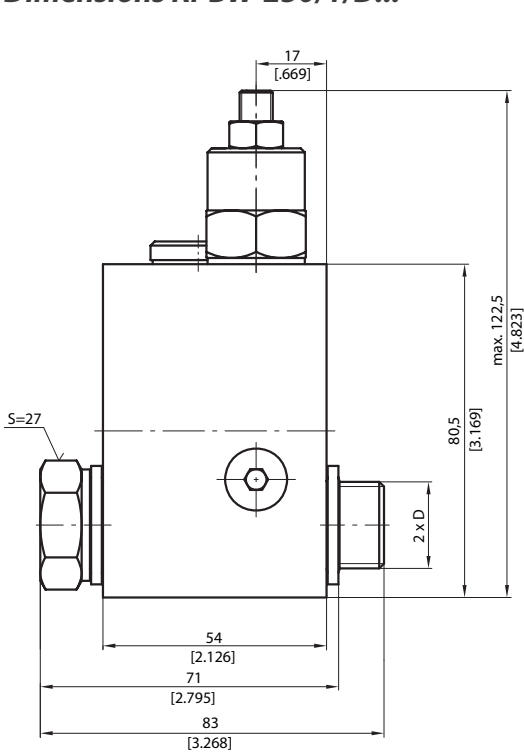
Anzugsmoment: 3,5 daNm [310 lb-in]

The valve blocks are installed directly on the motor.
 Fastening screw: M10x45 - 8.8 DIN 912 or 3/8-16 UNC, 1.75 long

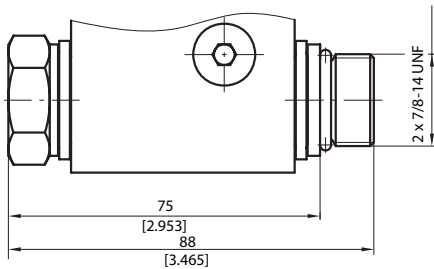
Tightening torque: 3.5 daNm [310 lb-in]



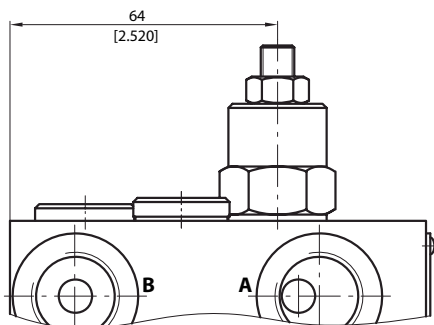
Einbaumaße KPBW-250/1/D...
Dimensions KPBW-250/1/D...



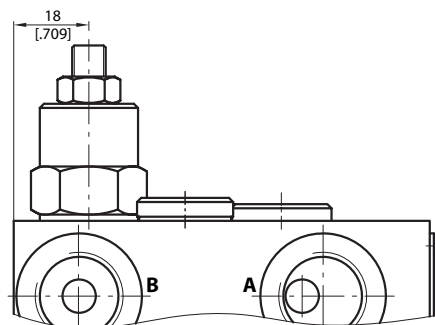
Einbaumaße KPBW-...A
Dimensions KPBW-...A



Einbaumaße KPBW-250/1/AE...
Dimensions KPBW-250/1/AE...



Einbaumaße KPBW-250/1/AE...
Dimensions KPBW-250/1/AE...



Anschlüsse Ports

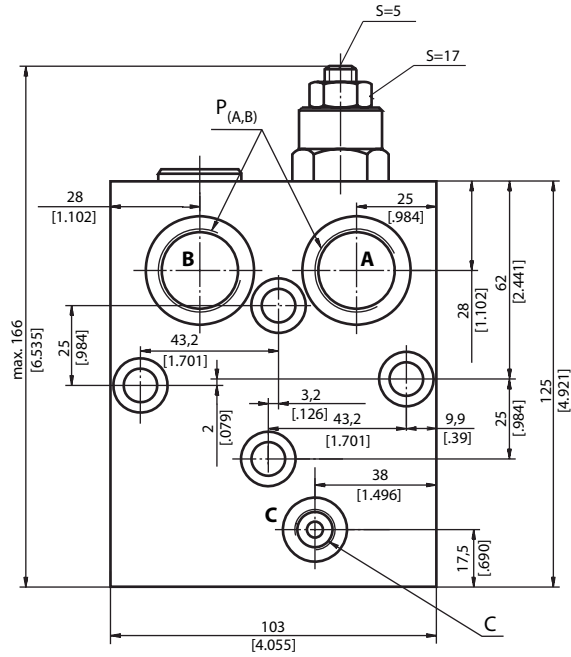
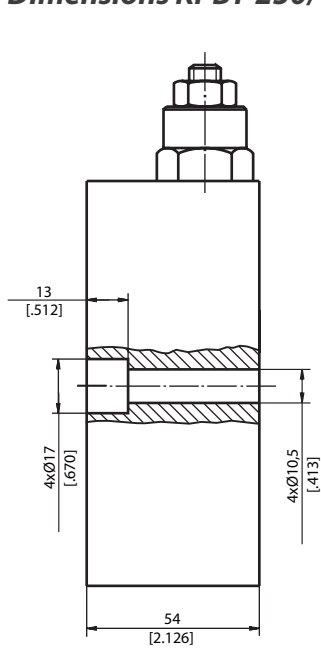
Option Option	P _(A,B)	C	D
-	G1/2" 16 [0.63] tief deep	G1/4" 12 [0.47] tief deep	G1/2" 12 [0.47] tief deep
M	M22x1,5 16 [0.63] tief deep	M14x1,5 12 [0.47] tief deep	M22x1,5 12 [0.47] tief deep
A	7/8-14 UNF O-Ring 16 [0.63] tief deep	7/16-20 UNF O-Ring 12,7 [0.50] tief deep	7/8-14 UNF O-Ring 13 [0.51] tief deep



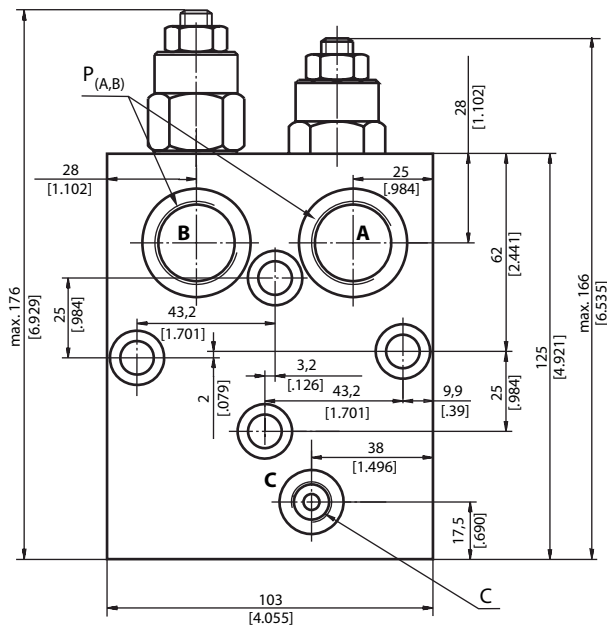
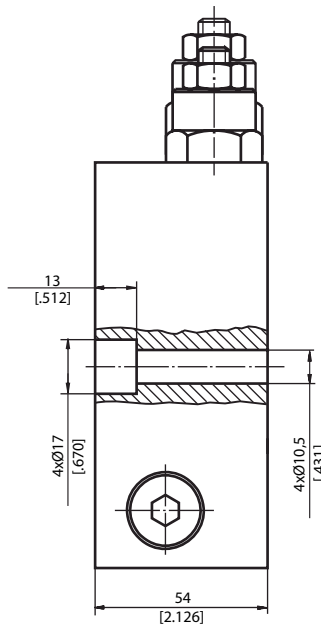
Die Ventilblöcke werden direkt auf den Motor aufgeflanscht.
 Die Schrauben (Gewinde D) liegen dem Ventil bei.
 Anzugsmoment: 8 daNm [710 lb-in]

The valve blocks are installed directly on the motor.
 The screws (thread D) are included in the valve set
 Tightening torque: 8 daNm [710 lb-in]

Einbaumaße KPBT-250/1/E...
Dimensions KPBT-250/1/E...



Einbaumaße KPBT-250/1/D...
Dimensions KPBT-250/1/D...



Anschlüsse Ports

Option	P (A,B)	C
-	G3/4" 17 [0.67] tief deep	G1/4" 14 [0.55] tief deep
M	M27x2 17 [0.67] tief deep	M14x1,5 14 [0.55] tief deep
A	1 1/16-12 UN O-Ring 17 [0.67] tief deep	7/16-20 UNF O-Ring 12,7 [0.50] tief deep

Die Ventilblöcke werden direkt auf den Motor aufgeflanscht.

Befestigungsschrauben: M10x50 - 8.8 DIN 912

Anzugsmoment: 3,5 daNm [310 lb-in]

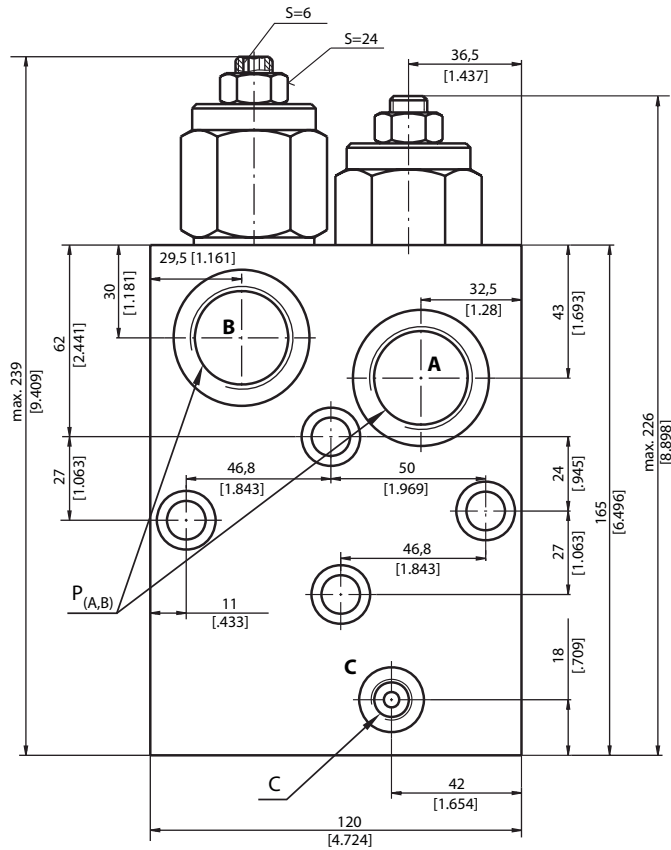
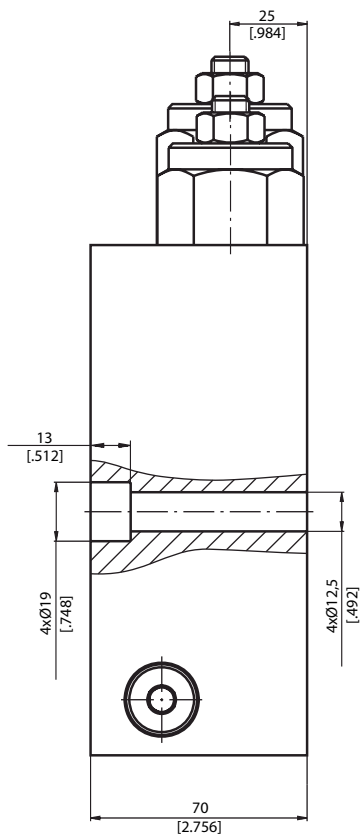
The valve blocks are installed directly on the motor.

Fastening screw: M10x50 - 8.8 DIN 912

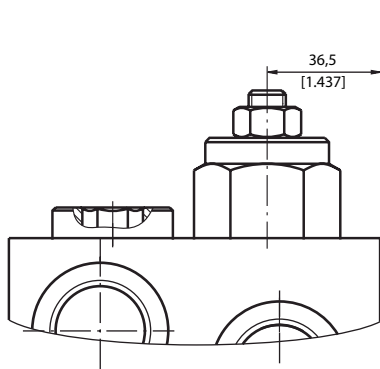
Tightening torque: 3.5 daNm [310 lb-in]



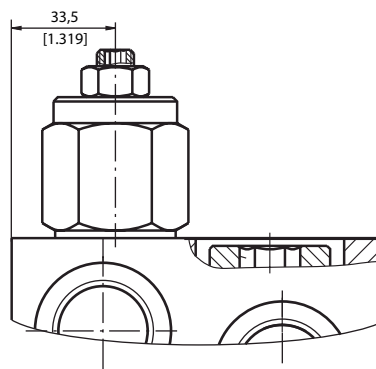
Einbaumaße KPBV-250/1/D...
Dimensions KPBV-250/1/D...



Einbaumaße KPBV-250/1/AE...
Dimensions KPBV-250/1/AE...



Einbaumaße KPBV-250/1/BE...
Dimensions KPBV-250/1/BE...



Anschlüsse Ports

Option Option	P (A,B)	C
-	G1" 20 [0.79] tief deep	G1/4" 14 [0.55] tief deep
M	M33x2 20 [0.79] tief deep	M14x1,5 14 [0.55] tief deep
A	1 5/16-12 UN O-Ring 20 [0.79] tief deep	7/16-20 UNF O-Ring 12,7 [0.50] tief deep

Die Ventilblöcke werden direkt auf den Motor aufgeflanscht.

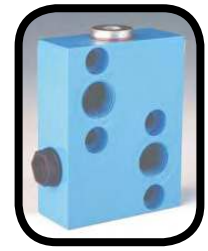
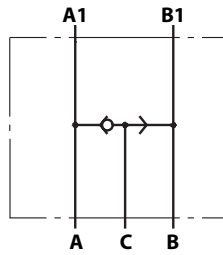
Befestigungsschrauben: M12x70 - 8.8 DIN 912
 Anzugsmoment: 6,5 daNm [575 lb-in]

The valve blocks are installed directly on the motor.
 Fastening screw: M12x70 - 8.8 DIN 912
 Tightening torque: 6.5 daNm [575 lb-in]



Wechselventile

Switchvalves



Bestellcode KPW...

Ordercode KPW...

KPW	1	2	3	4
------------	----------	----------	----------	----------

Pos. 1	Gehäuse Typ <i>Housing type</i>
R	Ventilblock für EPM, EPRM und EPMH Motoren <i>Valve block for EPM, EPRM and EPMH motors</i>
S	Ventilblock für EPMS Motoren <i>Valve block for EPMS motors</i>
T	Ventilblock für EPMT Motoren <i>Valve block for EPMT motors</i>
V	Ventilblock für EPMV Motoren <i>Valve block for EPMV motors</i>
Pos. 2	Anschlüsse <i>Ports</i>
frei omit	BSPP (ISO 228)
M	Metrisch <i>metric</i> (ISO 262)

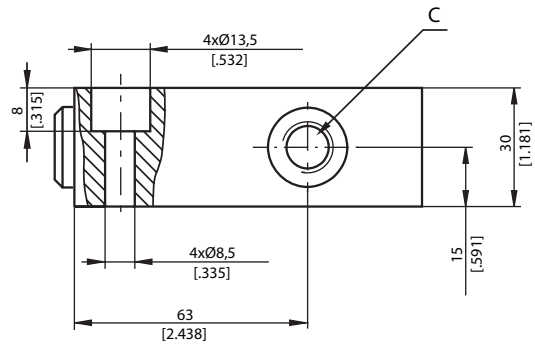
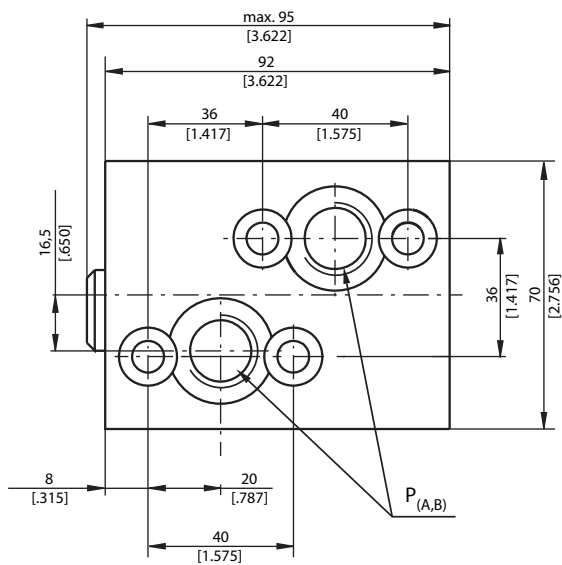
A	SAE (ANSI B 1.1 - 1982)
Pos. 3	Lackierung <i>Paint</i>
frei omit	Nicht lackiert <i>No paint</i>
P	Lackiert (Farbe auf Anfrage) <i>Paint (Colour on request)</i>
PC	Korrosionsschutzfarbe (Farbe auf Anfrage) <i>Corrosion protected paint (Colour on request)</i>
Pos. 4	Design Serie <i>Design series</i>
frei omit	Betriebsspezifisch <i>Factory specified</i>

Technische Daten

Technical datas

Parameter <i>Parameters</i>	Typ <i>Type</i>			
	KPWR	KPWS	KPWT	KPWV
Max. Ölstrom <i>Flow rate</i> l/min /pm [GPM]	60 [15.85]		100 [26.42]	200 [52.83]
Nennndruck <i>Rated pressure</i> bar [PSI]	250 [3625]			
Gewicht <i>Weight</i> kg [lb]	0,85 [1.874]	0,67 [1.477]	1,80 [3.968]	3,15 [6.945]

Einbaumaße KPWR Dimensions KPWR



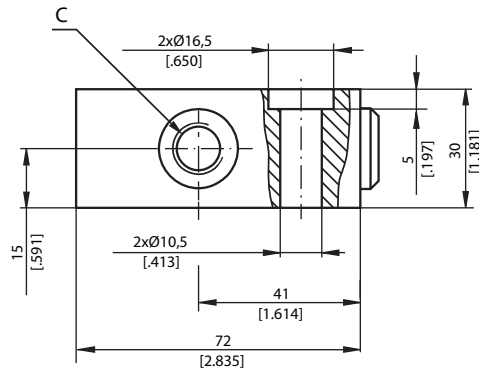
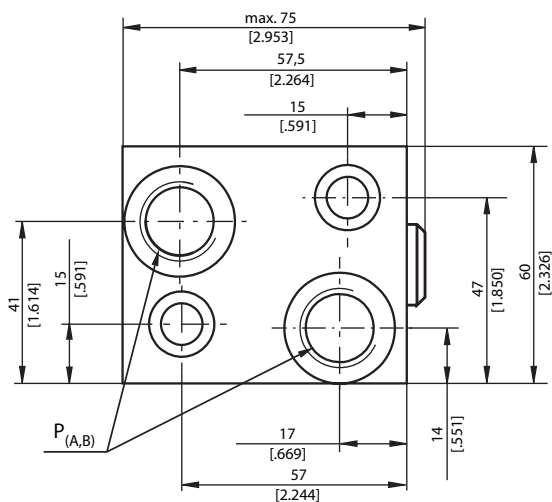
Die Ventilblöcke werden direkt auf den Motor aufgeflanscht.
Befestigungsschrauben: M8x35 - 8.8 DIN 912 oder 5/16-18 UNC, 1.5 lang

Anzugsmoment: 1,8 daNm [160 lb-in]

The valve blocks are installed directly on the motor.
Fastening screw: M8x35 - 8.8 DIN 912 or 5/16-18 UNC, 1.5 long

Tightening torque: 1.8 daNm [160 lb-in]

Einbaumaße KPWS Dimensions KPWS



Die Ventilblöcke werden direkt auf den Motor aufgeflanscht.
Befestigungsschrauben: M10x35 - 8.8 DIN 912 oder 3/8-16 UNC, 1.5 lang

Anzugsmoment: 3,5 daNm [310 lb-in]

The valve blocks are installed directly on the motor.
Fastening screw: M8x45 - 8.8 DIN 912 or 3/8-16 UNC, 1.5 long

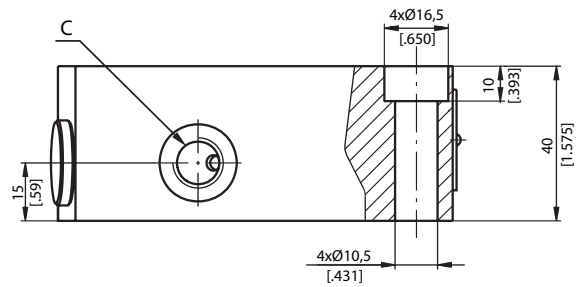
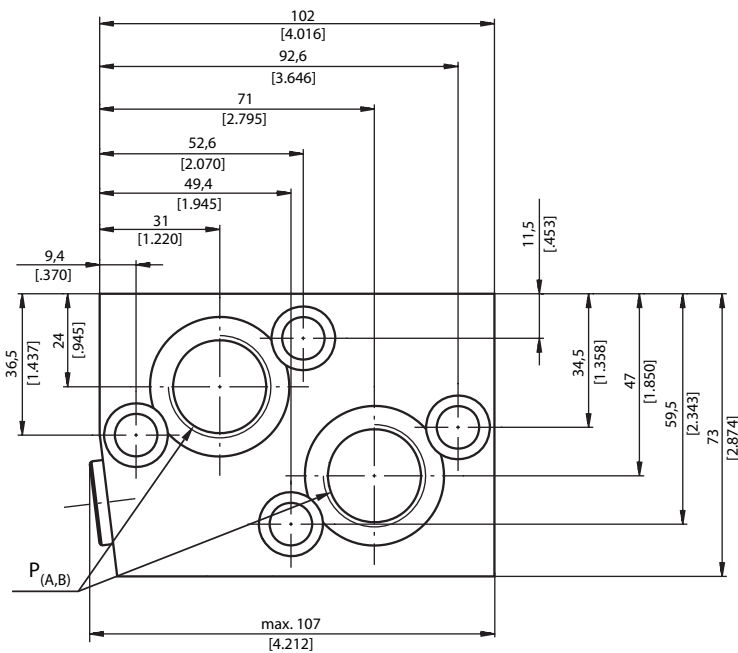
Tightening torque: 3.5 daNm [310 lb-in]

Anschlüsse Ports

Option Option	P _(A,B)	C
-	G1/2" 17 [.67] tief deep	G1/4" 14 [.55] tief deep
M	M22x1,5 17 [.67] tief deep	M14x1,5 14 [.55] tief deep
A	7/8-14 UNF O-Ring 17 [.67] tief deep	7/16-20 UNF O-Ring 12,7 [.50] tief deep



Einbaumaße KPWT Dimensions KPWT



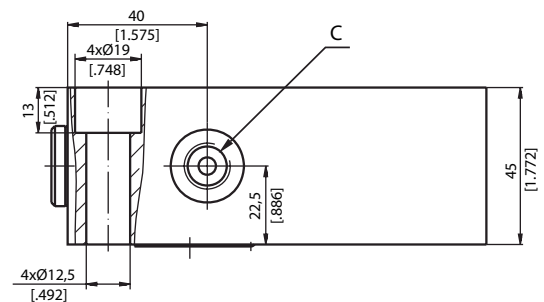
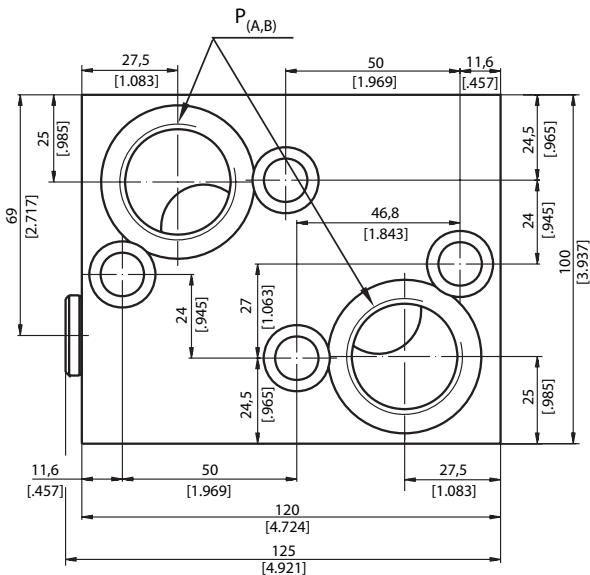
Die Ventilblöcke werden direkt auf den Motor aufgeflanscht.
Befestigungsschrauben: M10x40 - 8.8 DIN 912
Anzugsmoment: 3,5 daNm [310 lb-in]

The valve blocks are installed directly on the motor.
Fastening screw: M10x40 - 8.8 DIN 912
Tightening torque: 3.5 daNm [310 lb-in]

Anschlüsse Ports

Option Option	P (A,B)	C
-	G3/4" 17 [.67] tief deep	G1/4" 14 [.55] tief deep
M	M27x2 17 [.67] tief deep	M14x1,5 14 [.55] tief deep
A	1 1/16-12 UN O-Ring 17 [.67] tief deep	7/16-20 UNF O-Ring 12,7 [.50] tief deep

Einbaumaße KPWV Dimensions KPWV



Die Ventilblöcke werden direkt auf den Motor aufgeflanscht.
Befestigungsschrauben: M12x45 - 8.8 DIN 912
Anzugsmoment: 6,5 daNm [575 lb-in]

The valve blocks are installed directly on the motor.
Fastening screw: M12x45 - 8.8 DIN 912
Tightening torque: 6.5 daNm [575 lb-in]

Anschlüsse Ports

Option Option	P (A,B)	C
-	G1" 20 [.79] tief deep	G1/4" 14 [.55] tief deep
M	M33x2 20 [.79] tief deep	M14x1,5 14 [.55] tief deep
A	1 5/16-12 UN O-Ring 20 [.79] tief deep	7/16-20 UNF O-Ring 12,7 [.50] tief deep

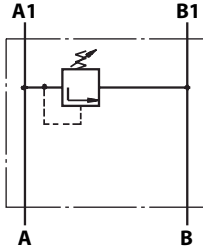
Schockventile KP ... R und KP ... S

Crossover relief valve KP ... R and KP ... S

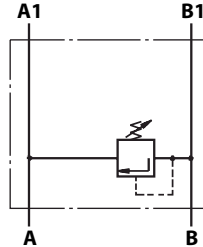


Schaltzeichen

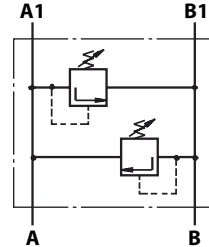
Graphic symbol



Einfachwirkendes Schockventil
Single crossover relief valve
Typ Type
KPE ...



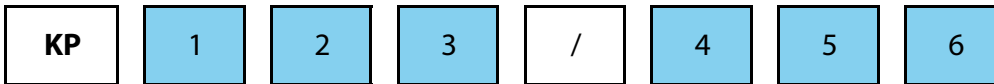
Einfachwirkendes Schockventil
Single crossover relief valve
Typ Type
KPE ...



Doppeltwirkendes Schockventil
Dual crossover relief valve
Typ Type
KPD ...

Bestellcode KP ... R und KP ... S

Ordercode KP ... R and KP ... S



Pos. 1	Anzahl Ventile <i>Number of valves</i>
D	Zwei - Doppeltwirkend <i>Two - Dual</i>
E	Eins - Einfachwirkend <i>One - Single</i>
Pos. 2	Gehäuse Typ <i>Housing type</i>
R	Ventilblock für EPM, EPRM und EPMH Motoren <i>Valve block for EPM, EPRM and EPMH motors</i>
S	Ventilblock für EPMS Motoren <i>Valve block for EPMS motors</i>
Pos. 3	Druckeinstellbereich, bar [PSI] <i>Pressure range, bar [PSI]</i>
100	30-100 [435-1450] Standardeinstellung 100 bar @ 5 l/min <i>30-100 [435-1450] Standard setting 100 bar @ 5 lpm</i>
210	50-210 [725-3050] Standardeinstellung 210 bar @ 5 l/min <i>50-210 [725-3050] Standard setting 210 bar @ 5 lpm</i>
250	20-250 [290-3625] Standardeinstellung 250 bar @ 5 l/min <i>20-250 [290-3625] Standard setting 250 bar @ 5 lpm</i>
300	80-300 [1160-4350] Standardeinstellung 250 bar @ 5 l/min <i>80-300 [1160-4350] Standard setting 250 bar @ 5 lpm</i>

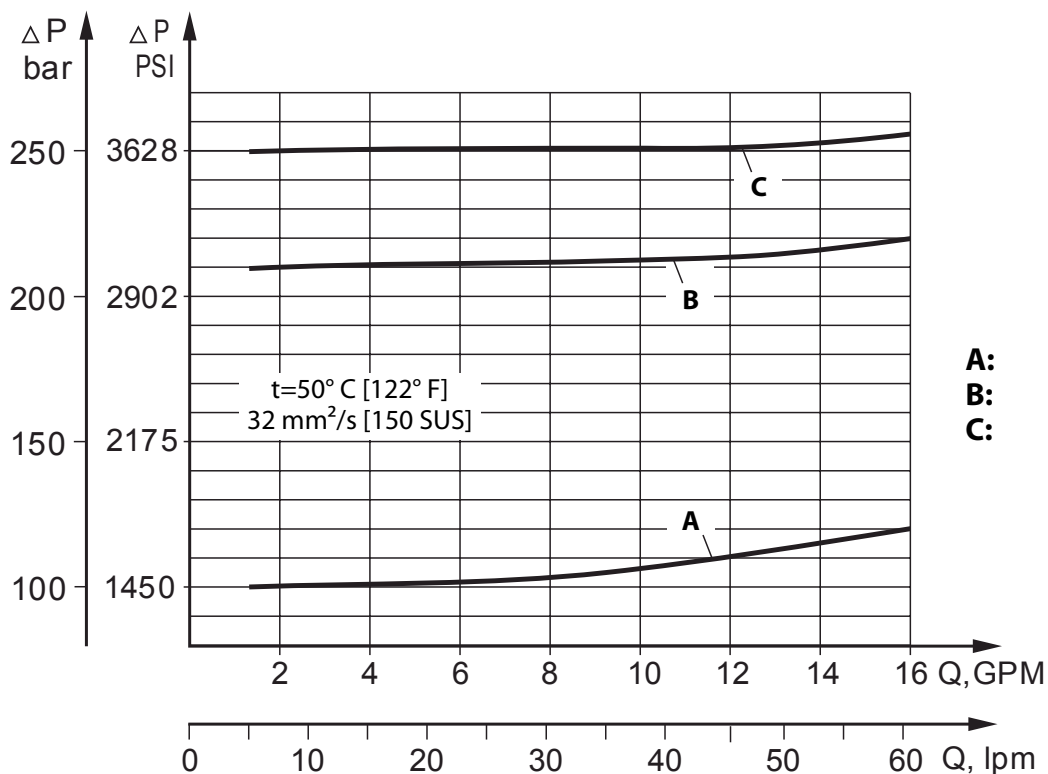
Pos. 4	Anschlüsse <i>Ports</i>
frei omit	BSPP (ISO 228)
M	Metrisch <i>metric</i> (ISO 262)
A	SAE (ANSI B 1.1 - 1982)
Pos. 5	Lackierung <i>Paint</i>
frei omit	Nicht lackiert <i>No paint</i>
P	Lackiert (Farbe auf Anfrage) <i>Paint (Colour on request)</i>
PC	Korrosionsschutzfarbe (Farbe auf Anfrage) <i>Corrosion protected paint (Colour on request)</i>
Pos. 6	Design Serie <i>Design series</i>
frei omit	Betriebsspezifisch <i>Factory specified</i>

Technische Daten Technical datas

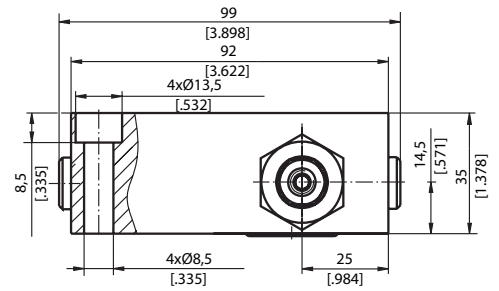
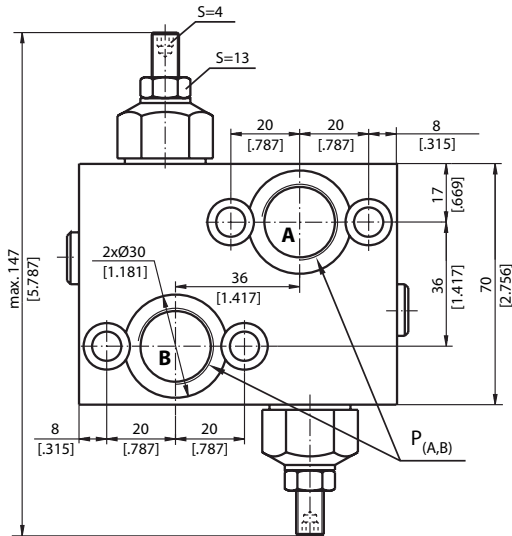
Parameter Parameters	Typ Type			
	KPER	KPDR	KPES	KPDS
Max. Ölstrom Flow rate l/min lpm [GPM]	60 [15.85]			
Druckeinstellbereich * Pressure range * bar [PSI]	30 - 100 ; 50 - 210 ; 80 - 300 [435 - 1450] ; [725 - 3050] ; [1160 - 4350]			
Gewicht Weight kg [lb]	1,55 [3.42]		1,50 [3.31]	

* Druckeinstellung bei 5 l/min [1.3 GPM] und einer Viskosität von 32 mm²/s [150 SUS] bei 50° C [122° F].
* Pressure setting at 5 lpm [1.3 GPM] and viscosity 32 mm²/s [150 SUS] at 50° C [122° F].

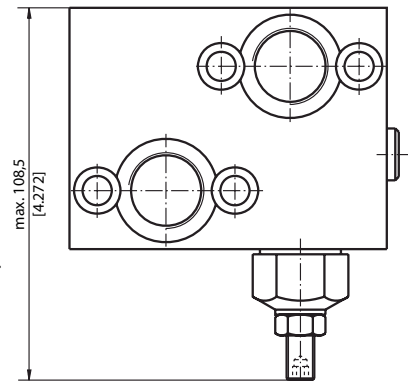
Nenndruck Rated pressure



Einbaumaße KPDR Dimensions KPDR



Einbaumaße KPER Dimensions KPER

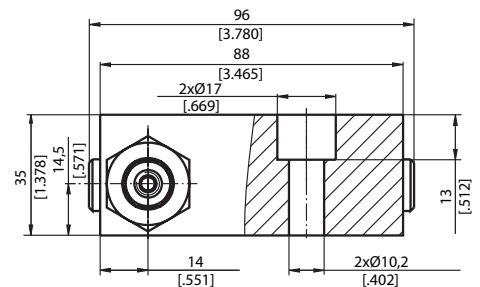
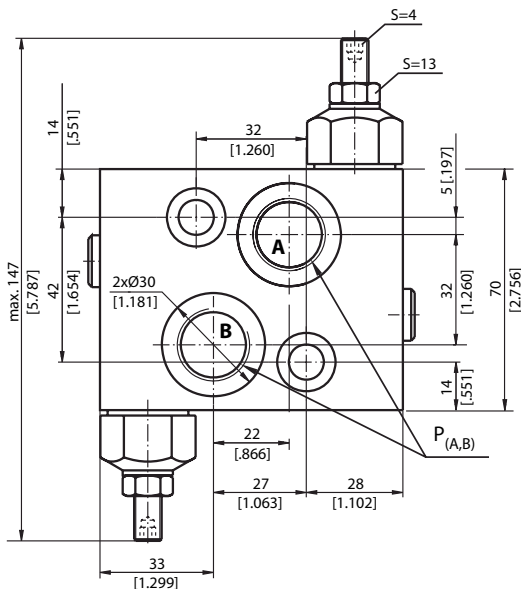


Anschlüsse Ports

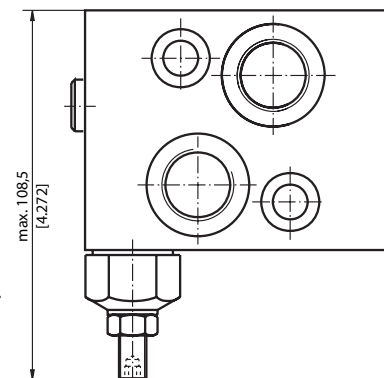
Option Option	P (A,B)
-	G1/2" 20 [0.79] tief deep
M	M22x1,5 20 [0.79] tief deep
A	7/8-14 UNF O-Ring 20 [0.79] tief deep

Die Ventilblöcke werden direkt auf den Motor aufgeflanscht.
Befestigungsschrauben: M8x35 - 8.8 DIN 912 oder 5/16-18 UNC, 1.5 lang
Anzugsmoment: 1,8 daNm [160 lb-in]
The valve blocks are installed directly on the motor.
Fastening screw: M8x35 - 8.8 DIN 912 or 5/16-18 UNC, 1.5 long
Tightening torque: 1.8 daNm [160 lb-in]

Einbaumaße KPDS Dimensions KPDS



Einbaumaße KPES Dimensions KPES



Anschlüsse Ports

Option Option	P (A,B)
-	G1/2" 20 [0.79] tief deep
M	M22x1,5 20 [0.79] tief deep
A	7/8-14 UNF O-Ring 20 [0.79] tief deep

Die Ventilblöcke werden direkt auf den Motor aufgeflanscht.
Befestigungsschrauben: M10x35 - 8.8 DIN 912 oder 3/8-16 UNC, 1.5 lang
Anzugsmoment: 3,5 daNm [310 lb-in]
The valve blocks are installed directly on the motor.
Fastening screw: M10x35 - 8.8 DIN 912 or 3/8-16 UNC, 1.5 long
Tightening torque: 3.5 daNm [310 lb-in]

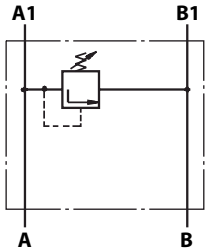


Schockventile KP ... W

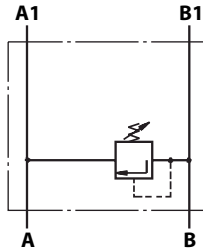
Crossover relief valve KP ... W

Schaltzeichen

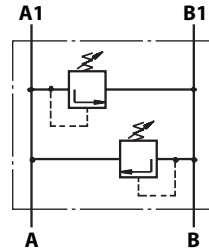
Graphic symbol



Einfachwirkendes Schockventil
Single crossover relief valve
Typ Type
KPEAW ...



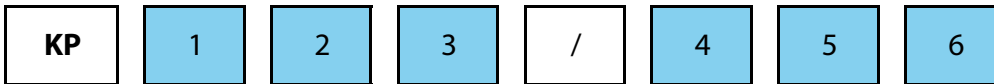
Einfachwirkendes Schockventil
Single crossover relief valve
Typ Type
KPEBW ...



Doppeltwirkendes Schockventil
Dual crossover relief valve
Typ Type
KPDW ...

Bestellcode KP ... W

Ordercode KP ... W



Pos. 1	Anzahl Ventile <i>Number of valves</i>
D	Zwei - Doppeltwirkend <i>Two - Dual</i>
EA	Eins in Leitung A - Einfachwirkend <i>One in line A - Single</i>
EB	Eins in Leitung B - Einfachwirkend <i>One in line B - Single</i>
Pos. 2	Gehäuse Typ <i>Housing type</i>
W	Ventilblock für EPRM-W und HW Motoren <i>Valve block for EPRM-W and HW motors</i>
Pos. 3	Druckeinstellbereich, bar [PSI] <i>Pressure range, bar [PSI]</i>
100	30-100 [435-1450] Standardeinstellung 100 bar @ 5 l/min <i>30-100 [435-1450] Standard setting 100 bar @ 5 lpm</i>
210	50-210 [725-3050] Standardeinstellung 210 bar @ 5 l/min <i>50-210 [725-3050] Standard setting 210 bar @ 5 lpm</i>
250	20-250 [290-3625] Standardeinstellung 250 bar @ 5 l/min <i>20-250 [290-3625] Standard setting 250 bar @ 5 lpm</i>

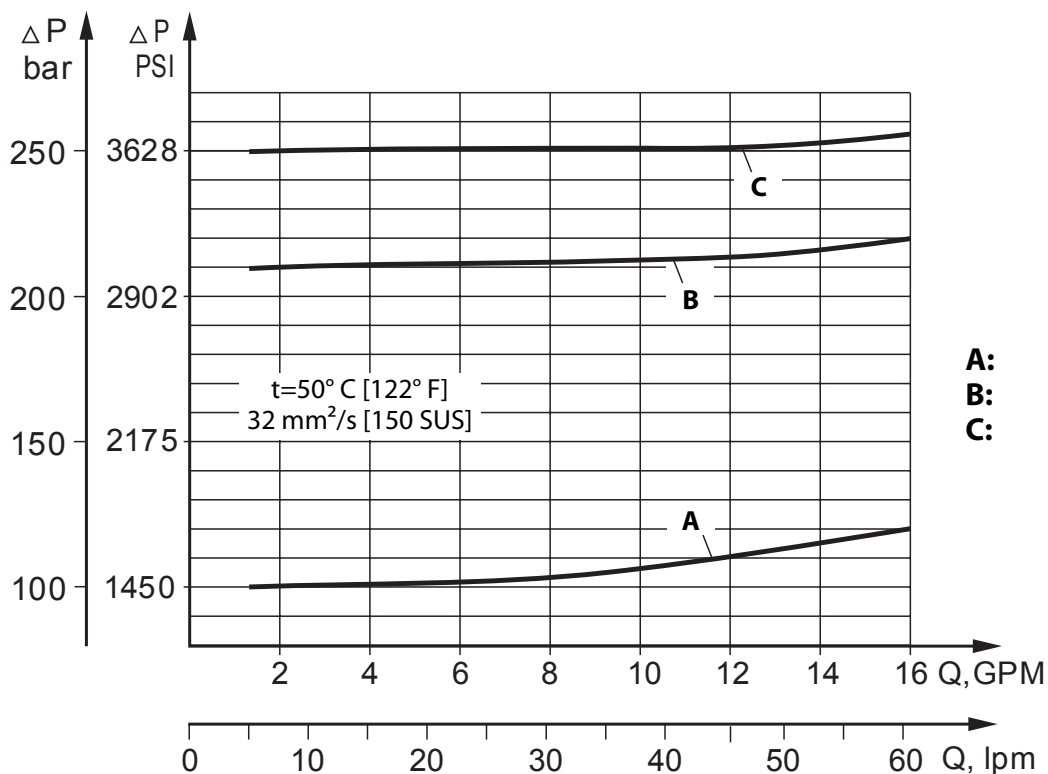
Pos. 4	Anschlüsse <i>Ports</i>
frei omit	BSPP (ISO 228)
M	Metrisch <i>metric</i> (ISO 262)
A	SAE (ANSI B 1.1 - 1982)
Pos. 5	Lackierung <i>Paint</i>
frei omit	Nicht lackiert <i>No paint</i>
P	Lackiert (Farbe auf Anfrage) <i>Paint (Colour on request)</i>
PC	Korrosionsschutzfarbe (Farbe auf Anfrage) <i>Corrosion protected paint (Colour on request)</i>
Pos. 6	Design Serie <i>Design series</i>
frei omit	Betriebsspezifisch <i>Factory specified</i>

Technische Daten Technical datas

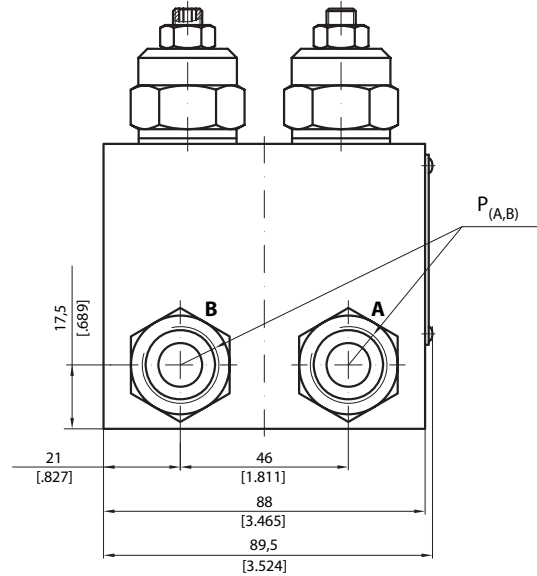
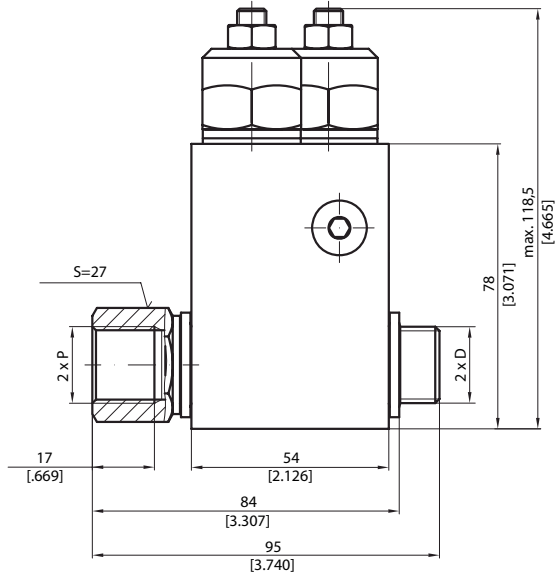
Parameter Parameters	Typ Type	
	KPE ... W	KPDW
Max. Ölstrom Flow rate l/min lpm [GPM]	60 [15.85]	
Druckeinstellbereich * Pressure range * bar [PSI]	5 - 40 ; 30 - 100 ; 80 - 250 [75 - 580] ; [435 - 1450] ; [1160 - 3625]	
Gewicht Weight kg [lb]	1,80 [3.97]	2,90 [6.39]

* Druckeinstellung bei 5 l/min [1.3 GPM] und einer Viskosität von 32 mm²/s [150 SUS] bei 50° C [122° F].
* Pressure setting at 5 lpm [1.3 GPM] and viscosity 32 mm²/s [150 SUS] at 50° C [122° F].

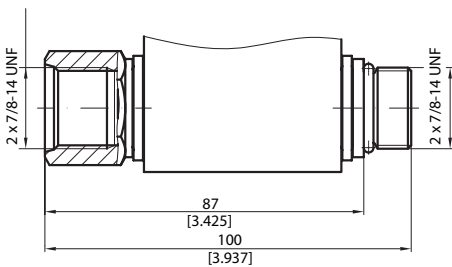
Nenndruck Rated pressure



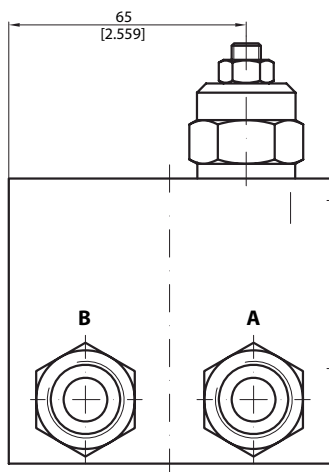
Einbaumaße KPDW ...
Dimensions KPDW ...



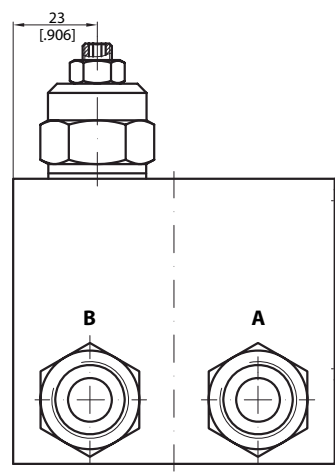
Einbaumaße KPDW-...A
Dimensions KPDW-...A



Einbaumaße KPEAW ...
Dimensions KPEAW ...



Einbaumaße KPEBW ...
Dimensions KPEBW ...



Anschlüsse Ports

Option Option	P _(A,B)	D
-	G1/2" 16 [.63] tief deep	G1/2" 12 [.47] tief deep
M	M22x1,5 16 [.63] tief deep	M22x1,5 12 [.47] tief deep
A	7/8-14 UNF O-Ring 16 [.63] tief deep	7/8-14 UNF O-Ring 13 [.51] tief deep



Die Ventilblöcke werden direkt auf den Motor aufgeflanscht.
 Die Schrauben (Gewinde D) liegen dem Ventil bei.
 Anzugsmoment: 8 daNm [710 lb-in]

The valve blocks are installed directly on the motor.
 The screws (thread D) are included in the valve set
 Tightening torque: 8 daNm [710 lb-in]

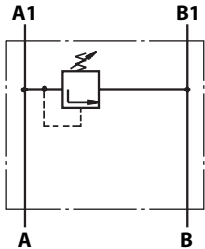
Schockventile KP ... T

Crossover relief valve KP ... T

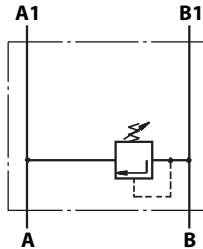


Schaltzeichen

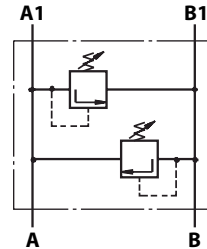
Graphic symbol



Einfachwirkendes Schockventil
Single crossover relief valve
Typ Type
KPEAT ...



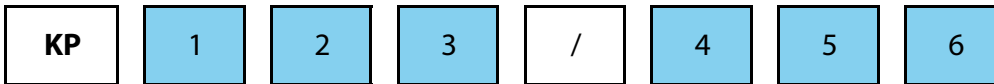
Einfachwirkendes Schockventil
Single crossover relief valve
Typ Type
KPEBT ...



Doppeltwirkendes Schockventil
Dual crossover relief valve
Typ Type
KPDT ...

Bestellcode KP ... T

Ordercode KP ... T



Pos. 1	Anzahl Ventile <i>Number of valves</i>
D	Zwei - Doppeltwirkend <i>Two - Dual</i>
EA	Eins in Leitung A - Einfachwirkend <i>One in line A - Single</i>
EB	Eins in Leitung B - Einfachwirkend <i>One in line B - Single</i>
Pos. 2	Gehäuse Typ <i>Housing type</i>
T	Ventilblock für EPMT Motoren <i>Valve block for EPMT motors</i>
Pos. 3	Druckeinstellbereich, bar [PSI] <i>Pressure range, bar [PSI]</i>
100	30-100 [435-1450] Standardeinstellung 100 bar @ 5 l/min <i>30-100 [435-1450] Standard setting 100 bar @ 5 lpm</i>
210	50-210 [725-3050] Standardeinstellung 210 bar @ 5 l/min <i>50-210 [725-3050] Standard setting 210 bar @ 5 lpm</i>
250	20-250 [290-3625] Standardeinstellung 250 bar @ 5 l/min <i>20-250 [290-3625] Standard setting 250 bar @ 5 lpm</i>

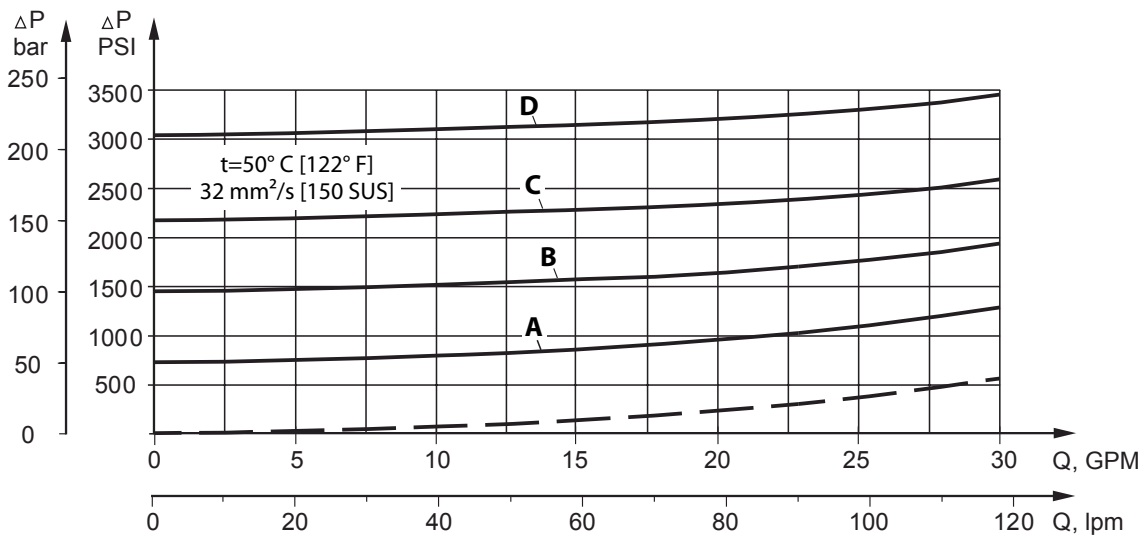
Pos. 4	Anschlüsse <i>Ports</i>
frei omit	BSPP (ISO 228)
M	Metrisch <i>metric</i> (ISO 262)
A	SAE (ANSI B 1.1 - 1982)
Pos. 5	Lackierung <i>Paint</i>
frei omit	Nicht lackiert <i>No paint</i>
P	Lackiert (Farbe auf Anfrage) <i>Paint (Colour on request)</i>
PC	Korrosionsschutzfarbe (Farbe auf Anfrage) <i>Corrosion protected paint (Colour on request)</i>
Pos. 6	Design Serie <i>Design series</i>
frei omit	Betriebsspezifisch <i>Factory specified</i>

Technische Daten Technical datas

Parameter Parameters	Typ Type	
	KPE ... T	KPDT
Max. Ölstrom Flow rate l/min lpm [GPM]	120 [32]	
Druckstellbereich * Pressure range * bar [PSI]	80 - 210 [1160 - 3050]	
Gewicht Weight kg [lb]	5,10 [11.24]	5,54 [12.21]

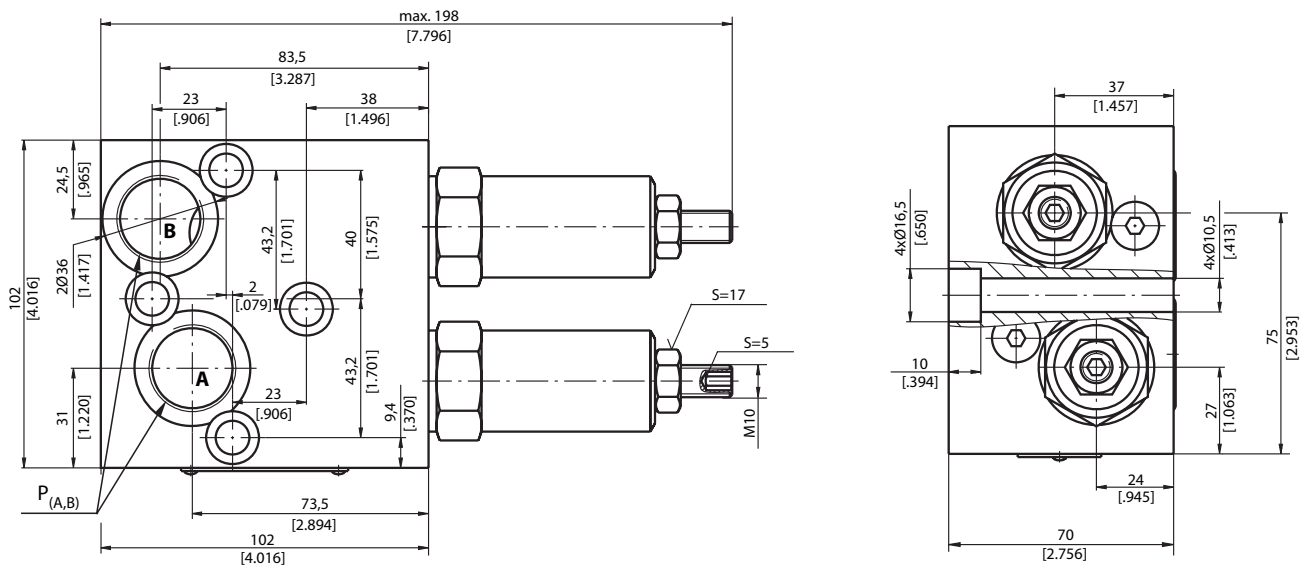
* Druckeinstellung bei 5 l/min [1.3 GPM] und einer Viskosität von 32 mm²/s [150 SUS] bei 50° C [122° F].
* Pressure setting at 5 lpm [1.3 GPM] and viscosity 32 mm²/s [150 SUS] at 50° C [122° F].

Nenndruck Rated pressure

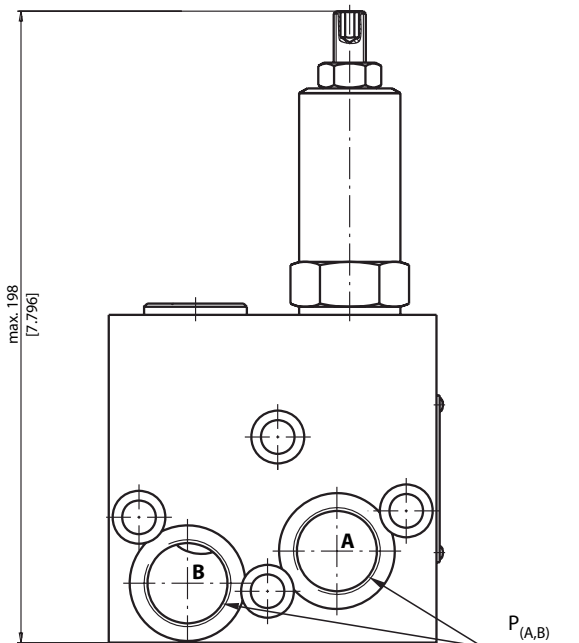


A: 50 bar [725 PSI]
B: 100 bar [1450 PSI]
C: 150 bar [2175 PSI]
D: 210 bar [3045 PSI]

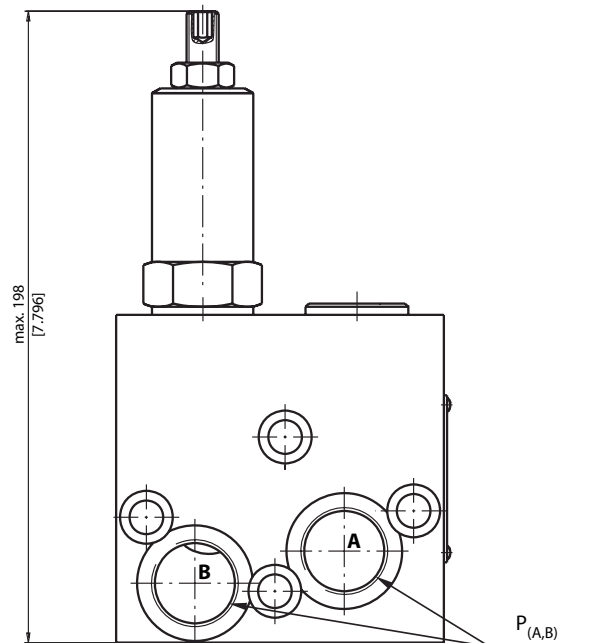
Einbaumaße KPDT ... Dimensions KPDT ...



Einbaumaße KPEAT ... Dimensions KPEAT ...



Einbaumaße KPEBT ... Dimensions KPEBT ...



Anschlüsse Ports

Option	P _(A,B)
-	G3/4" 20 [.79] tief deep
M	M27x2 20 [.79] tief deep
A	1 1/16-12 UN O-Ring 20 [.79] tief deep

Die Ventilblöcke werden direkt auf den Motor aufgeflanscht.
Befestigungsschrauben: M10x70 - 8.8 DIN 912
Anzugsmoment: 3,5 daNm [310 lb-in]

The valve blocks are installed directly on the motor.
Fastening screw: M10x70 - 8.8 DIN 912
Tightening torque: 3.5 daNm [310 lb-in]

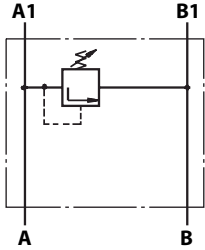


Schockventile KP ... V

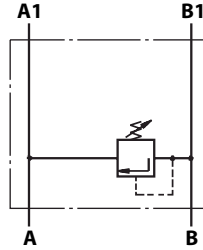
Crossover relief valve KP ... V

Schaltzeichen

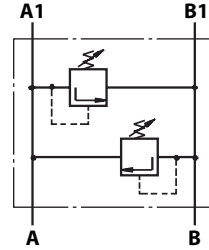
Graphic symbol



Einfachwirkendes Schockventil
Single crossover relief valve
Typ Type
KPEAV ...



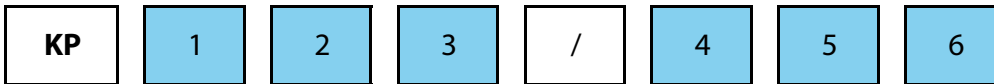
Einfachwirkendes Schockventil
Single crossover relief valve
Typ Type
KPEBV ...



Doppeltwirkendes Schockventil
Dual crossover relief valve
Typ Type
KPDV ...

Bestellcode KP ... V

Ordercode KP ... V



Pos. 1	Anzahl Ventile Number of valves
D	Zwei - Doppeltwirkend Two - Dual
EA	Eins in Leitung A - Einfachwirkend One in line A - Single
EB	Eins in Leitung B - Einfachwirkend One in line B - Single
Pos. 2	Gehäuse Typ Housing type
V	Ventilblock für EPMV Motoren Valve block for EPMV motors
Pos. 3	Druckeinstellbereich, bar [PSI] Pressure range, bar [PSI]
100	30-100 [435-1450] Standardeinstellung 100 bar @ 5 l/min 30-100 [435-1450] Standard setting 100 bar @ 5 lpm
210	50-210 [725-3050] Standardeinstellung 210 bar @ 5 l/min 50-210 [725-3050] Standard setting 210 bar @ 5 lpm
250	20-250 [290-3625] Standardeinstellung 250 bar @ 5 l/min 20-250 [290-3625] Standard setting 250 bar @ 5 lpm

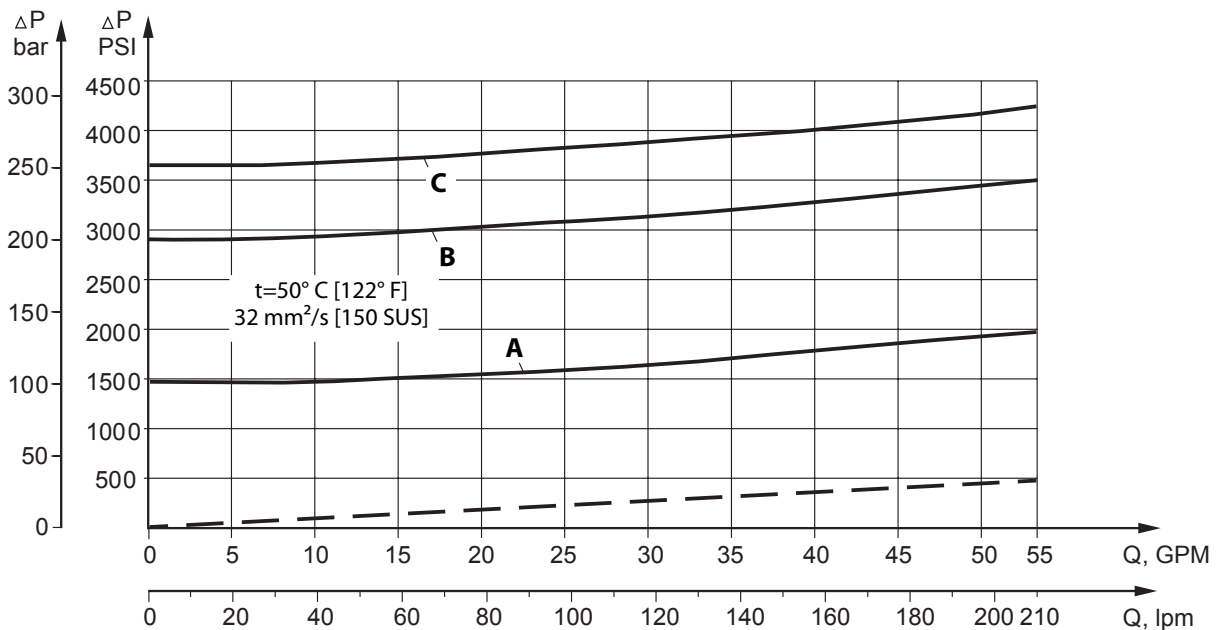
Pos. 4	Anschlüsse Ports
frei omit	BSPP (ISO 228)
M	Metrisch metric (ISO 262)
A	SAE (ANSI B 1.1 - 1982)
Pos. 5	Lackierung Paint
frei omit	Nicht lackiert No paint
P	Lackiert (Farbe auf Anfrage) Paint (Colour on request)
PC	Korrosionsschutzfarbe (Farbe auf Anfrage) Corrosion protected paint (Colour on request)
Pos. 6	Design Serie Design series
frei omit	Betriebsspezifisch Factory specified

Technische Daten Technical datas

Parameter Parameters	Typ Type		
	KPEAV	KPEBV	KPDV
Max. Ölstrom Flow rate l/min lpm [GPM]	200 [53]		
Druckeinstellbereich * Pressure range * bar [PSI]	10 - 100 ; 20 - 250 [145 - 1450] ; [290 - 3625]		
Gewicht Weight kg [lb]	4,90 [10.80]	7,10 [15.65]	8,00 [17.64]

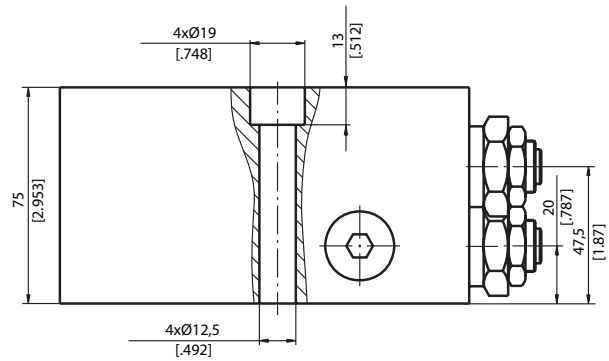
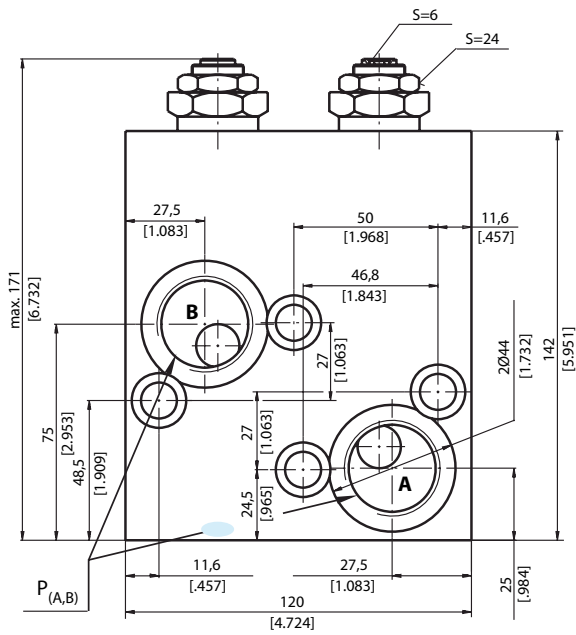
* Druckeinstellung bei 5 l/min [1.3 GPM] und einer Viskosität von 32 mm²/s [150 SUS] bei 50° C [122° F].
* Pressure setting at 5 lpm [1.3 GPM] and viscosity 32 mm²/s [150 SUS] at 50° C [122° F].

Nenndruck Rated pressure



A: 100 bar [1450 PSI]
B: 200 bar [2900 PSI]
C: 250 bar [3625 PSI]

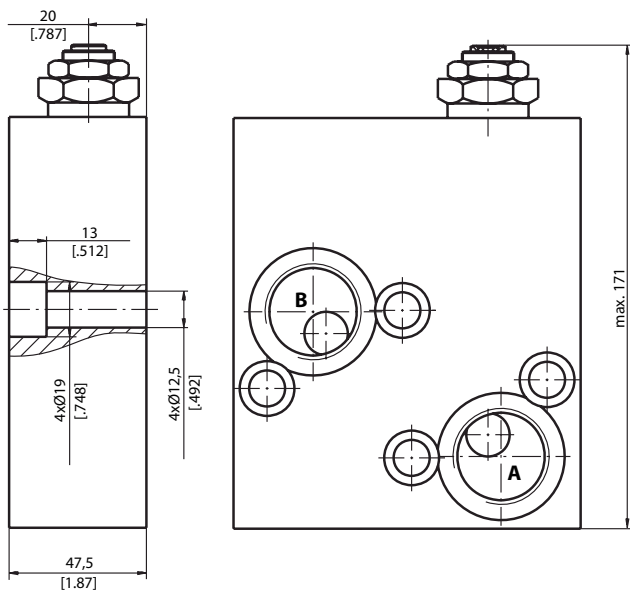
Einbaumaße KP DV ... Dimensions KP DV ...



Die Ventilblöcke werden direkt auf den Motor aufgef lanscht.
Befestigungsschrauben: M12x75 - 8.8 DIN 912
Anzugsmoment: 7,5 daNm [665 lb-in]

The valve blocks are installed directly on the motor.
Fastening screw: M12x75 - 8.8 DIN 912
Tightening torque: 7.5 daNm [665 lb-in]

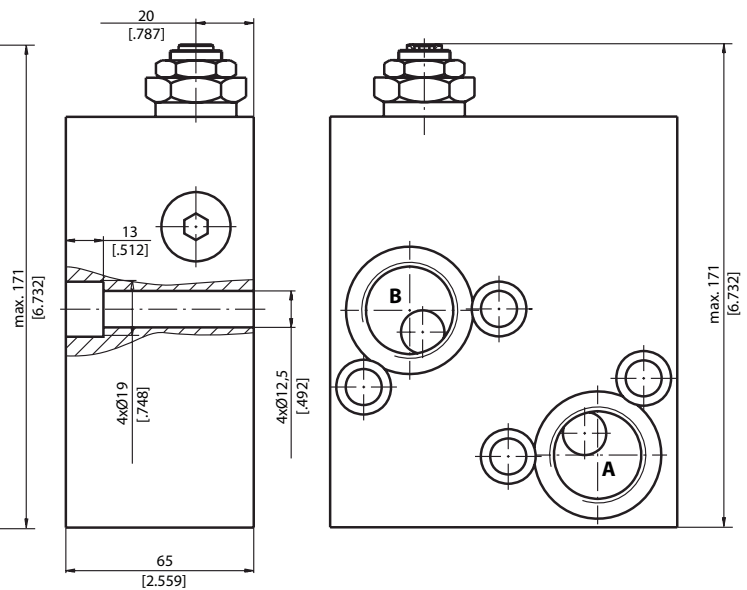
Einbaumaße KPEAV ... Dimensions KPEAV ...



Die Ventilblöcke werden direkt auf den Motor aufgef lanscht.
Befestigungsschrauben: M12x50 - 8.8 DIN 912
Anzugsmoment: 7,5 daNm [665 lb-in]

The valve blocks are installed directly on the motor.
Fastening screw: M12x50 - 8.8 DIN 912
Tightening torque: 7.5 daNm [665 lb-in]

Einbaumaße KPEBV ... Dimensions KPEBV ...



Die Ventilblöcke werden direkt auf den Motor aufgef lanscht.
Befestigungsschrauben: M12x65 - 8.8 DIN 912
Anzugsmoment: 7,5 daNm [665 lb-in]

The valve blocks are installed directly on the motor.
Fastening screw: M12x65 - 8.8 DIN 912
Tightening torque: 7.5 daNm [665 lb-in]

Anschlüsse Ports

Option	P (A,B)
-	G1" 20 [0.79] tief deep
M	M33x2 20 [0.79] tief deep
A	1 5/16-12 UN O-Ring 20 [0.79] tief deep



Abschaltventil ASV ... Shut-off valve ASV ...



Technische Daten

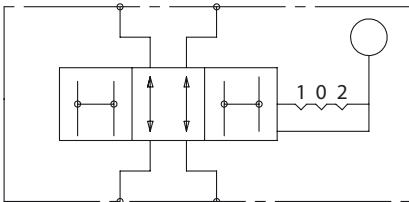
Technical datas

Modell: Flanschbar auf EPM / EPRM, EPMS
 Gehäuse: Guss - GG25
 Max. Betriebsdruck: 250 bar
 Max. Ölstrom: 60 l/min

Model: Flangeable on EPM / EPRM, EPMS
 Housing: Cast iron - GG25
 Max. working pressure: 250 bar
 Max. Oil flow: 60 lpm

Schaltzeichen

Graphic symbol



Bestellcode ASV

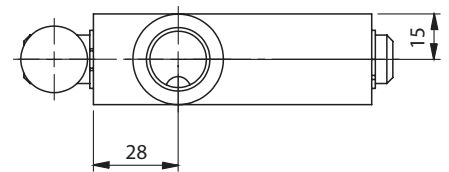
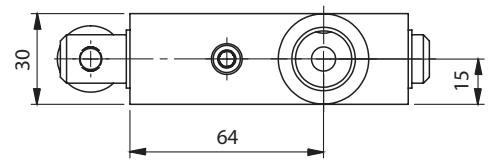
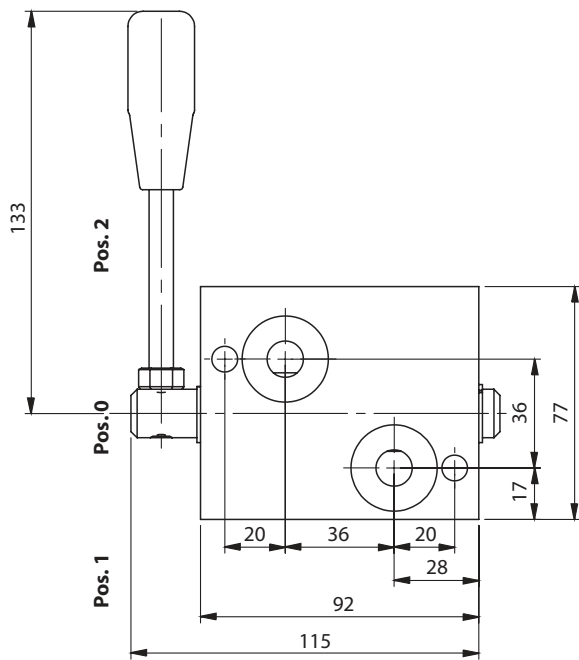
Ordercode ASV



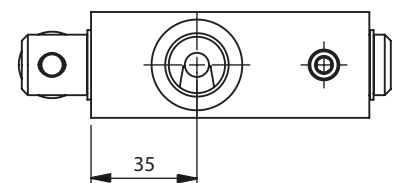
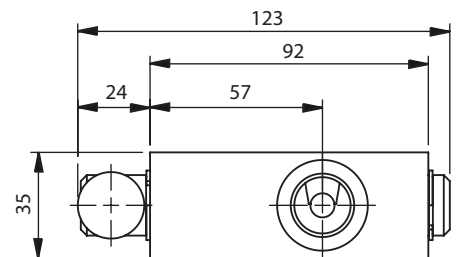
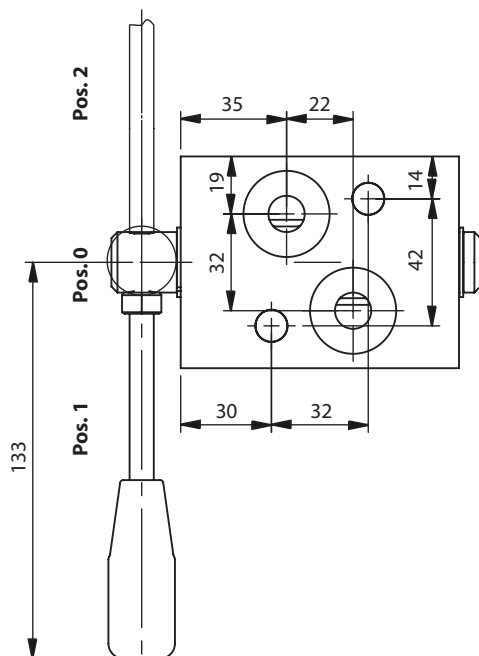
Pos. 1	Flanschbar auf Flangeable on
P / R	EPM /EPRM Motoren EPM /EPRM Motors
S	EPMS Motoren EPMS Motors

Pos. 2	Anschlüsse Connections
G	G 1/2"
M	M22x1,5
U	7/8-14 UNF

Einbaumaße ASV/P/R Dimensions ASV/P/R



Einbaumaße ASV/S Dimensions ASV/S



Umschaltventil BD ... 01 ...

Reversing valve BD ... 01 ...



Technische Daten

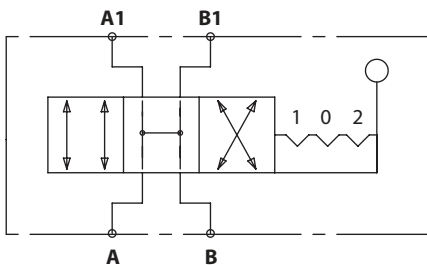
Technical datas

Modell: Flanschbar auf EPM / EPRM, EPMS
 Gehäuse: Guss - GG25
 Max. Betriebsdruck: 250 bar
 Max. Ölstrom: 60 l/min

Model: Flangeable on EPM / EPRM, EPMS
 Housing: Cast iron - GG25
 Max. working pressure: 250 bar
 Max. Oil flow: 60 lpm

Schaltzeichen

Graphic symbol



Bestellcode BD

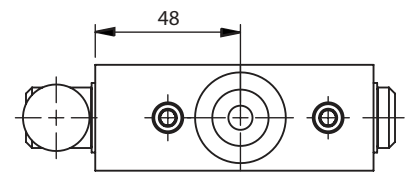
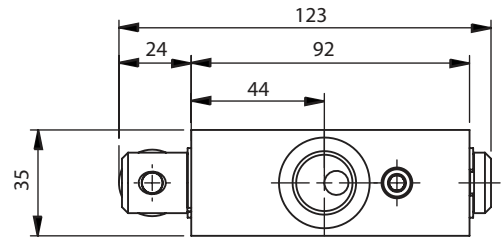
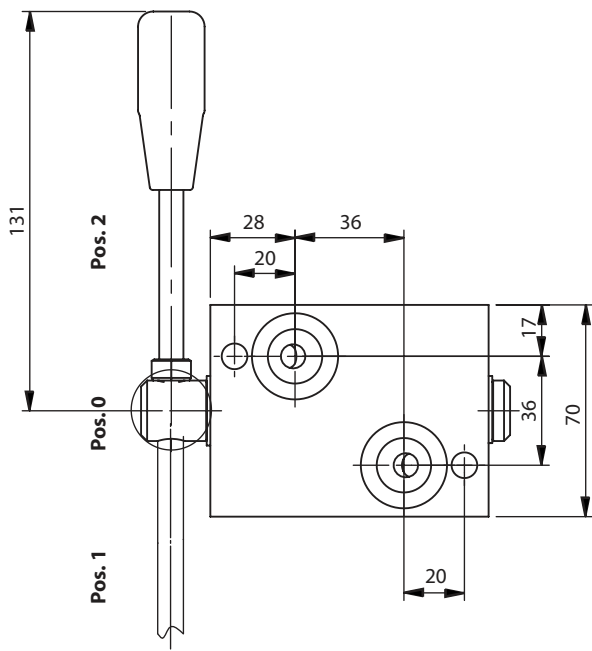
Ordercode BD



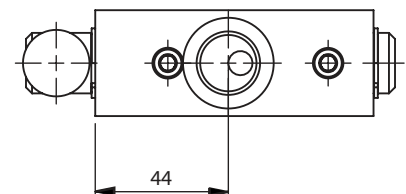
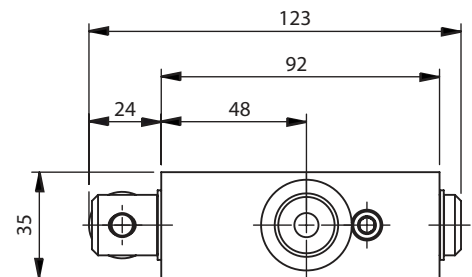
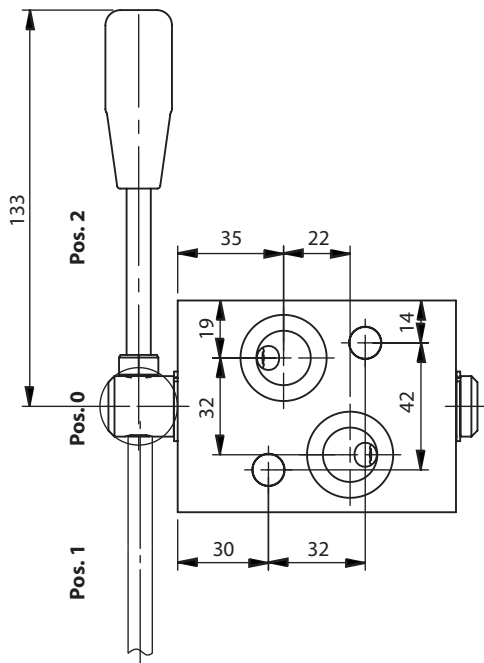
Pos. 1	Flanschbar auf <i>Flangeable on</i>
R	EPM /EPRM Motoren <i>EPM /EPRM Motors</i>
S	EPMS Motoren <i>EPMS Motors</i>

Pos. 2	Anschlüsse <i>Connections</i>
12	G 1/2"
38	G 3/8"
M	M22x1,5
U	7/8-14 UNF

Einbaumaße BDR ... 01
Dimensions BDR ... 01



Einbaumaße BDS ... 01
Dimensions BDS ... 01



Umschaltventil BD ... 02 ...

Reversing valve BD ... 02 ...



Technische Daten

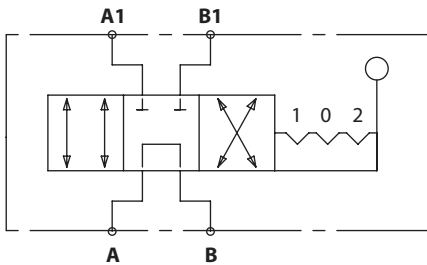
Technical datas

Modell: Flanschbar auf EPM / EPRM, EPMS
 Gehäuse: Guss - GG25
 Max. Betriebsdruck: 250 bar
 Max. Ölstrom: 60 l/min

Model: Flangeable on EPM / EPRM, EPMS
 Housing: Cast iron - GG25
 Max. working pressure: 250 bar
 Max. Oil flow: 60 lpm

Schaltzeichen

Graphic symbol



Bestellcode BD

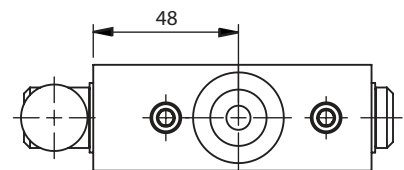
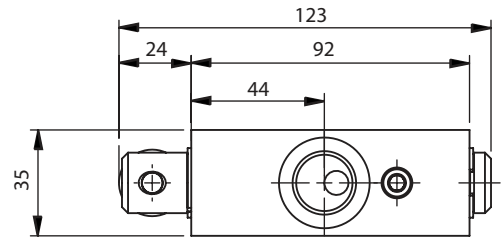
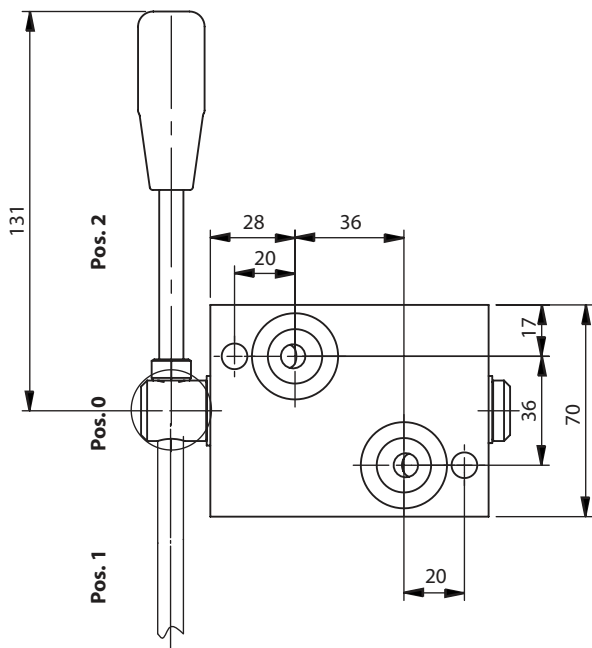
Ordercode BD



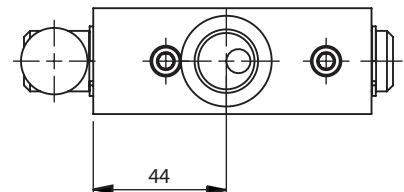
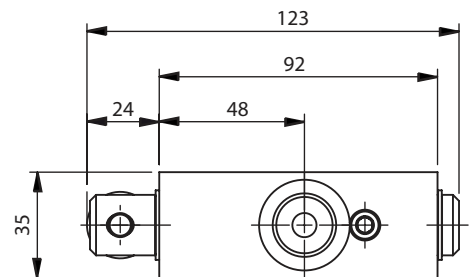
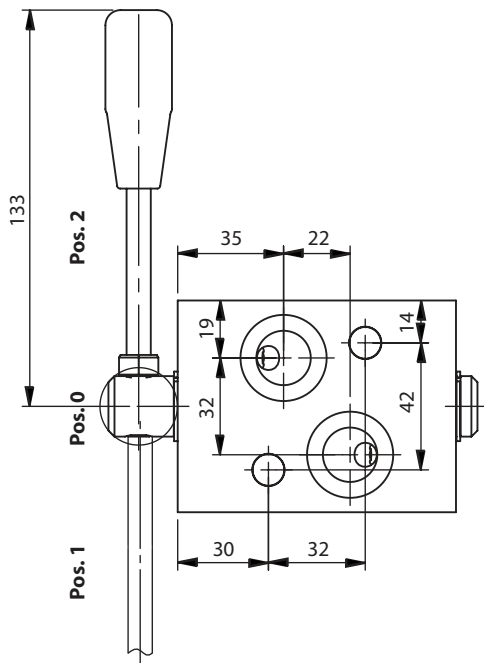
Pos. 1	Flanschbar auf <i>Flangeable on</i>
R	EPM /EPRM Motoren <i>EPM /EPRM Motors</i>
S	EPMS Motoren <i>EPMS Motors</i>

Pos. 2	Anschlüsse <i>Connections</i>
12	G 1/2"
38	G 3/8"
M	M22x1,5
U	7/8-14 UNF

Einbaumaße BDR ... 02
Dimensions BDR ... 02



Einbaumaße BDS ... 02
Dimensions BDS ... 02



Umschaltventil BD ... 04 ...

Reversing valve BD ... 04 ...



Technische Daten

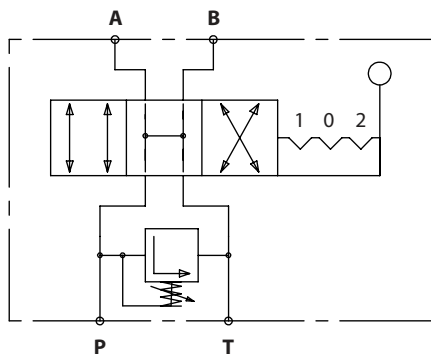
Technical datas

Modell: Flanschbar auf EPM / EPRM, EPMS
 Gehäuse: Guss - GG25
 Max. Betriebsdruck: 250 bar
 Max. Ölstrom: 60 l/min
 Druckbegrenzungsventil integriert

Model: Flangeable on EPM / EPRM, EPMS
 Housing: Cast iron - GG25
 Max. working pressure: 250 bar
 Max. Oil flow: 60 lpm
 Pressure relief valve integrated

Schaltzeichen

Graphic symbol



Bestellcode BD

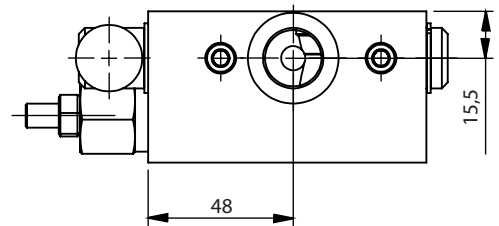
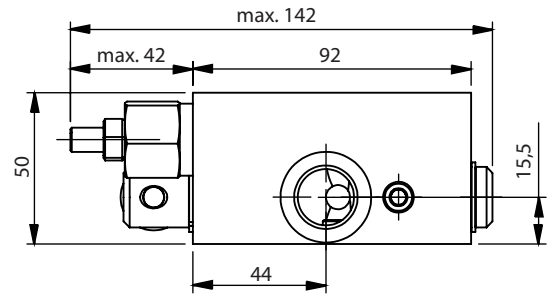
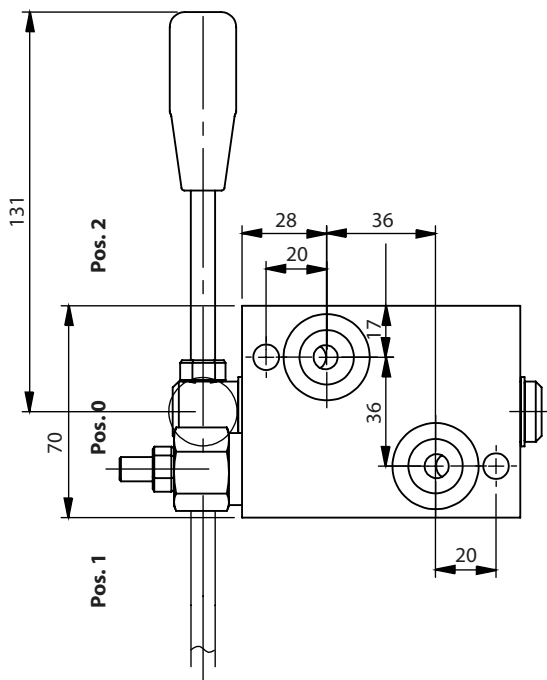
Ordercode BD



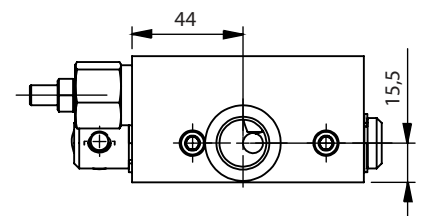
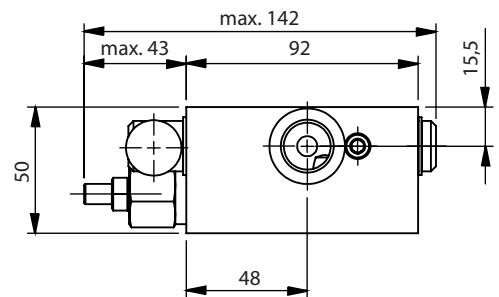
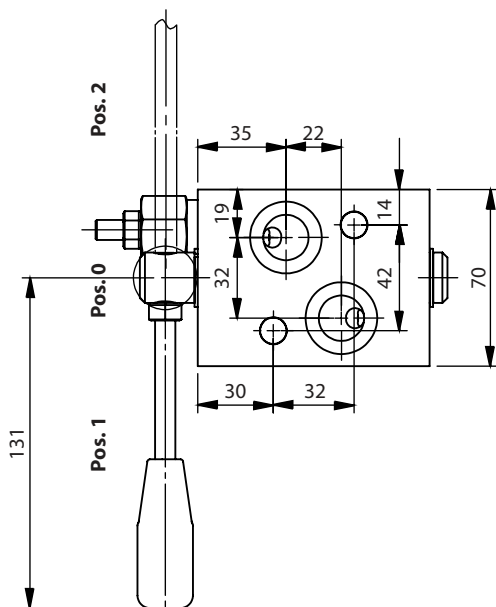
Pos. 1	Flanschbar auf <i>Flangable on</i>
R	EPM /EPRM Motoren <i>EPM / EPRM Motors</i>
S	EPMS Motoren <i>EPMS Motors</i>

Pos. 2	Anschlüsse <i>Connections</i>
12	G 1/2"
38	G 3/8"
M	M22x1,5
U	7/8-14 UNF

Einbaumaße BDR ... 04
Dimensions BDR ... 04



Einbaumaße BDS ... 04
Dimensions BDS ... 04



Umschaltventil BD ... 05 ...

Reversing valve BD ... 05 ...



Technische Daten

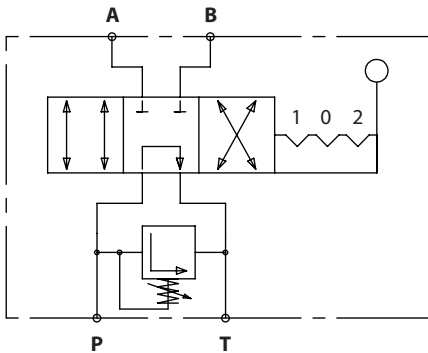
Technical datas

Modell: Flanschbar auf EPM / EPRM, EPMS
 Gehäuse: Guss - GG25
 Max. Betriebsdruck: 250 bar
 Max. Ölstrom: 60 l/min
 Druckbegrenzungsventil integriert

Model: Flangeable on EPM / EPRM, EPMS
 Housing: Cast iron - GG25
 Max. working pressure: 250 bar
 Max. Oil flow: 60 lpm
 Pressure relief valve integrated

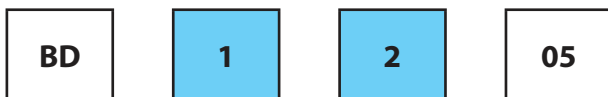
Schaltzeichen

Graphic symbol



Bestellcode BD

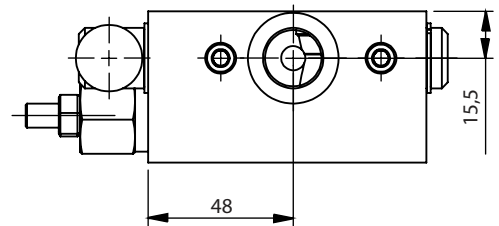
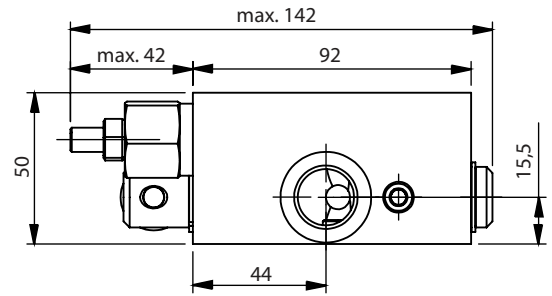
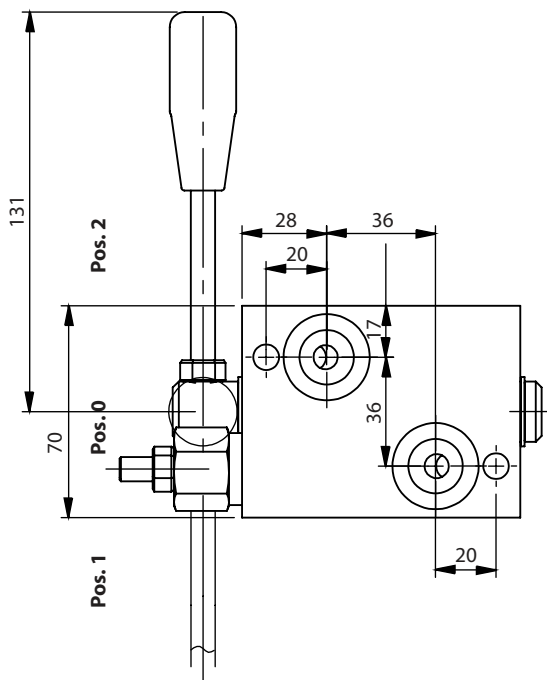
Ordercode BD



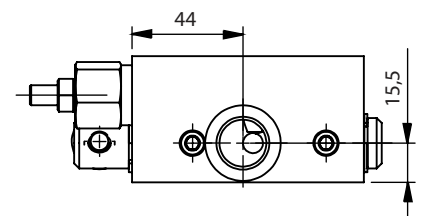
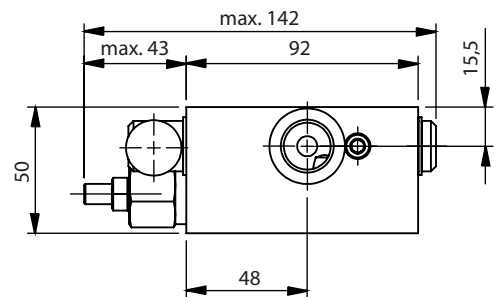
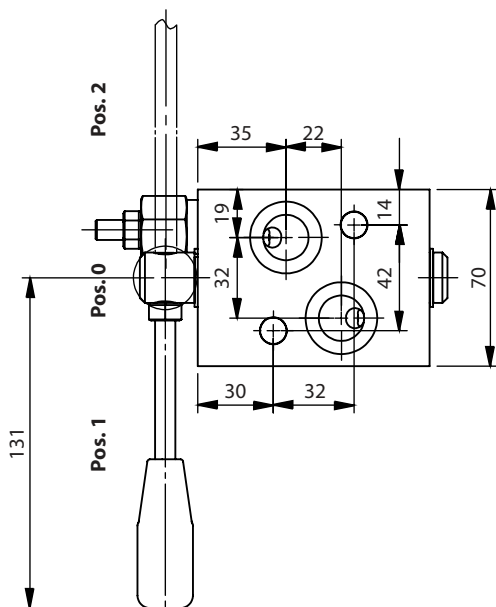
Pos. 1	Flanschbar auf Flangable on
R	EPM /EPRM Motoren EPM /EPRM Motors
S	EPMS Motoren EPMS Motors

Pos. 2	Anschlüsse Connections
12	G 1/2"
38	G 3/8"
M	M22x1,5
U	7/8-14 UNF

Einbaumaße BDR ... 05
Dimensions BDR ... 05



Einbaumaße BDS ... 05
Dimensions BDS ... 05



Drosselventil BV ... 01 ...

Throttle valve BV ... 01 ...



Technische Daten

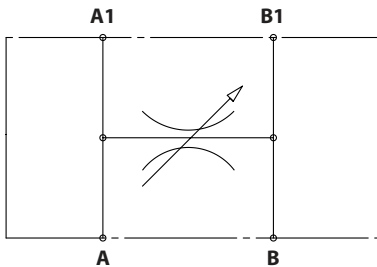
Technical datas

Modell: Flanschbar auf EPM / EPRM, EPMS
 Gehäuse: Aluminium
 Max. Betriebsdruck: 250 bar
 Max. Ölstrom: 60 l/min

Model: Flangeable on EPM / EPRM, EPMS
 Housing: Aluminium
 Max. working pressure: 250 bar
 Max. Oil flow: 60 lpm

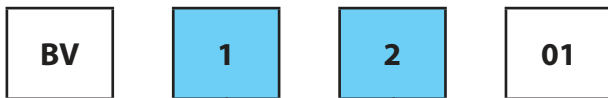
Schaltzeichen

Graphic symbol



Bestellcode BV

Ordercode BV

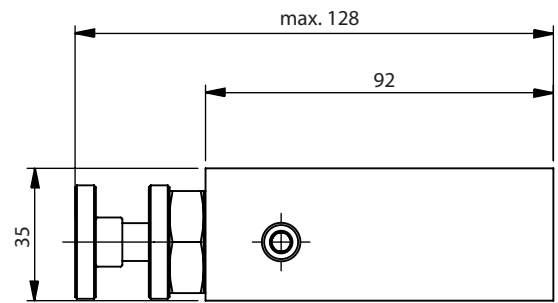
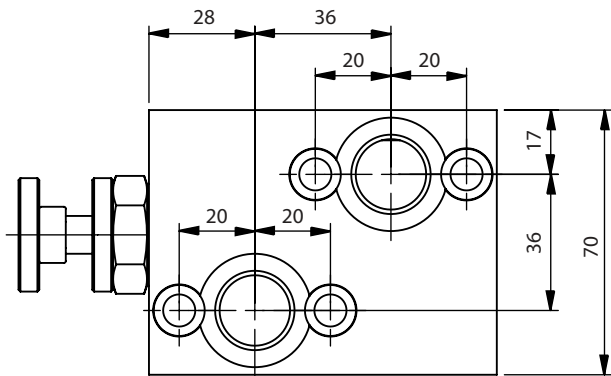


Pos. 1	Flanschbar auf <i>Flangeable on</i>
R	EPM /EPRM Motoren <i>EPM /EPRM Motors</i>
S	EPMS Motoren <i>EPMS Motors</i>

Pos. 2	Anschlüsse <i>Connections</i>
12	G 1/2"
38	G 3/8"
M	M22x1,5
U	7/8-14 UNF

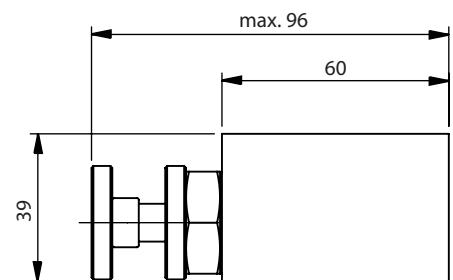
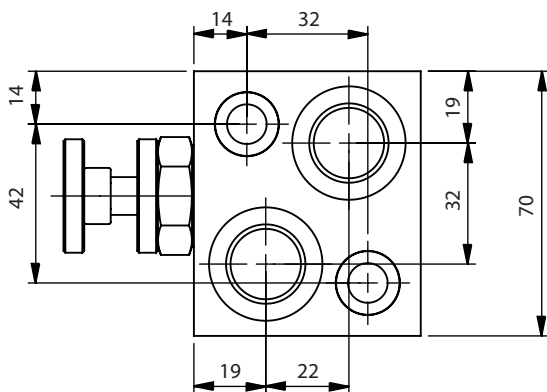
Einbaumaße BVR ... 01

Dimensions BVR ... 01



Einbaumaße BVS ... 01

Dimensions BVS ... 01



Drosselrückschlagventil BV ... 02 ...

Throttle check valve BV ... 02 ...



Technische Daten

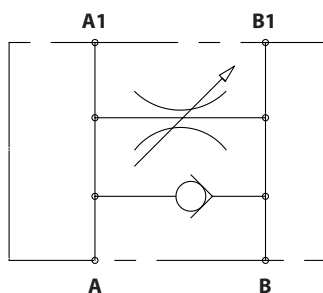
Technical datas

Modell: Flanschbar auf EPM / EPRM, EPMS
 Gehäuse: Aluminium
 Max. Betriebsdruck: 250 bar
 Max. Ölstrom: 60 l/min

Model: Flangeable on EPM / EPRM, EPMS
 Housing: Aluminium
 Max. working pressure: 250 bar
 Max. Oil flow: 60 lpm

Schaltzeichen

Graphic symbol



Bestellcode BV

Ordercode BV

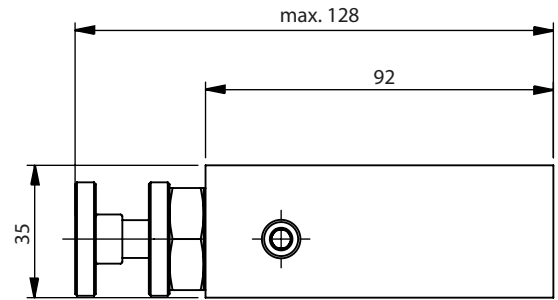
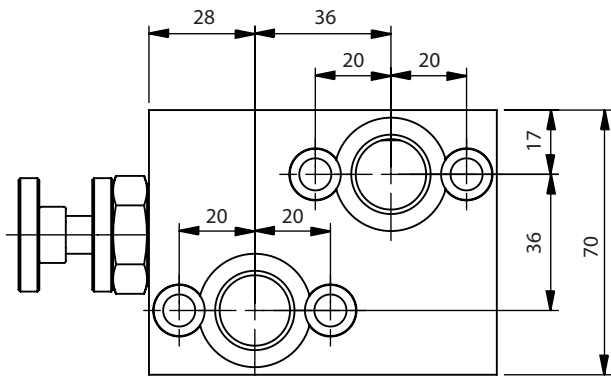


Pos. 1	Flanschbar auf <i>Flangeable on</i>
R	EPM /EPRM Motoren <i>EPM /EPRM Motors</i>
S	EPMS Motoren <i>EPMS Motors</i>

Pos. 2	Anschlüsse <i>Connections</i>
12	G 1/2"
38	G 3/8"
M	M22x1,5
U	7/8-14 UNF

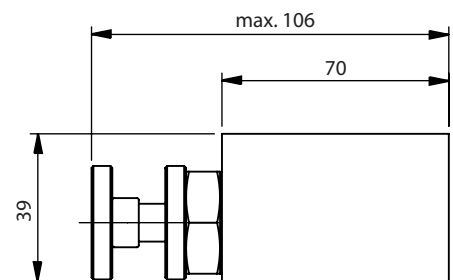
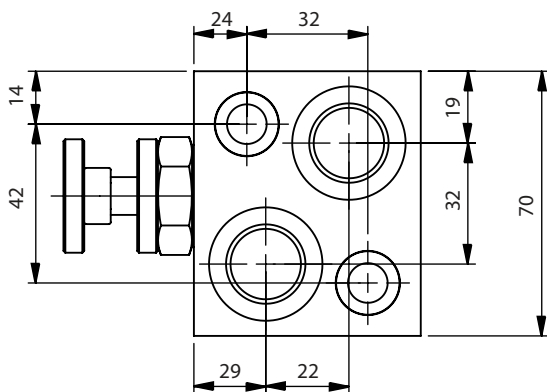
Einbaumaße BVR ... 02

Dimensions BVR ... 02



Einbaumaße BVS ... 02

Dimensions BVS ... 02



3-Wege Stromregelventil BV ... 05 ...

3-way flow control valve BV ... 05 ...



Technische Daten

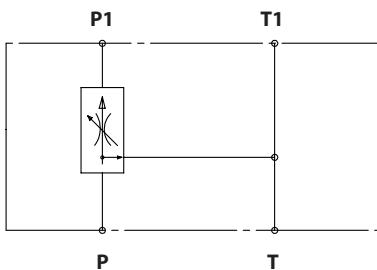
Technical datas

Modell: Flanschbar auf EPM / EPRM, EPMS
 Gehäuse: Aluminium
 Max. Betriebsdruck: 250 bar
 Max. Ölstrom: 90 l/min
 Regelbereich: 1 - 65 l/min

Model: Flangeable on EPM / EPRM, EPMS
 Housing: Aluminium
 Max. working pressure: 250 bar
 Max. Oil flow: 90 lpm
 Control range: 1 - 65 lpm

Schaltzeichen

Graphic symbol



Bestellcode BV

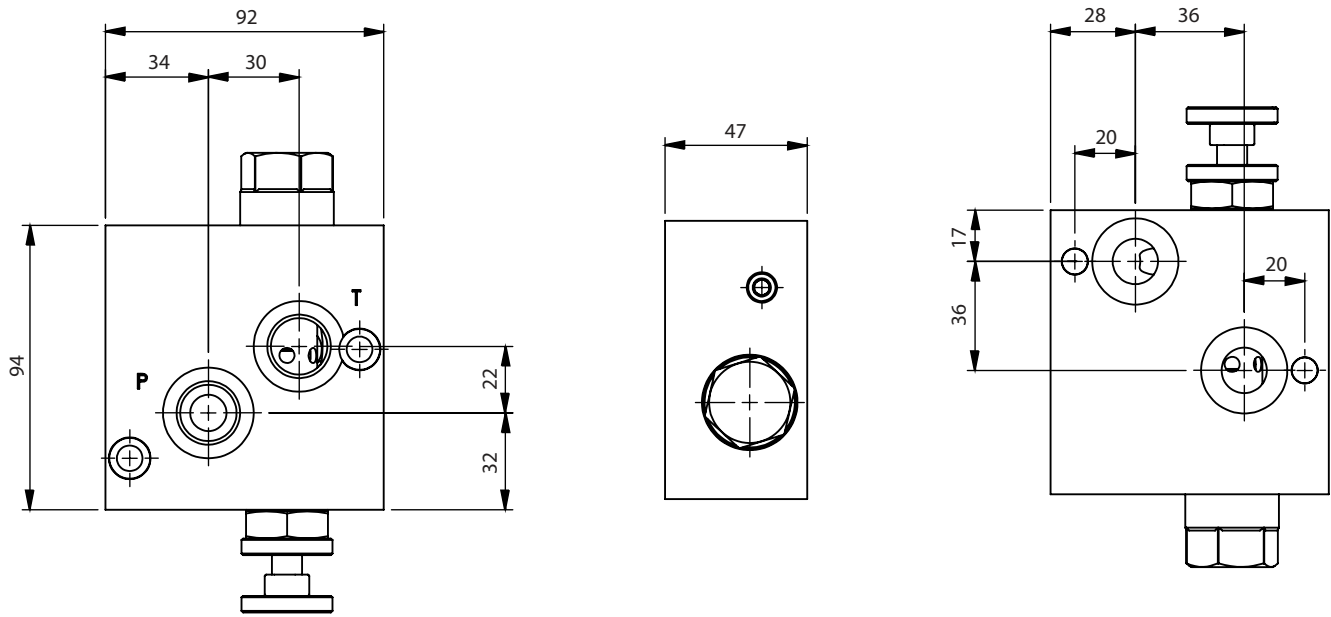
Ordercode BV



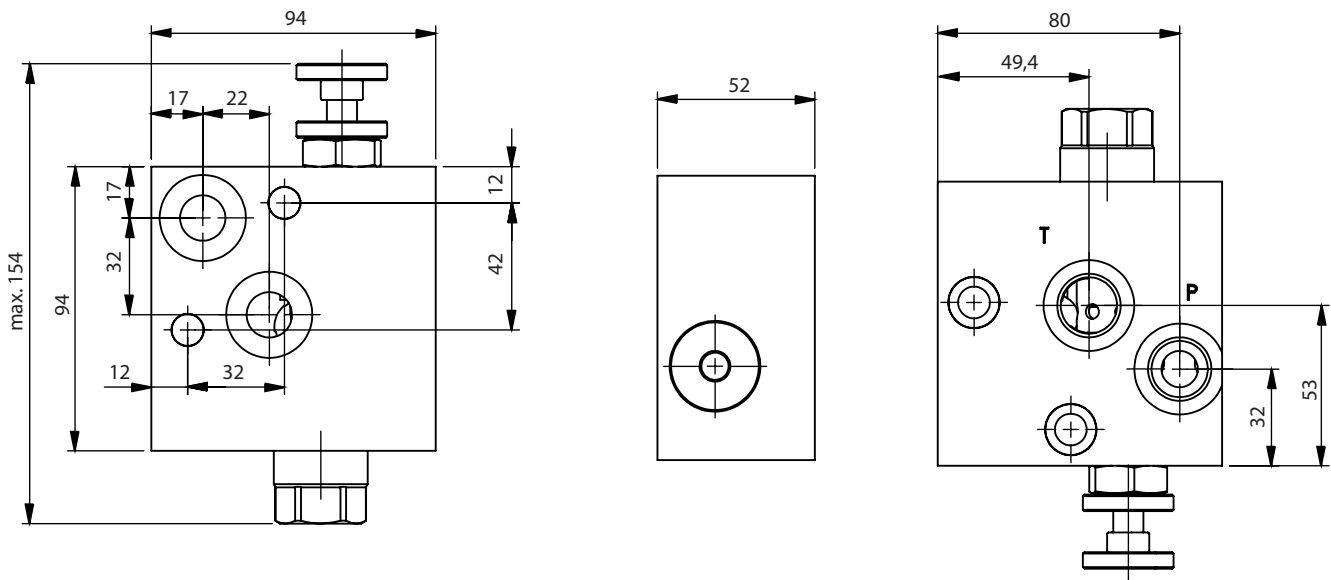
Pos. 1	Flanschbar auf <i>Flangeable on</i>
R	EPM /EPRM Motoren <i>EPM /EPRM Motors</i>
S	EPMS Motoren <i>EPMS Motors</i>

Pos. 2	Anschlüsse <i>Connections</i>
12	G 1/2"
38	G 3/8"
M	M22x1,5
U	7/8-14 UNF

Einbaumaße BVR ... 05
Dimensions BVR ... 05



Einbaumaße BVS ... 05
Dimensions BVS ... 05



3-Wege Stromregelventil 3RD-R+DBV

3-way flow control valve 3RD-R+DBV

Technische Daten

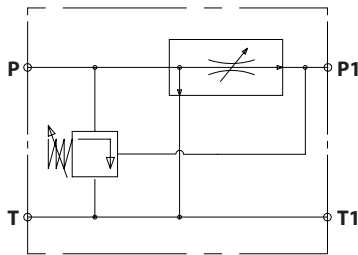
Technical datas

Modell: Flanschbar auf EPM / EPRM
 Gehäuse: Aluminium
 Max. Betriebsdruck: 250 bar
 Max. Ölstrom: 90 l/min
 Regelbereich: 1 - 65 l/min
 Anschlüsse: G1/2"

Model: Flangeable on EPM / EPRM
 Housing: Aluminium
 Max. working pressure: 250 bar
 Max. Oil flow: 90 lpm
 Control range: 1 - 65 lpm
 Connections: G1/2"

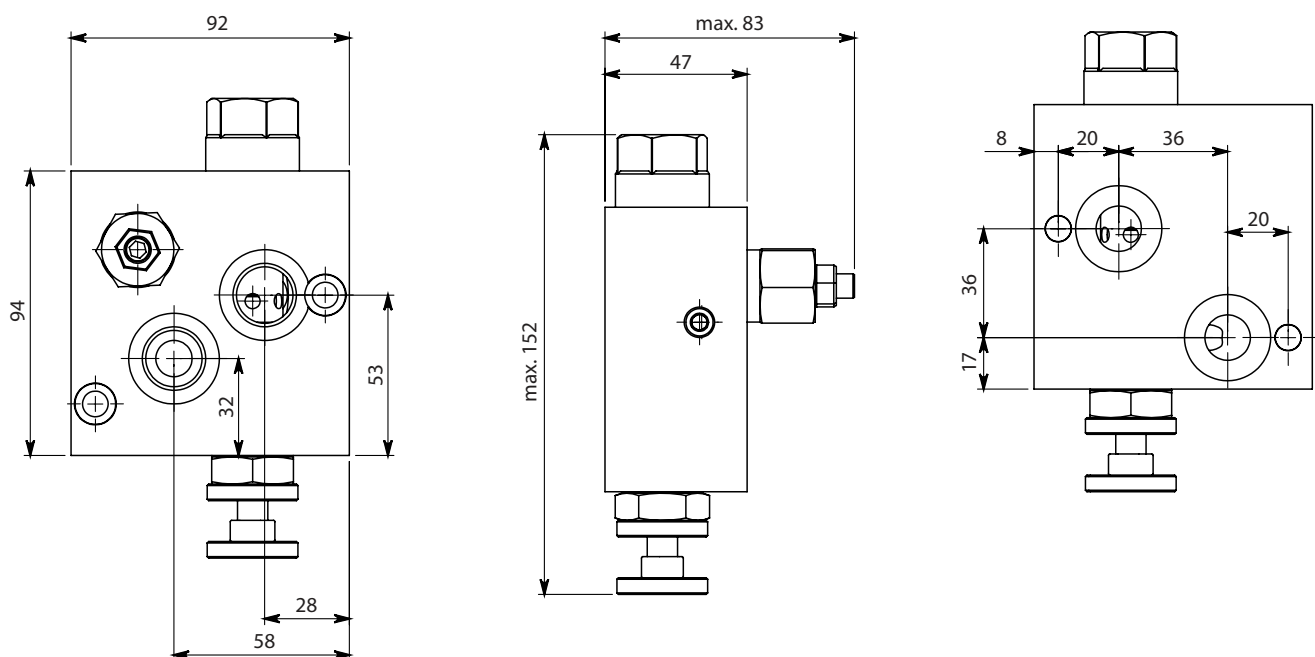
Schaltzeichen

Graphic symbol



Einbaumaße 3RD-R+DBV

Dimensions 3RD-R+DBV



Nachsaugrückschlagventil BV ... 12 ...

Cavitation valve BV ... 12 ...

Technische Daten

Technical datas

Modell: Flanschbar auf EPM / EPRM, EPMS

Gehäuse: Aluminium

Max. Betriebsdruck: 250 bar

Max. Ölstrom: 60 l/min

Model: Flangeable on EPM / EPRM, EPMS

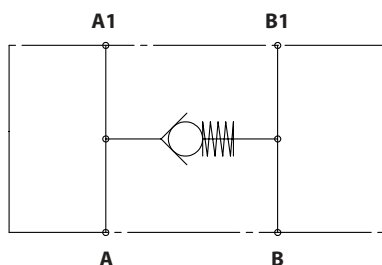
Housing: Aluminium

Max. working pressure: 250 bar

Max. Oil flow: 60 lpm

Schaltzeichen

Graphic symbol



Bestellcode BV

Ordercode BV

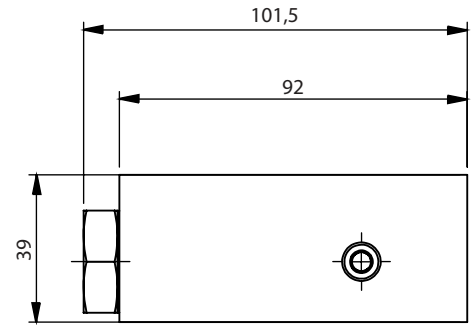
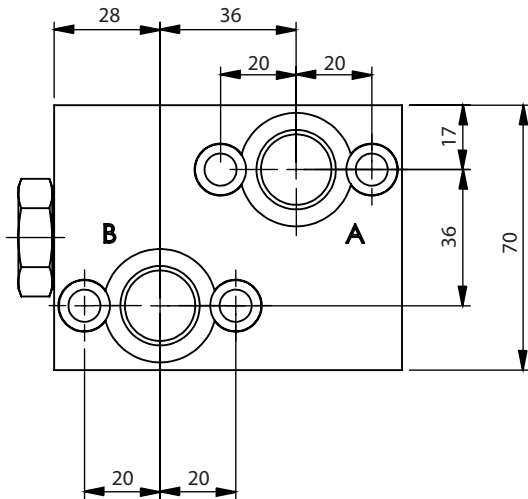


Pos. 1	Flanschbar auf <i>Flangeable on</i>
R	EPM /EPRM Motoren <i>EPM /EPRM Motors</i>
S	EPMS Motoren <i>EPMS Motors</i>

Pos. 2	Anschlüsse <i>Connections</i>
12	G 1/2"
38	G 3/8"
M	M22x1,5
U	7/8-14 UNF

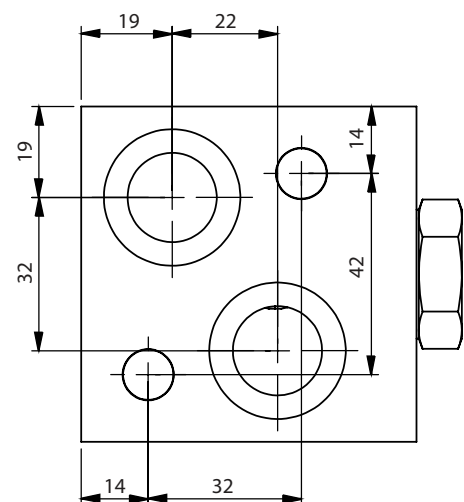
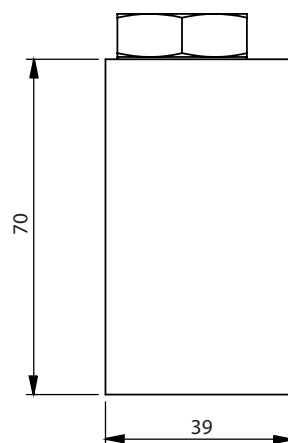
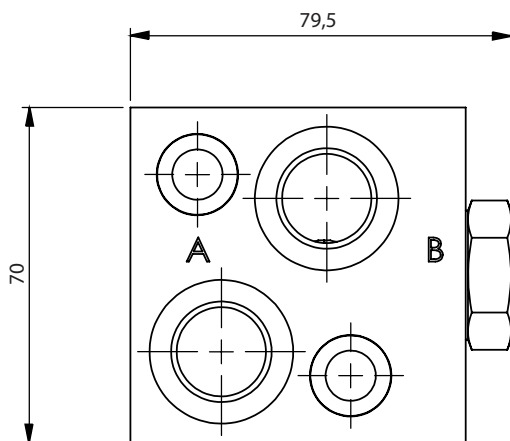
Einbaumaße BVR ... 12

Dimensions BVR ... 12



Einbaumaße BVS ... 12

Dimensions BVS ... 12



Druckbegrenzungsventil in Zwischenplattenbauweise SV- ... -Z ...

Pressure relief valve sandwich design SV- ... -Z ...

Technische Daten

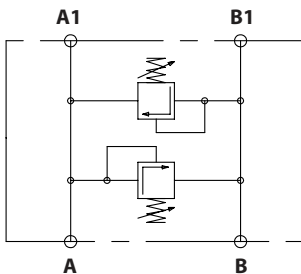
Technical datas

Modell: Flanschbar auf EPM / EPRM, EPMS
 Gehäuse: Guss - GG25
 Max. Betriebsdruck: 250 bar
 Max. Ölstrom: 60 l/min

Model: Flangeable on EPM / EPRM, EPMS
 Housing: Cast iron - GG25
 Max. working pressure: 250 bar
 Max. Oil flow: 60 lpm

Schaltzeichen

Graphic symbol



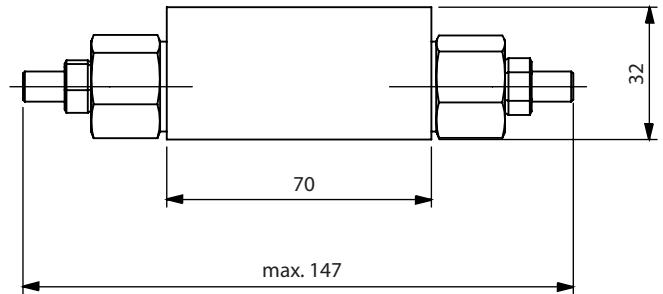
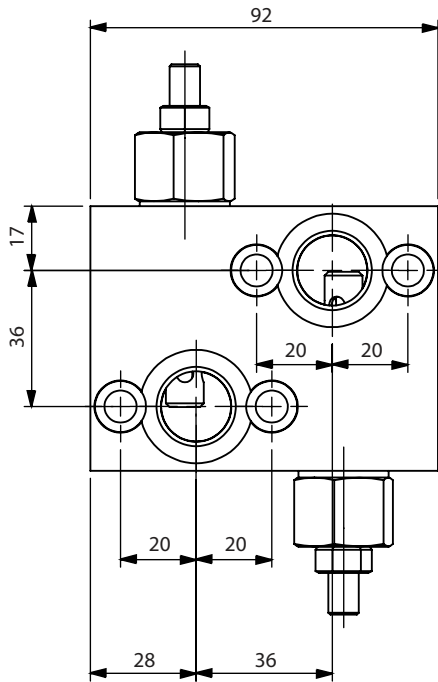
Bestellcode BV

Ordercode BV

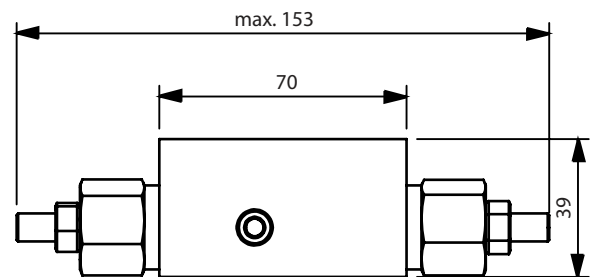
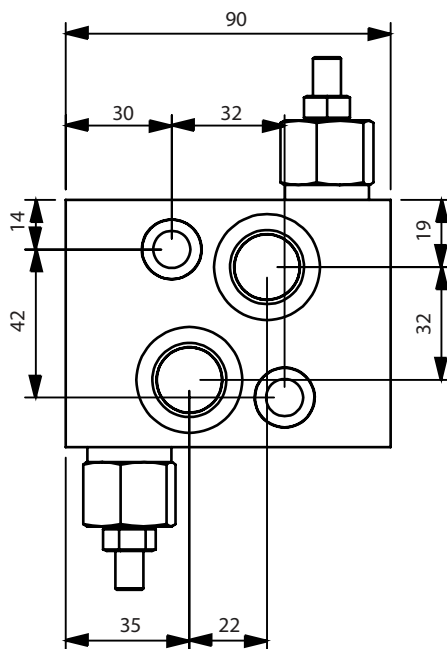


Pos. 1	Flanschbar auf <i>Flangeable on</i>	Pos. 2	Anschlüsse <i>Connections</i>	Pos. 3	Ausführung <i>Design type</i>	Pos. 4	Druckeinstellung <i>Pressure setting</i>
R	EPM /EPRM Motoren <i>EPM /EPRM Motors</i>	G	G 1/2"	E	Einfachwirkend <i>Single-acting</i>	R	120 bar
S	EPMS Motoren <i>EPMS Motors</i>	M	M22x1,5	Z	Doppeltwirkend <i>Double-acting</i>	S	210 bar
		U	7/8-14 UNF				

Einbaumaße SV-R-Z- ...
Dimensions SV-R-Z - ...



Einbaumaße SV-S-Z- ...
Dimensions SV-S-Z - ...



Kombiventil - DBV + Nachsaugrückschlagventil SV+NRV-T

Composite valve - Pressure relief valve + Cavitation valve SV+NRV-T

Technische Daten

Technical datas

Modell: Flanschbar auf EPMT

Gehäuse: Guss - GG25

Max. Betriebsdruck: 210 bar

Anschlüsse: A+B = G3/4"; N = G1/2"

Model: Flangeable on EPMT

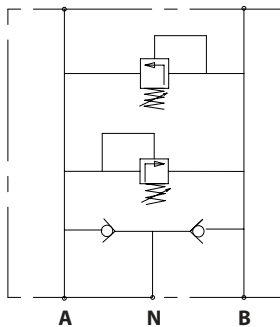
Housing: Cast iron - GG25

Max. working pressure: 210 bar

Connections: A+B = G3/4"; N = G1/2"

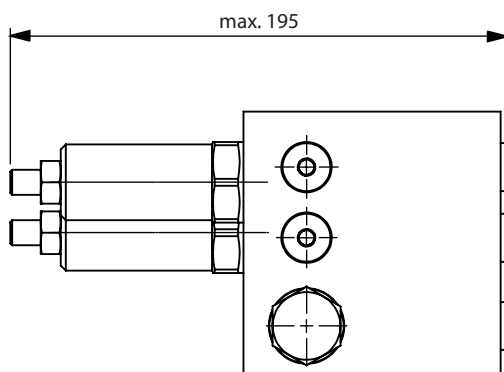
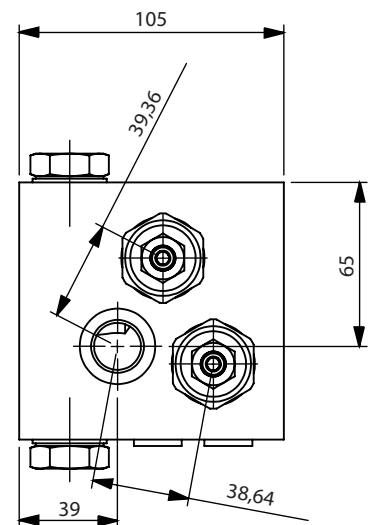
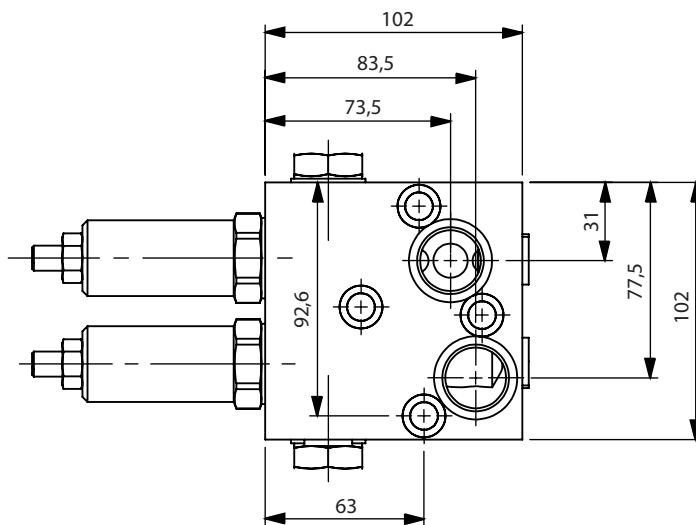
Schaltzeichen

Graphic symbol



Einbaumaße SV+NRV-T

Dimensions SV+NRV-T



3-Wege Stromregelventil 3RD- ...

3-way flow control valve 3RD- ...



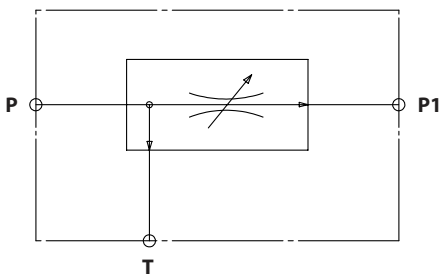
Technische Daten

Technical datas

	3RD-12	3RD-34
Gehäuse <i>Housing</i>	Aluminium	
Einbauart <i>Installation type</i>	Rohrleitung <i>Pipe mounted</i>	
Anschlüsse <i>Connections</i>	G 1/2"	G 3/4"
Betriebsdruck <i>Working pressure</i>	max. 250 bar	
Ölstrom <i>Oil flow</i>	max. 90 lpm	max. 120 lpm
Regelbereich <i>Control range</i>	1 - 65 lpm	3 - 90 lpm

Schaltzeichen

Graphic symbol



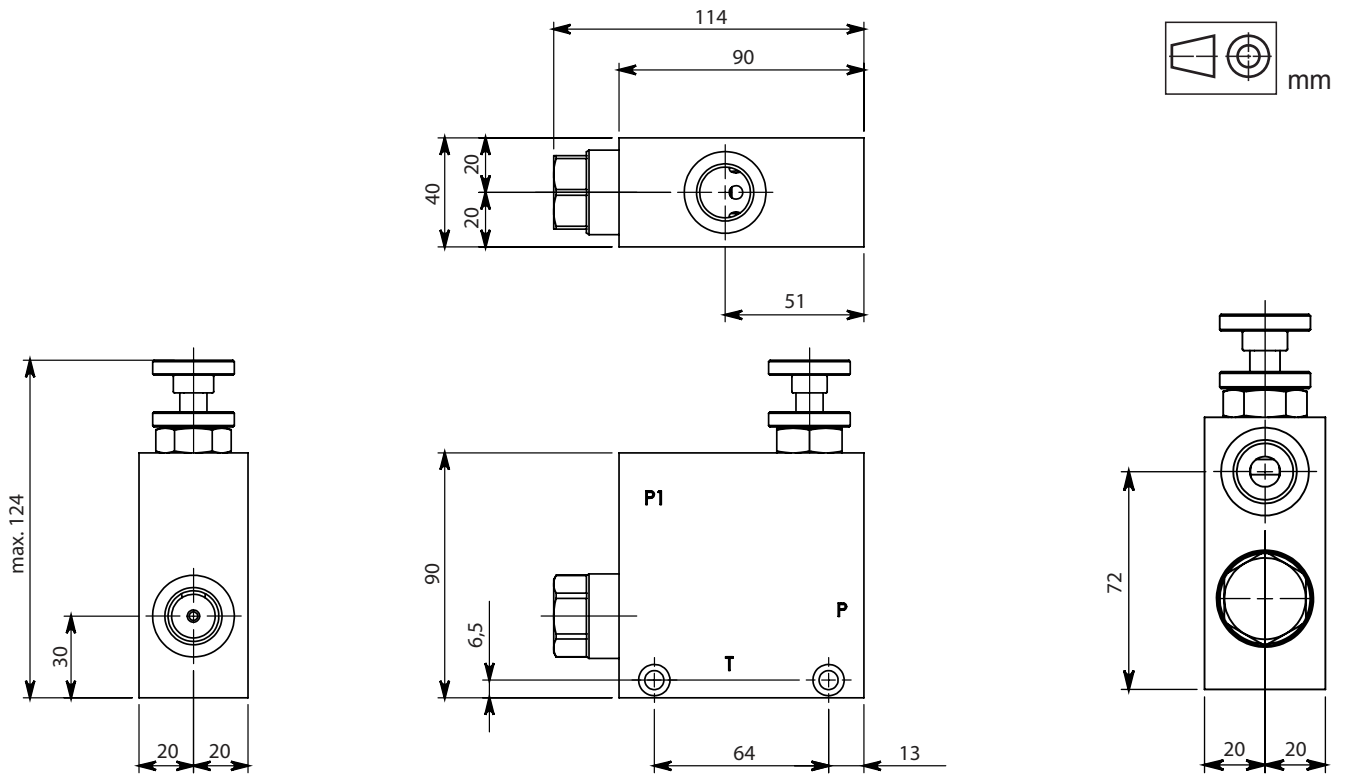
Bestellcode 3RD- ...

Ordercode 3RD- ...

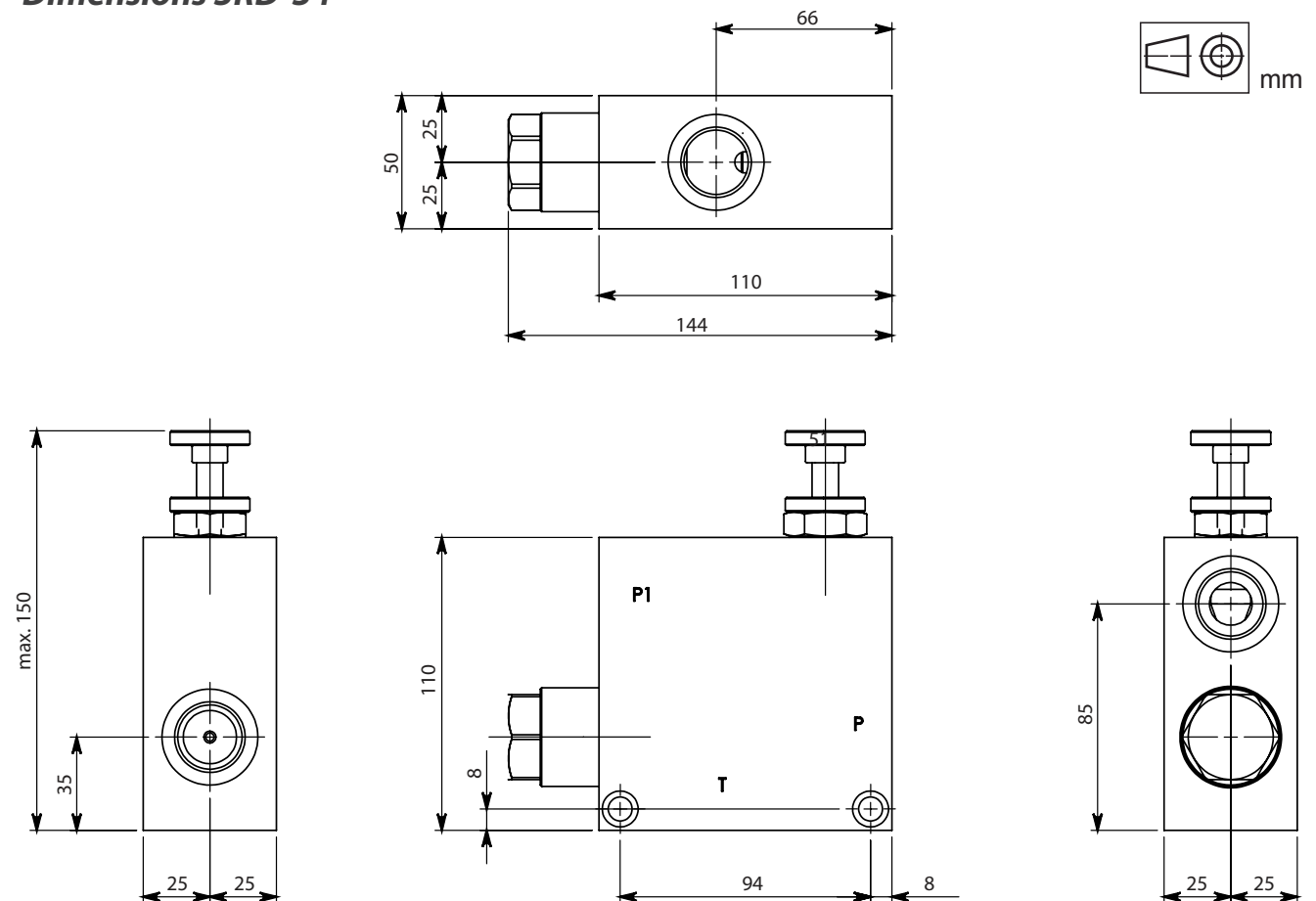


Pos. 1	Anschlüsse <i>Connections</i>
12	G 1/2"
34	G 3/4"

Einbaumaße 3RD-12
Dimensions 3RD-12



Einbaumaße 3RD-34
Dimensions 3RD-34



3-Wege Stromregelventil 3RD- ... + DBV

3-way flow control valve 3RD- ... + DBV



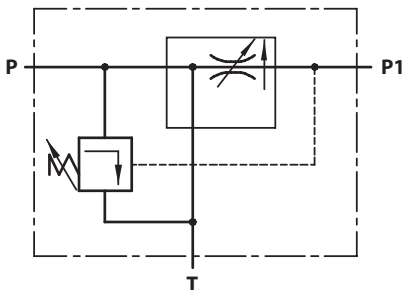
Technische Daten

Technical datas

	3RD-12 ...	3RD-34 ...
Gehäuse <i>Housing</i>	Aluminium	
Einbauart <i>Installation type</i>	Rohrleitung <i>Pipe mounted</i>	
Anschlüsse <i>Connections</i>	G 1/2"	G 3/4"
Betriebsdruck <i>Working pressure</i>	max. 250 bar	
Ölstrom <i>Oil flow</i>	max. 90 lpm	max. 120 lpm
Regelbereich <i>Control range</i>	1 - 65 lpm	3 - 90 lpm

Schaltzeichen

Graphic symbol



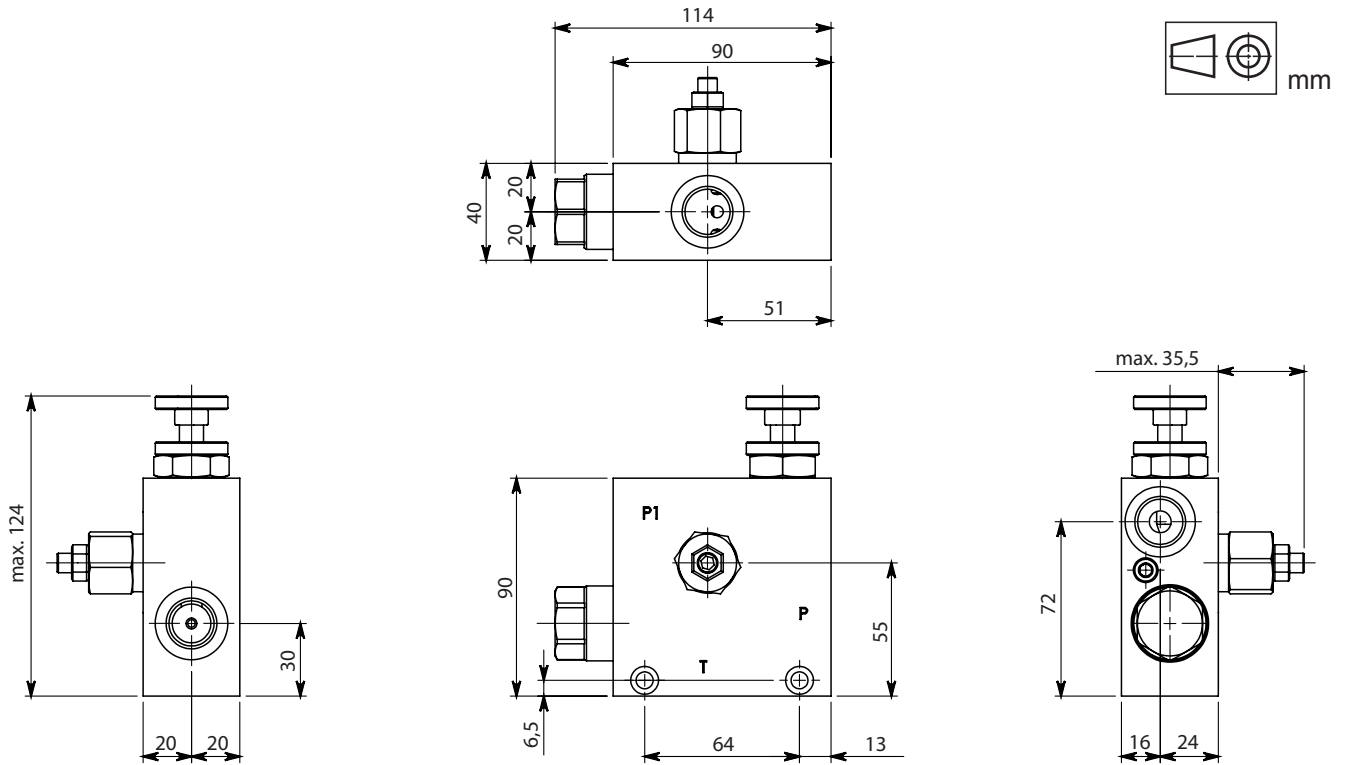
Bestellcode 3RD- ...

Ordercode 3RD- ...

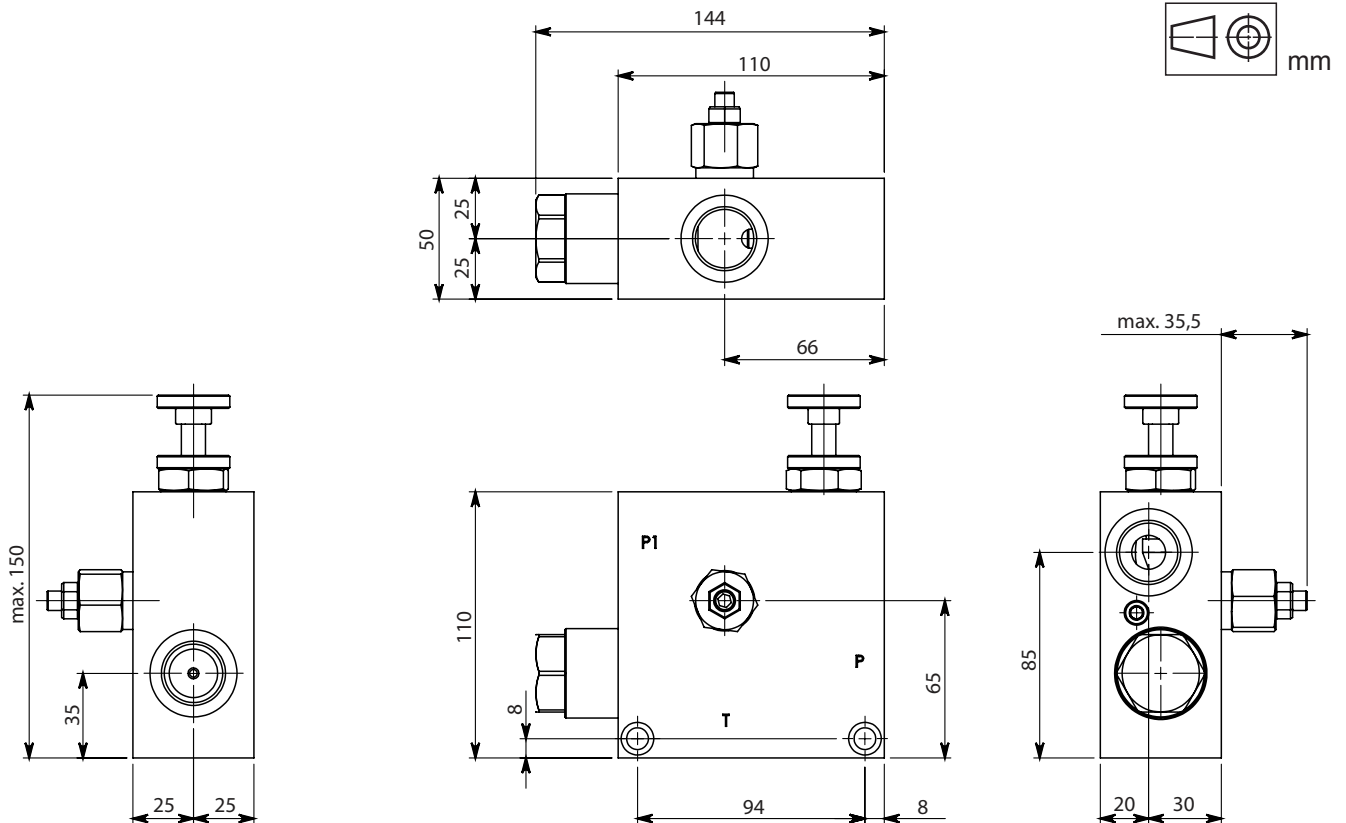


Pos. 1	Anschlüsse <i>Connections</i>
12	G 1/2"
34	G 3/4"

Einbaumaße 3RD-12 + DBV
Dimensions 3RD-12 + DBV



Einbaumaße 3RD-34 + DBV
Dimensions 3RD-34 + DBV



3-Wege Stromregelventil 3RD-34 + DBV + RV

3-way flow control valve 3RD-34 + DBV + RV



Technische Daten

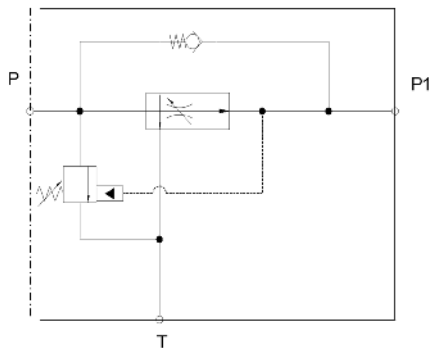
Technical datas

Modell: Rohrleitungseinbau
 Gehäuse: Aluminium
 Max. Betriebsdruck: 250 bar
 Max. Ölstrom: 120 l/min
 Regelbereich: 3 - 90 l/min
 Anschlüsse: G 3/4"

*Model: Pipe mounted
 Housing: Aluminium
 Max. working pressure: 250 bar
 Max. Oil flow: 120 lpm
 Control range: 3 - 90 lpm
 Connections: G 3/4"*

Schaltzeichen

Graphic symbol



Einbaumaße 3RD-34 + DBV

Dimensions 3RD-34 + DBV

